

HAMMOND Plastic ABS Enclosures



MULTIPURPOSE ABS PLASTIC ENCLOSURES

• Flammability rating: UL 94HB For quantities of 50 and up, call for quote.

MOUSER STOCK NO.	Hammond Part No.	Fig.	Dimensions: in.			Price Each			
			L	W	H	1	5	10	25
Black									
546-1591XXASBK	1591XXASBK	A	3.90	2.00	0.80	3.76	3.57	3.38	3.20
546-1591XXBSBK	1591XXBSBK	A	4.40	2.50	1.10	4.06	3.88	3.66	3.45
546-1591XXCSBK	1591XXCSBK	A	4.70	2.60	1.40	4.32	4.10	3.88	3.67
546-1591XXDSBK	1591XXDSBK	A	6.00	3.20	1.80	6.41	6.08	5.76	5.44
546-1591XXESBK	1591XXESBK	A	7.60	4.40	2.20	7.66	7.28	6.89	6.51
546-1591XXFSBK	1591XXFSBK	A	8.70	5.90	2.30	8.64	8.21	7.78	7.34
546-1591XXLSBK	1591XXLSBK	A	3.40	2.20	1.40	4.04	3.84	3.63	3.43
546-1591XXTSBK	1591XXTSBK	A	4.80	3.20	2.20	6.03	5.73	5.43	5.13
Black with Flanged Lid									
546-1591XXASFLBK	1591XXASFLBK	B	3.90	2.00	0.80	3.95	3.75	3.55	3.35
546-1591XXBSFLBK	1591XXBSFLBK	B	4.40	2.50	1.10	4.29	4.10	3.86	3.65
546-1591XXCSFLBK	1591XXCSFLBK	B	4.70	2.60	1.40	4.53	4.30	4.07	3.85
546-1591XXDSFLBK	1591XXDSFLBK	B	6.00	3.20	1.80	6.73	6.39	6.06	5.72
546-1591XXESFLBK	1591XXESFLBK	B	7.60	4.40	2.20	8.08	7.67	7.03	6.66
546-1591XXFSFLBK	1591XXFSFLBK	B	8.70	5.90	2.30	9.47	9.00	8.52	8.05
546-1591XXLSFLBK	1591XXLSFLBK	B	3.40	2.20	1.40	4.05	3.84	3.64	3.44
546-1591XXTSFLBK	1591XXTSFLBK	B	4.80	3.20	2.20	6.34	6.02	5.70	5.39



MULTIPURPOSE FLAME RETARDANT ABS PLASTIC ENCLOSURES

• Flammability rating: UL 94V-0 For quantities of 50 and up, call for quote.

MOUSER STOCK NO.	Hammond Part No.	Fig.	Dimensions: in.			Price Each			
			L	W	H	1	5	10	25
Translucent Blue									
546-1591XXLTBU	1591XXLTBU	A	3.4	2.2	1.4	6.46	6.14	5.81	5.49
546-1591XXATBU	1591XXATBU	A	3.9	2.0	0.8	6.00	5.70	5.40	5.10
546-1591XXBTBU	1591XXBTBU	A	4.4	2.5	1.1	6.53	6.20	5.87	5.55
546-1591XXCTBU	1591XXCTBU	A	4.7	2.6	1.4	6.94	6.59	6.24	5.90
546-1591XXTTBU	1591XXTTBU	A	4.8	3.2	2.2	9.68	9.19	8.71	8.23
546-1591XXDTBU	1591XXDTBU	A	6.0	3.2	1.8	10.24	9.73	9.22	8.71
546-1591XXETBU	1591XXETBU	A	7.6	4.4	2.2	12.29	11.67	11.06	10.45
Black									
546-1591XXABK	1591XXABK	A	3.90	2.00	0.80	6.00	5.70	5.40	5.10
546-1591XXBBK	1591XXBBK	A	4.40	2.50	1.10	6.52	6.20	5.87	5.54
546-1591XXCBK	1591XXCBK	A	4.70	2.60	1.40	6.94	6.38	5.07	4.58
546-1591XXDBK	1591XXDBK	A	6.00	3.20	1.80	10.24	9.73	9.22	8.71
546-1591XXEBK	1591XXEBK	A	7.60	4.40	2.20	12.29	11.67	11.06	10.45
546-1591XXFBK	1591XXFBK	A	8.70	5.90	2.30	12.78	12.14	11.50	10.87
546-1591XXLBK	1591XXLBK	A	3.40	2.20	1.40	6.45	6.13	5.81	5.48
Black with Flanged Lid									
546-1591XXAFLBK	1591XXAFLBK	B	3.90	2.00	0.80	6.31	6.00	5.68	5.37
546-1591XXBFLBK	1591XXBFLBK	B	4.40	2.50	1.10	6.85	6.52	6.19	5.86
546-1591XXCFLBK	1591XXCFLBK	B	4.70	2.60	1.40	7.26	6.90	6.54	6.17
546-1591XXDFLBK	1591XXDFLBK	B	6.00	3.20	1.80	10.75	10.21	9.67	9.13
546-1591XXEFLBK	1591XXEFLBK	B	7.60	4.40	2.20	11.93	11.74	11.55	11.17
546-1591XXFFLBK	1591XXFFLBK	B	8.70	5.90	2.30	13.61	12.93	12.25	11.57
546-1591XXLFLBK	1591XXLFLBK	B	3.40	2.20	1.40	6.80	6.46	6.12	5.78
546-1591XXTFLBK	1591XXTFLBK	B	4.80	3.20	2.20	10.16	9.66	9.15	8.64
Gray									
546-1591XXAGY	1591XXAGY	A	3.90	2.00	0.80	6.01	5.71	5.41	5.11
546-1591XXBGY	1591XXBGY	A	4.40	2.50	1.10	6.52	6.20	5.87	5.54
546-1591XXCGY	1591XXCGY	A	4.70	2.60	1.40	6.94	6.59	6.25	5.90
546-1591XXDGY	1591XXDGY	A	6.00	3.20	1.80	10.24	9.73	9.22	8.71
546-1591XXEGY	1591XXEGY	A	7.60	4.40	2.20	12.29	11.67	11.06	10.45
546-1591XXFGY	1591XXFGY	A	8.70	5.90	2.30	12.78	12.14	11.50	10.87
546-1591XXLGY	1591XXLGY	A	3.40	2.20	1.40	6.45	6.13	5.81	5.48
Gray with Flanged Lid									
546-1591XXAFLGY	1591XXAFLGY	B	3.90	2.00	0.80	6.31	6.00	5.68	5.37
546-1591XXBFLGY	1591XXBFLGY	B	4.40	2.50	1.10	6.85	6.52	6.19	5.86
546-1591XXCFLGY	1591XXCFLGY	B	4.70	2.60	1.40	7.26	6.90	6.54	6.17
546-1591XXDFLGY	1591XXDFLGY	B	6.00	3.20	1.80	10.75	10.21	9.67	9.13
546-1591XXEFLGY	1591XXEFLGY	B	7.60	4.40	2.20	12.56	11.93	11.30	10.67
546-1591XXFFLGY	1591XXFFLGY	B	8.70	5.90	2.30	13.61	12.93	12.25	11.57
546-1591XXLFLGY	1591XXLFLGY	B	3.40	2.20	1.40	6.80	6.46	6.12	5.78
546-1591XXTFLGY	1591XXTFLGY	B	4.80	3.20	2.20	10.16	9.66	9.15	8.64



ABS WALLMOUNT - SNAP TOGETHER ENCLOSURES

• Includes molded in keyhole knockout areas (2) for mounting either horizontally or vertically
• Bottom half includes 6 molded in, PC board standoffs For quantities of 50 and up, call for quote.

MOUSER STOCK NO.	Mfr.	Mfr. Part. No.	Fig.	Enclosure Color	Dimensions: in.			Price Each			
					L	W	H	1	5	10	25
546-1597CGY	C	Gray	C	Gray	4.33	5.50	1.38	12.81	10.69	9.54	8.52
546-1597CBK	C	Black	C	Black	4.33	5.50	1.38	12.81	10.69	9.54	8.52
546-1597D-GY	C	Gray	C	Gray	4.92	7.09	1.38	13.91	11.58	10.42	9.25



ABS ENCLOSURES WITH SCREW FASTENED LID

• Includes machine screws and brass inserts
• Bottom and top half include molded in, PC board standoffs For quantities of 50 and up, call for quote.

MOUSER STOCK NO.	Fig.	Color	L	W	H	1	5	10	25
546-1597X	D	Gray	3.50	5.50	1.80	19.32	16.13	14.39	12.85
546-1597Y	D	Gray	5.30	7.90	2.00	29.99	25.04	22.34	19.94



ABS PLASTIC SNAP TOGETHER ENCLOSURE

For quantities of 50 and up, call for quote.

MOUSER STOCK NO.	Fig.	Color	L	W	H	1	5	10	25
546-1597V	E	Gray	1.60	5.10	1.00	10.68	8.91	7.95	7.10

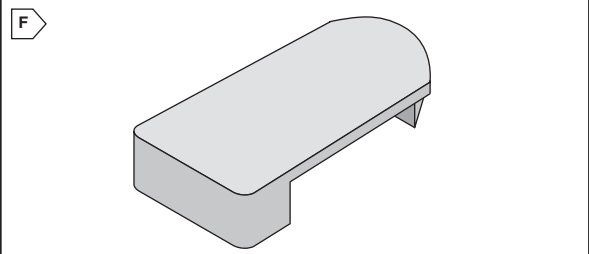
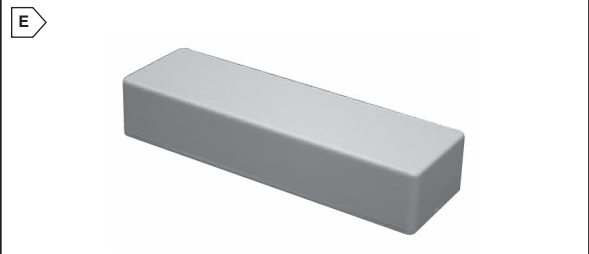
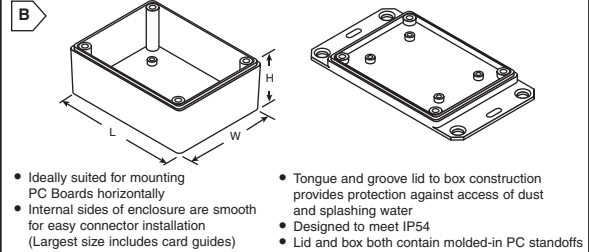
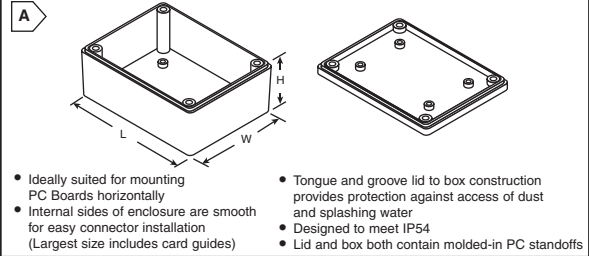


SUPER SHIELD CONDUCTIVE COATING

• Flammability rating: UL 94V-0 For quantities of 50 and up, call for quote.

MOUSER STOCK NO.	MG Chemicals Part No.	Size	Price Each
590-841-340G	841-340G	Aerosol 340g (12oz.)	31.95

DIMENSIONS: in.



BELT OR POCKET CLIP

Nylon clip; includes 2 nylon screws and mounting template For quantities of 50 and up, call for quote.

MOUSER STOCK NO.	Mfr.	Mfr. Part. No.	Fig.	Color	Price Each			
					1	5	10	25
546-1599-CLIP	F	Black	F	Black	1.00	.83	.77	.71
546-1599-CLIPGY	F	Gray	F	Gray	1.00	.83	.77	.71