

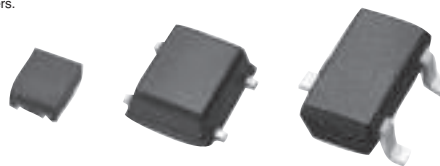
## ALPS HIGH RELIABILITY MAGNETIC SENSOR SWITCHING OUTPUT TYPE

### Applications:

- To detect opening and closing of lids and doors on all kinds of consumer equipment such as mobile phones, notebook PCs and digital camcorders.
- Contributes to increased flexibility in set design through a diverse lineup.
- High reliability achieved through high precision and compactness.
- Low-profile types made possible through magnetic sensing device technologies.

### Features:

- High flexibility in sensitivity design (from high to low sensitivity)
- Compact and low-profile (1.1x0.9x0.55mm for the MAP Type)
- Low current consumption (3.0µA at VDD=1.8V)
- Diverse lineup (functions, operating magnetic field and package specifications)



For quantities of 500 and up, call for quote.

MOUSER STOCK NO.	Alps Part No.	Package Specs	Package Size	Function	Operating Magnetic Field	Drive Voltage	Current Consumption	Price Each			
								1	25	50	100
688-HGDESM021A	HGDESM021A	MAP	1.1x0.9x0.55mm	Single Polarity/Single Output	2.0mT	Typ. 1.8V	3.0µA Ave.	1.50	1.38	1.25	1.00
688-HGDESM031A	HGDESM031A	MAP	1.1x0.9x0.55mm	Single Polarity/Single Output	3.0mT	Typ. 1.8V	3.0µA Ave.	1.50	1.38	1.25	1.00
688-HGDESN021A	HGDESN021A	SON	2.1x2.1x0.75mm	Single Polarity/Single Output	2.0mT	Typ. 1.8V	3.0µA Ave.	1.50	1.38	1.25	1.00
688-HGDESN031A	HGDESN031A	SON	2.1x2.1x0.75mm	Single Polarity/Single Output	3.0mT	Typ. 1.8V	3.0µA Ave.	1.50	1.38	1.25	1.00
688-HGDEST021A	HGDEST021A	SOT23	2.9x2.8x1.1mm	Single Polarity/Single Output	2.0mT	Typ. 1.8V	3.0µA Ave.	1.50	1.38	1.25	1.00
688-HGDEST031A	HGDEST031A	SOT23	2.9x2.8x1.1mm	Single Polarity/Single Output	3.0mT	Typ. 1.8V	3.0µA Ave.	1.50	1.38	1.25	1.00
688-HGDEPM021A	HGDEPM021A	MAP	1.1x0.9x0.55mm	Dual Polarity/Single Output	2.0mT	Typ. 1.8V	3.0µA Ave.	1.59	1.46	1.33	1.06
688-HGDEPM031A	HGDEPM031A	MAP	1.1x0.9x0.55mm	Dual Polarity/Single Output	3.0mT	Typ. 1.8V	3.0µA Ave.	1.59	1.46	1.33	1.06
688-HGDEPN021A	HGDEPN021A	SON	2.1x2.1x0.75mm	Dual Polarity/Single Output	2.0mT	Typ. 1.8V	3.0µA Ave.	1.59	1.46	1.33	1.06
688-HGDEPN031A	HGDEPN031A	SON	2.1x2.1x0.75mm	Dual Polarity/Single Output	3.0mT	Typ. 1.8V	3.0µA Ave.	1.59	1.46	1.33	1.06
688-HGDEPT021A	HGDEPT021A	SOT23	2.9x2.8x1.1mm	Dual Polarity/Single Output	2.0mT	Typ. 1.8V	3.0µA Ave.	1.59	1.46	1.33	1.06
688-HGDEPT031A	HGDEPT031A	SOT23	2.9x2.8x1.1mm	Dual Polarity/Single Output	3.0mT	Typ. 1.8V	3.0µA Ave.	1.59	1.46	1.33	1.06
688-HGDEDM021A	HGDEDM021A	MAP	1.1x0.9x0.55mm	Dual Polarity/Dual Output	2.0mT	Typ. 1.8V	3.0µA Ave.	1.95	1.79	1.63	1.30
688-HGDEDM031A	HGDEDM031A	MAP	1.1x0.9x0.55mm	Dual Polarity/Dual Output	3.0mT	Typ. 1.8V	3.0µA Ave.	1.95	1.79	1.63	1.30
688-HGDEDN021A	HGDEDN021A	SON	2.1x2.1x0.75mm	Dual Polarity/Dual Output	2.0mT	Typ. 1.8V	3.0µA Ave.	1.95	1.79	1.63	1.30
688-HGDEDN031A	HGDEDN031A	SON	2.1x2.1x0.75mm	Dual Polarity/Dual Output	3.0mT	Typ. 1.8V	3.0µA Ave.	1.95	1.79	1.63	1.30

## ALPS RDC10 SERIES LINEAR SENSORS

### Specifications:

- Light operating force (250gF)
- Operating life: 100,000 cycles
- Total resistance: 10KW ±30%
- Linearity: ±0.5%
- Rated voltage: 5 VDC

### Applications:

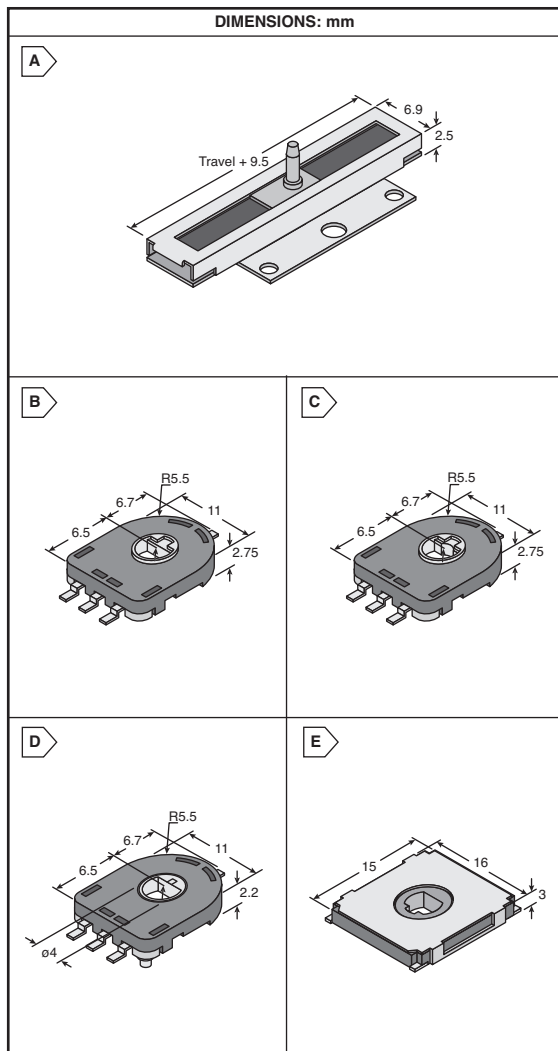
- Detection of feedback from motor drive units in cameras and CD/MD changers
- Detection of paper size in photo copiers, printers, and projectors

### Features:

- High precision linearity

For quantities of 500 and up, call for quote.

MOUSER STOCK NO.	Alps Part No.	Fig.	Travel	Length of Lever	Price Each			
					1	25	50	100
688-RDC1014A09	RDC1014A09	A	14mm	4.5mm	2.96	2.47	2.22	1.97
688-RDC1022A05	RDC1022A05	A	22mm	4.5mm	2.96	2.47	2.22	1.97
688-RDC10320RB	RDC10320RB	A	32mm	4.5mm	3.66	3.05	2.75	2.44



Alps Motion/Position Sensors

## ALPS RDC50 SERIES ROTARY POSITION SENSORS

### Specifications:

- Operating life: 1,000,000 cycles
- Total resistance: 10KW ±30%
- Rated voltage: 5 VDC
- Linearity: ±2%
- Effective variable range: 320°

### Applications:

- Rotation detecting sensors in projectors, digital cameras, air conditioners
- Joint angle detection in robots

### Features:

- Analog output facilitates signal processing

Model w/ optional gear: Gear provided w/ product and is delivered unmounted.

For quantities greater than listed, call for quote.

MOUSER STOCK NO.	Alps Part No.	Fig.	Hollow Shaft Variation	Optional Gear	Price Each					
					1	25	50	100	500	1000
688-RDC503013A	RDC503013A	B	ø3.5 mm	No	2.18	1.82	1.63	1.45	1.31	1.16
688-RDC503015A	RDC503015A	C	ø3.5 mm w/ radius	Yes	2.18	1.82	1.63	1.45	1.31	1.16
688-RDC506002A	RDC506002A	D	ø4 mm	No	2.60	2.16	1.95	1.73	1.56	1.38

## ALPS RDC80 SERIES 15MM ROTARY POSITION SENSORS

### Specifications:

- Operating life: 100,000 cycles
- Total resistance: 10KW ±30%
- Rated voltage: 5 VDC
- Linearity: ±3% (absolute)

### Applications:

- Detection of rotation angles
- Control of home appliances

### Features:

- Entire 360 degrees covered due to use of 2-phase output

For quantities greater than listed, call for quote.

MOUSER STOCK NO.	Alps Part No.	Fig.	Effective Variable Range		Price Each					
			Phase 1	Phase 2	1	25	50	100	500	1000
688-RDC803001A	RDC803001A	E	330°	360°	1.82	1.52	1.37	1.21	1.09	.97