

# FAIRCHILD LED Drivers and Optocouplers



RoHS Compliant This product is RoHS compliant.

## LED DRIVERS

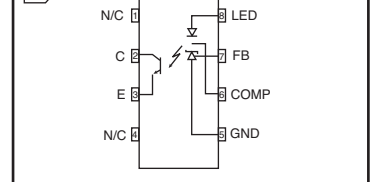
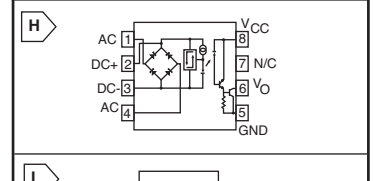
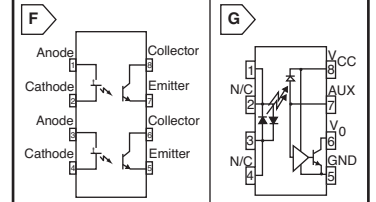
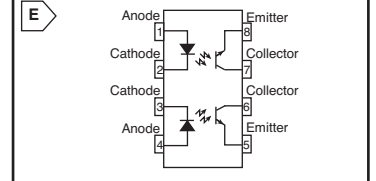
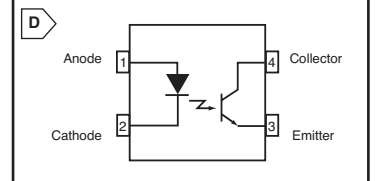
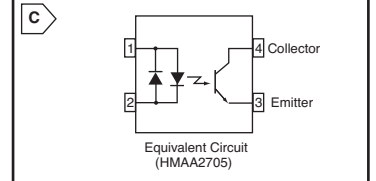
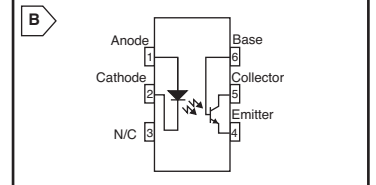
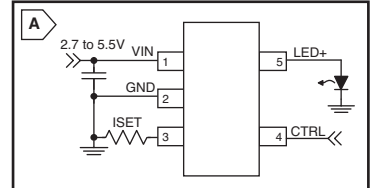
PRODUCT **NEW**

MOUSER STOCK NO.	Fairchild Part No.	Fig.	Package	Number of LEDs	Input Voltage	Ground Current	LED On Option	Brightness Control	Driver Only	LED Driving Current (max)	Serial Driver	Price Each			
												1	25	100	250
512-FAN5608DHMPX	FAN5608DHMPX	-	MLP-12	12	2.7-5 V	0.1mA	-	Analog, PWM, Digital	No	20mA	Yes	1.25	1.00	.75	.741
512-FAN5646S700X	FAN5646S700X	A	SC70-5	1	2.7-5 V	0.05mA	00	Digital	Yes	20mA	No	.96	.72	.54	.40
512-FAN5646S701X	FAN5646S701X	A	SC70-5	1	2.7-5 V	0.05mA	01	Digital	Yes	20mA	No	.96	.72	.54	.40
512-FAN5646UC00X	FAN5646UC00X	-	WL-CSP	1	2.7-5 V	0.05mA	00	Digital	Yes	20mA	No	.96	.72	.54	.40
512-FAN5646UC01X	FAN5646UC01X	-	WL-CSP	1	2.7-5 V	0.05mA	01	Digital	Yes	20mA	No	.96	.72	.54	.40

\*UL Recognized ♦ Surface Mount Device

## PHOTOTRANSISTOR OUTPUT, DC SENSING

MOUSER STOCK NO.	Fairchild Part No.	Fig.	Package	Isolation Voltage (VRMS)	BV CEO	Typical Rise/Fall (μSEC)	Price Each		
							1	100	250
512-4N25M	4N25M	B	6-Pin DIP	7.5kV	70V	2	.40	.285	.207
♦ * 512-4N25SM	4N25SM	B	SO-6	7.5kV	100V	2	.40	.285	.204
* 512-4N26M	4N26M	B	DIP-6	7.5kV	100V	2	.40	.285	.204
* 512-4N33M	4N33M	B	DIP-6	7.5kV	60V	5/100	.44	.323	.223
* 512-4N35M	4N35M	B	DIP-6	7.5kV	100V	2	.43	.304	.219
♦ * 512-4N35SR2M	4N35SR2M	B	DIP-6	7.5kV	100V	2	.35	.259	.199
512-4N37M	4N37M	B	6-Pin DIP	7.5kV	70V	2	.43	.29	.218
512-CNY173M	CNY173M	B	6-Pin DIP	7.5kV	70V	2	.41	.295	.247
512-FOD814	FOD814	C	DIP-4	5.0kV	70V	4/3	.40	.302	.211
512-FOD814A	FOD814A	C	DIP-4	5.0kV	70V	4/3	.40	.266	.191
* 512-FOD817	FOD817	D	DIP-4	5.0kV	70V	4/3	.28	.209	.152
* 512-FOD817A	FOD817A	D	DIP-4	5.0kV	70V	4/3	.28	.209	.152
512-FOD817A3SD	FOD817A3SD	D	SMD-4	5.0kV	70V	4/3	.34	.247	.18
* 512-FOD817AS	FOD817AS	D	DIP-4	5.0kV	70V	4/3	.28	.209	.152
512-FOD817B	FOD817B	D	DIP-4	5.0kV	70V	4/3	.28	.209	.152
* 512-FOD817C	FOD817C	D	DIP-4	5.0kV	70V	4/3	.28	.209	.152
♦ * 512-FOD817C3SD	FOD817C3SD	D	SMDIP-4	5.0kV	70V	4/3	.34	.247	.18
♦ * 512-FOD817CS	FOD817CS	D	SMDIP-4	5.0kV	70V	4/3	.28	.209	.152
* 512-FOD817D	FOD817D	D	DIP-4	5.0kV	70V	4/3	.28	.209	.152
* 512-FOD817SD	FOD817SD	D	DIP-4	5.0kV	70V	4/3	.34	.247	.18
512-FOD817DSD	FOD817DSD	D	DIP-4	5.0kV	70V	4/3	.34	.247	.18
♦ * 512-FODM124R2	FODM124R2	D	MFP-4	3.75kV	80V	3	.43	.302	.217
512-HMHA2801	HMHA2801	D	4-PIN Full Pitch MFP	2.5kV	80V	3	.40	.285	.204
512-HMHA281	HMHA281	D	4-PIN Half Pitch MFP	2.5kV	80V	3	.31	.257	.238
* 512-MOC207M	MOC207M	E	SO-8	2.5kV	70V	3.2/4.7	.53	.383	.337



## DUAL CHANNEL PHOTOTRANSISTOR OUTPUT, DC SENSING

MOUSER STOCK NO.	Fairchild Part No.	Fig.	Package	Isolation Voltage (VRMS)	BV CEO	Typical Rise/Fall (μSEC)	Price Each		
							1	100	250
* 512-MCT6	MCT6	E	DIP-8	5.0kV	30V	5/25	.71	.402	.297
512-MCT61	MCT61	E	DIP-8	5.0kV	30V	5/25	.71	.402	.297
* 512-MCT62	MCT62	E	DIP-8	5.0kV	30V	5/25	.75	.428	.316
♦ * 512-MCT62S	MCT62S	E	SMD-8	5.0kV	30V	5/25	.75	.527	.418
♦ * 512-MCT6S	MCT6S	E	SMD-8	5.0kV	30V	5/25	.71	.523	.438
512-MCT9001	MCT9001	F	DIP-8	2.5kV	30V	5/25	.75	.428	.316
♦ * 512-MOCD207M	MOCD207M	F	SOIC-8	2.5kV	70V	1.6/2.2	.86	.602	.535
♦ * 512-MOCD213M	MOCD213M	F	SO-8	2.5kV	70V	1.6/2.2	.90	.74	.628
* 512-MOCD217M	MOCD217M	F	SO-8	2.5kV	30V	3.2/4.7	.75	.502	.377

## HIGH VOLTAGE PHOTODARLINGTON OUTPUT, DC SENSING

MOUSER STOCK NO.	Fairchild Part No.	Fig.	Package	Isolation Voltage (VRMS)	BV CEO	Typical Rise/Fall (μSEC)	Price Each		
							1	100	250
* 512-FOD852	FOD852	D	DIP-4	5.0kV	300V	100/20	.48	.363	.268
* 512-H11G2M	H11G2M	B	DIP-6	7.5kV	80V	5/100	.66	.375	.281
♦ * 512-MOCD223M	MOCD223M	F	SOIC-8	2.5kV	80V	1.0/2.0	.88	.59	.447

## AC/DC TO LOGIC INTERFACE, AC SENSING

MOUSER STOCK NO.	Fairchild Part No.	Fig.	Package	Isolation Voltage (VRMS)	BV CEO	Typical Rise/Fall (μSEC)	Price Each		
							1	100	250
* 512-MID400	MID400	G	DIP-8	2.5kV	5.5V	1.0/1.0	2.91	2.09	1.86
* 512-HCPL-3700	HCPL-3700	H	DIP-8	2.5kV	4.4V	0.4	2.17	1.29	1.20

## PHOTOTRANSISTOR OUTPUT, AC SENSING

MOUSER STOCK NO.	Fairchild Part No.	Fig.	Package	Isolation Voltage (VRMS)	BV CEO	Typical Rise/Fall (μSEC)	Price Each		
							1	100	250
512-H11AA1M	H11AA1M	B	DIP-6	7.5kV	30V	2	.74	.466	.39
512-H11AA4M	H11AA4M	B	DIP-6	7.5kV	30V	2	.78	.485	.409
♦ 512-HMHA280	HMHA280	C	4-Pin Full Pitch MFP	2.5kV	80V	3	.36	.295	.276

## ISOLATED ERROR AMPLIFIERS

MOUSER STOCK NO.	Fairchild Part No.	Fig.	Package	Isolation Voltage (Viso)	BV CEO	VREF (MAX)	Price Each		
							1	100	250
♦ 512-FOD2712	FOD2712	I	SOIC-8	2.5kV	70V	1.259V	.67	.541	.528
512-FOD271A	FOD271A	I	DIP-8	5.0kV	70V	2.508V	1.40	1.02	.74
512-FOD271B	FOD271B	I	DIP-8	5.0kV	70V	2.520V	.67	.541	.528
512-FOD2742A	FOD2742A	I	SO-8	2.5kV	70V	2.482V	1.32	.961	.69
512-FOD2742B	FOD2742B	I	SO-8	2.5kV	70V	2.520V	1.00	.73	.53

