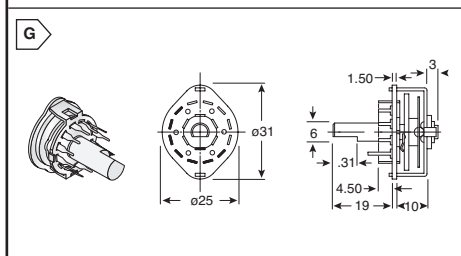
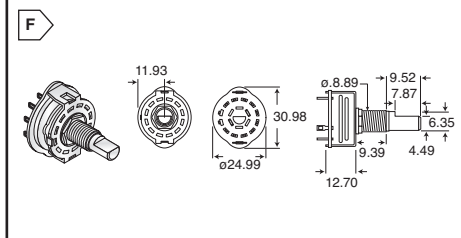
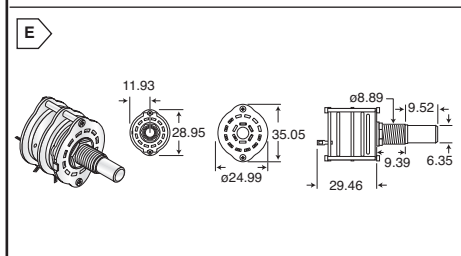
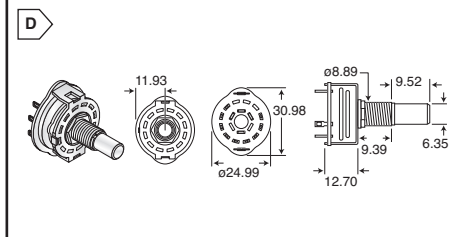
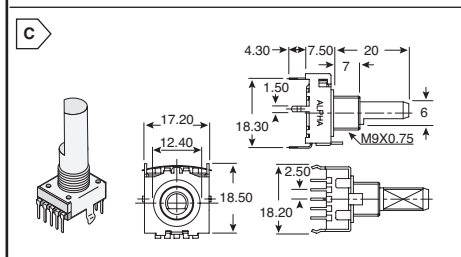
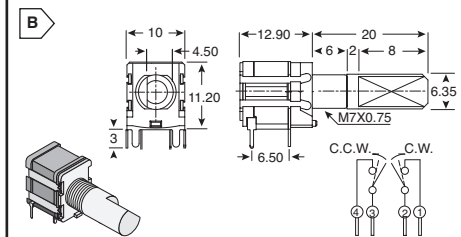
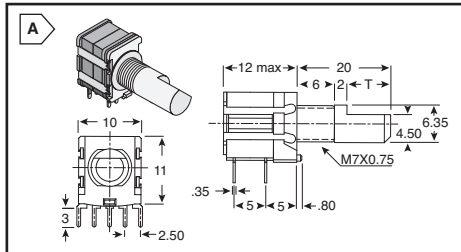


# ALPHA Rotary Switches



RoHS Compliant

DIMENSIONS: mm



© Copyright 2010 Mouser Electronics

## SR10010F SERIES

This product is RoHS compliant.

- Rating: 0.1A/16VDC
- Contact Resistance: 50mΩ max.
- Insulation Resistance: 100VDC-100MΩ min.
- Dielectric Strength: 100VAC for 1 minute
- Operating Life: 10000 cycles
- Shaft Type: 6.35mm D
- Timing: Non-shorting
- Terminals: PC mount

For quantities of 2000 and up, call for quote.

| MOUSER STOCK NO.  | Alpha Part No.           | Fig. | Poles | Positions | Shaft Length | Price Each |      |      |      |      |
|-------------------|--------------------------|------|-------|-----------|--------------|------------|------|------|------|------|
|                   |                          |      |       |           |              | 1          | 50   | 100  | 500  | 1000 |
| 105-SR10010F-16NS | SR10010F-0106-20F0B-C7-N | A    | 1     | 6         | 20mm         | 5.86       | 5.33 | 4.84 | 4.40 | 4.00 |
| 105-SR10010F-23NS | SR10010F-0203-20F0B-C7-N | A    | 2     | 3         | 20mm         | 5.86       | 5.33 | 4.84 | 4.40 | 4.00 |
| 105-SR10010F-24NS | SR10010F-0204-20F0B-C7-N | A    | 2     | 4         | 20mm         | 5.86       | 5.33 | 4.84 | 4.40 | 4.00 |
| 105-SR10010F-25NS | SR10010F-0205-20F0B-C7-N | A    | 2     | 5         | 20mm         | 5.86       | 5.33 | 4.84 | 4.40 | 4.00 |

## SR10030F SERIES

- Rating: 0.1A/16VDC
- Contact Resistance (initial performance/after lifetime): 50mΩ max./150mΩ max.
- Shaft Type: 6.35mm D
- Terminal: PC mount
- Rotational Torque: 153 ± 71gf.cm
- Mechanical Life: 30000 cycles
- Electrical Life: 10000 cycles
- Pulse Switch Operation: C.W.: 1 & 2 on during change over C.C.W.: 3 & 4 on during change over

RoHS Compliant

For quantities of 2000 and up, call for quote.

| MOUSER STOCK NO. | Alpha Part No.    | Fig. | Shaft Length | Price Each |      |      |      |      |
|------------------|-------------------|------|--------------|------------|------|------|------|------|
|                  |                   |      |              | 1          | 50   | 100  | 500  | 1000 |
| 105-SR10030F-PS  | SR10030F-20F0B-C7 | B    | 20mm         | 6.40       | 5.82 | 5.29 | 4.81 | 4.37 |

## SR1712F SERIES

- Rating: 0.3A/16VDC
- Contact Resistance: 50mΩ max.
- Insulation Resistance: 100VDC-100MΩ min.
- Dielectric Strength: 100VAC for 1 minute
- Operating Life: 10000 cycles
- Shaft Type: 6mm D
- Timing: Non-shorting
- Terminals: PC mount

RoHS Compliant

For quantities of 2000 and up, call for quote.

| MOUSER STOCK NO. | Alpha Part No.          | Fig. | Poles | Positions | Shaft Length | Price Each |      |      |      |      |
|------------------|-------------------------|------|-------|-----------|--------------|------------|------|------|------|------|
|                  |                         |      |       |           |              | 1          | 50   | 100  | 500  | 1000 |
| 105-SR1712F-16NS | SR1712F-0106-20F0A-N9-9 | C    | 1     | 6         | 20mm         | 4.54       | 3.78 | 3.44 | 3.13 | 2.88 |
| 105-SR1712F-18NS | SR1712F-0108-20F0A-N9-9 | C    | 1     | 8         | 20mm         | 4.54       | 3.78 | 3.44 | 3.13 | 2.88 |
| 105-SR1712F-22NS | SR1712F-0202-20F0A-N9-9 | C    | 2     | 2         | 20mm         | 4.54       | 3.78 | 3.44 | 3.13 | 2.88 |
| 105-SR1712F-23NS | SR1712F-0203-20F0A-N9-9 | C    | 2     | 3         | 20mm         | 4.54       | 3.78 | 3.44 | 3.13 | 2.88 |
| 105-SR1712F-24NS | SR1712F-0204-20F0A-N9-9 | C    | 2     | 4         | 20mm         | 4.54       | 3.78 | 3.44 | 3.13 | 2.88 |

## SR2511F, SR2512F, AND SR2513F SERIES

- Rating: 0.3A/125VAC
- Contact Resistance: 50mΩ max.
- Insulation Resistance: 500VDC-100MΩ min.
- Dielectric Strength: 500VAC for 1 minute
- Rotational Torque: 1.0 ± 0.5Kg/cm

RoHS Compliant

For quantities of 2000 and up, call for quote.

| MOUSER STOCK NO.   | Alpha Part No.            | Fig. | Poles | Positions | Shaft Length | Price Each |      |      |      |      |
|--|---------------------------|------|-------|-----------|--------------|------------|------|------|------|------|
|  |                           |      |       |           |              | 1          | 50   | 100  | 500  | 1000 |
| <b>Non-Shorting Round Shaft with Solder Terminals</b>      |                           |      |       |           |              |            |      |      |      |      |
| 105-SR2511F-25NS   | SR2511F-0205-19R0B-E9-N-W | D    | 2     | 5         | 19mm         | 2.77       | 2.32 | 2.11 | 1.92 | 1.76 |
| 105-SR2511F-26RN   | SR2511F-0206-19R0B-E9-N-W | D    | 2     | 6         | 19mm         | 2.77       | 2.32 | 2.11 | 1.92 | 1.76 |
| 105-SR2511F-34NS   | SR2511F-0304-19R0B-E9-N-W | D    | 3     | 4         | 19mm         | 2.77       | 2.32 | 2.11 | 1.92 | 1.76 |
| 105-SR2511F-43RN   | SR2511F-0403-19R0B-E9-N-W | D    | 4     | 3         | 19mm         | 2.77       | 2.32 | 2.11 | 1.92 | 1.76 |
| 105-SR2511F-62RN   | SR2511F-0602-19R0B-E9-N-W | D    | 6     | 2         | 19mm         | 2.77       | 2.32 | 2.11 | 1.92 | 1.76 |
| 105-SR2511F-12RN   | SR2511F-0112-19R0B-E9-N-W | D    | 1     | 12        | 19mm         | 2.77       | 2.32 | 2.11 | 1.92 | 1.76 |
| <b>Non-Shorting Round Shaft with PCB Pins</b>              |                           |      |       |           |              |            |      |      |      |      |
| 105-SR2512F-18NS   | SR2512F-0108-19R0B-E9-N-W | D    | 1     | 8         | 19mm         | 2.77       | 2.32 | 2.11 | 1.92 | 1.76 |
| 105-SR2512F-25NS   | SR2512F-0205-19R0B-E9-N-W | D    | 2     | 5         | 19mm         | 2.77       | 2.32 | 2.11 | 1.92 | 1.76 |
| 105-SR2512F-26NS   | SR2512F-0206-19R0B-E9-N-W | D    | 2     | 6         | 19mm         | 2.77       | 2.32 | 2.11 | 1.92 | 1.76 |
| 105-SR2512F-34NS   | SR2512F-0304-19R0B-E9-N-W | D    | 3     | 4         | 19mm         | 2.77       | 2.32 | 2.11 | 1.92 | 1.76 |
| 105-SR2512F-43NS   | SR2512F-0403-19R0B-E9-N-W | D    | 4     | 3         | 19mm         | 2.77       | 2.32 | 2.11 | 1.92 | 1.76 |
| 105-SR2512F-62NS   | SR2512F-0602-19R0B-E9-N-W | D    | 6     | 2         | 19mm         | 2.77       | 2.32 | 2.11 | 1.92 | 1.76 |
| 105-SR2512F-110NS  | SR2512F-0110-19R0B-E9-N-W | D    | 1     | 10        | 19mm         | 2.77       | 2.32 | 2.11 | 1.92 | 1.76 |
| 105-SR2512F-112NS  | SR2512F-0112-19R0B-E9-N-W | D    | 1     | 12        | 19mm         | 2.77       | 2.32 | 2.11 | 1.92 | 1.76 |
| <b>Shorting Round Shaft with Solder Terminals</b>          |                           |      |       |           |              |            |      |      |      |      |
| 105-SR2511F-17S  | SR2511F-0107-19R0B-E9-S-W | D    | 1     | 7         | 19mm         | 2.77       | 2.32 | 2.11 | 1.92 | 1.76 |
| 105-SR2511F-19S  | SR2511F-0109-19R0B-E9-S-W | D    | 1     | 9         | 19mm         | 2.77       | 2.32 | 2.11 | 1.92 | 1.76 |
| 105-SR2511F-25S  | SR2511F-0205-19R0B-E9-S-W | D    | 2     | 5         | 19mm         | 2.77       | 2.32 | 2.11 | 1.92 | 1.76 |
| 105-SR2511F-26S  | SR2511F-0206-19R0B-E9-S-W | D    | 2     | 6         | 19mm         | 2.77       | 2.32 | 2.11 | 1.92 | 1.76 |
| 105-SR2511F-33S  | SR2511F-0303-19R0B-E9-S-W | D    | 3     | 3         | 19mm         | 2.77       | 2.32 | 2.11 | 1.92 | 1.76 |
| 105-SR2511F-34S  | SR2511F-0304-19R0B-E9-S-W | D    | 3     | 4         | 19mm         | 2.77       | 2.32 | 2.11 | 1.92 | 1.76 |
| 105-SR2511F-42S  | SR2511F-0402-19R0B-E9-S-W | D    | 4     | 2         | 19mm         | 2.77       | 2.32 | 2.11 | 1.92 | 1.76 |
| 105-SR2511F-43S  | SR2511F-0403-19R0B-E9-S-W | D    | 4     | 3         | 19mm         | 2.77       | 2.32 | 2.11 | 1.92 | 1.76 |
| 105-SR2511F-62S  | SR2511F-0602-19R0B-E9-S-W | D    | 6     | 2         | 19mm         | 2.77       | 2.32 | 2.11 | 1.92 | 1.76 |
| 105-SR2511F-12S  | SR2511F-0112-19R0B-E9-S-W | D    | 1     | 12        | 19mm         | 2.77       | 2.32 | 2.11 | 1.92 | 1.76 |
| <b>Shorting Round Shaft with Solder Terminals; 2 Decks</b> |                           |      |       |           |              |            |      |      |      |      |
| 105-SR2921F-17S  | SR2921F-0107-19R0B-E9-S-W | E    | 1     | 7         | 19mm         | 4.40       | 3.67 | 3.34 | 3.04 | 2.80 |
| 105-SR2921F-12S  | SR2921F-0112-19R0B-E9-S-W | E    | 1     | 12        | 19mm         | 4.40       | 3.67 | 3.34 | 3.04 | 2.80 |
| 105-SR2921F-25S  | SR2921F-0205-19R0B-E9-S-W | E    | 2     | 5         | 19mm         | 4.40       | 3.67 | 3.34 | 3.04 | 2.80 |
| 105-SR2921F-26S  | SR2921F-0206-19R0B-E9-S-W | E    | 2     | 6         | 19mm         | 4.40       | 3.67 | 3.34 | 3.04 | 2.80 |
| 105-SR2921F-34S  | SR2921F-0304-19R0B-E9-S-W | E    | 3     | 4         | 19mm         | 4.40       | 3.67 | 3.34 | 3.04 | 2.80 |
| <b>Non-Shorting D-Shaft with Solder Terminals</b>          |                           |      |       |           |              |            |      |      |      |      |
| 105-SR2511F-25FN   | SR2511F-0205-19F0B-E9-N-W | F    | 2     | 5         | 19mm         | 2.77       | 2.32 | 2.11 | 1.92 | 1.76 |
| 105-SR2511F-26FN   | SR2511F-0206-19F0B-E9-N-W | F    | 2     | 6         | 19mm         | 2.77       | 2.32 | 2.11 | 1.92 | 1.76 |
| 105-SR2511F-34FN   | SR2511F-0304-19F0B-E9-N-W | F    | 3     | 4         | 19mm         | 2.77       | 2.32 | 2.11 | 1.92 | 1.76 |
| 105-SR2511F-43FN   | SR2511F-0403-19F0B-E9-N-W | F    | 4     | 3         | 19mm         | 2.77       | 2.32 | 2.11 | 1.92 | 1.76 |
| 105-SR2511F-62FN   | SR2511F-0602-19F0B-E9-N-W | F    | 6     | 2         | 19mm         | 2.77       | 2.32 | 2.11 | 1.92 | 1.76 |
| 105-SR2511F-12FN   | SR2511F-0112-19F0B-E9-N-W | F    | 1     | 12        | 19mm         | 2.77       | 2.32 | 2.11 | 1.92 | 1.76 |

## SR2513F SERIES

- Rating: 0.3A/125VAC
- Contact Resistance: 50mΩ max.
- Insulation Resistance: 500VDC-100MΩ min.
- Dielectric Strength: 500VAC for 1 minute
- Rotational Torque: 1.0 ± 0.5Kg/cm
- Shaft Type: 6mm D
- Timing: Non-shorting
- Terminals: PC mount

RoHS Compliant

For quantities of 2000 and up, call for quote.

| MOUSER STOCK NO.  | Alpha Part No.         | Fig. | Poles | Positions | Shaft Length | Price Each |      |      |      |      |
|-------------------|------------------------|------|-------|-----------|--------------|------------|------|------|------|------|
|                   |                        |      |       |           |              | 1          | 50   | 100  | 500  | 1000 |
| 105-SR2513F-110NS | SR2513F-0110-19F0A-T-N | G    | 1     | 10        | 19mm         | 1.61       | 1.34 | 1.22 | 1.11 | 1.02 |
| 105-SR2513F-112NS | SR2513F-0112-19F0A-T-N | G    | 1     | 12        | 19mm         | 1.61       | 1.34 | 1.22 | 1.11 | 1.02 |
| 105-SR2513F-24NS  | SR2513F-0204-19F0A-T-N | G    | 2     | 4         | 19mm         | 1.61       | 1.34 | 1.22 | 1.11 | 1.02 |
| 105-SR2513F-25NS  | SR2513F-0205-19F0A-T-N | G    | 2     | 5         | 19mm         | 1.61       | 1.34 | 1.22 | 1.11 | 1.02 |
| 105-SR2513F-26NS  | SR2513F-0206-19F0A-T-N | G    | 2     | 6         | 19mm         | 1.61       | 1.34 | 1.22 | 1.11 | 1.02 |
| 105-SR2513F-34NS  | SR2513F-0304-19F0A-T-N | G    | 3     | 4         | 19mm         | 1.61       | 1.34 | 1.22 | 1.11 | 1.02 |
| 105-SR2513F-43NS  | SR2513F-0403-19F0A-T-N | G    | 4     | 3         | 19mm         | 1.61       | 1.34 | 1.22 | 1.11 | 1.02 |
| 105-SR2513F-62NS  | SR2513F-0602-19F0A-T-N | G    | 6     | 2         | 19mm         | 1.61       | 1.34 | 1.22 | 1.11 | 1.02 |

© Copyright 2010 Mouser Electronics

© Copyright 2010 Mouser Electronics