



RoHS Compliant This product is RoHS compliant.

UHM (ULTRA HARD METRIC) 2MM BACKPLANE CONNECTOR

Press Fit Socket

Features:

- 7+ Gbps data rates when mated to standard IEC 61076-4-101 headers.
- Low crosstalk at high frequencies
- 50/100 Ω (single-ended/differential) impedance
- Named as the PICMG230 standard for J2 connectors
- Modular/scalable format IEC 61076-4-101
- 63 mated lines per linear inch
- Dual beam contact construction for high reliability



For quantities of 100 and up, call for quote.

MOUSER STOCK NO.	3M Part No.	Fig.	No. of Contacts	Type	Orientation	Price Each			
						1	5	10	25
517-UHMS110B35AP1TG3	UHM-S110B3-5AP1-TG30	A	110	B	Right Angle	45.52	41.79	41.11	39.22

.100" PAK 100 CARD EDGE CONNECTORS

- Reinforced card-edge resists mouth bowing for consistent contact performance
- Metal cover clips provide superior cover retention
- Bifurcated contacts provide reliable contact with PC boards
- Insulation Material: Glass filled polyester (PBT)
- Flammability: UL 94V-0
- Color: Gray
- Contact Material: Copper alloy
- Contact Plating: 30μ" Gold, Type II, Grade C
- Wire Accommodation: 26 and 28AWG solid or stranded
- Cable Conductor Pitch: .050" (1.27mm)
- Current Rating: 1A
- Insulation Resistance: >1 x 10⁹ at 500VDC
- Withstanding Voltage: 1000 Vrms at sea level
- Temperature Rating: -55°C to +105°C
- RoHS compliant per 3M documentation



For quantities of 200 and up, call for quote.

MOUSER STOCK NO.	3M Part No.	Fig.	No. of Circuits	Description	Price Each			
					1	25	50	100
With Drilled Mounting Flanges								
517-3358-0000	3358-0000	B	10	Card-Edge to Flat Cable	4.28	4.11	3.99	3.87
517-3461-0000	3461-0000	B	20	Card-Edge to Flat Cable	5.58	5.28	5.14	5.04
Without Mounting Flanges								
517-3358-0001	3358-0001	C	10	Card-Edge to Flat Cable	4.28	4.11	3.99	3.87
517-3461-0001	3461-0001	C	20	Card-Edge to Flat Cable	5.58	5.25	5.04	4.90
517-3464-0001	3464-0001	C	40	Card-Edge to Flat Cable	7.91	7.69	7.30	7.14
517-3403-0001	3403-0001	C	64	Card-Edge to Flat Cable	11.04	10.73	10.25	9.96
With Slotted Mounting Flanges								
517-3358-0002	3358-0002	D	10	Card-Edge to Flat Cable	4.28	4.11	3.99	3.87
517-3461-0002	3461-0002	D	20	Card-Edge to Flat Cable	5.58	5.35	5.19	5.04

CARD-EDGE ACCESSORIES

- RoHS compliant per 3M documentation

For quantities of 200 and up, call for quote.

MOUSER STOCK NO.	3M Part No.	Fig.	Description	Price Each			
				1	25	50	100
Strain Reliefs							
517-3448-52	3448-52	E	10 Pin Strain Relief	2.43	2.04	1.95	1.84
517-3448-54	3448-54	E	20 Pin Strain Relief	2.00	1.68	1.57	1.52
Pull Tabs							
517-3490-1	3490-1	F	For 10 pin card-edge connectors	.20	.18	.17	.16
517-3490-2	3490-2	F	For 16P and 20P card-edge connectors	.24	.21	.20	.19
517-3490-3	3490-3	F	For 26P card-edge connectors	.29	.24	.23	.22
Keying Plug							
517-3439-2	3439-2	G	Keying Plug for polarization or keying	.20	.19	.18	.15

7E50 SERIES COMPACTFLASH™ TYPE II CARD HEADERS - SURFACE MOUNT

Features:

- RoHS Compliant per 3M documentation
- Mates with CompactFlash™ Type I and Type II cards
- Meets CFA standards for known compatibility and reliability
- Extended guide rails enable accurate and easy card insertion
- Guide rail ESD click contacts board ground pads
- Single row surface mount solder tails facilitate auto placement and IR soldering
- Insulation Material: High Temperature Thermoplastic
- Flammability: UL94V-0
- Contact Material: Copper Alloy
- Current Rating: 0.5 A
- Insulation Resistance: 10⁹ MΩ min. at 500VDC
- Withstanding Voltage: 500 VAC for 1 minute
- Temperature Rating: -40°C to +85°C
- Process Rating: Maximum 260°C (per J-STD-020C)

For quantities of 100 and up, call for quote.

MOUSER STOCK NO.	3M Part No.	Fig.	Type	Plating	Board Standoff	Price Each		
						1	25	50
With Metal Brace								
517-N7E50-M516B-50-W	N7E50-M516RB-50-WF	H	Normal Type	30μ" Gold	2.00 mm	4.27	3.90	3.67
517-N7E50-N56B-4-W	N7E50-N516RB-40-WF	H	Inverse Type	30μ" Gold	-	4.44	4.05	3.83
517-N7E50-N516B-50-W	N7E50-N516RB-50-WF	H	Inverse Type	30μ" Gold	2.00 mm	3.97	3.69	3.49
Without Metal Brace								
517-N7E50-Q516B-40-W	N7E50-Q516RB-40-WF	I	Normal Type	30μ" Gold	-	4.33	3.95	3.74
517-N7E50-Q516B-50-W	N7E50-Q516RB-50-WF	I	Normal Type	30μ" Gold	2.00 mm	4.16	3.80	3.60
517-N7E50-R516B-50-W	N7E50-R516RB-50-WF	I	Inverse Type	30μ" Gold	2.00 mm	4.16	3.79	3.59
517-N7E50-7516PG-20	N7E50-7516PG-20	J	Normal	Gold Flash	1.64mm	7.92	6.56	5.82
517-N7E50-7516PK-20	N7E50-7516PK-20	J	Normal	Gold Flash	1.64mm	7.92	6.56	5.82
Ejectors								
517-7E50-B716-05	7E50-B716-05	K	CFII NRIL Latching			3.52	2.83	2.39
517-7E50-B516-05	7E50-B516-05	L	CFII Dual Push			2.80	2.24	2.16
Accessories								
517-7E50-B316-04	7E50-B316-04	-	Ejector Button Assembly			1.29	1.09	1.00

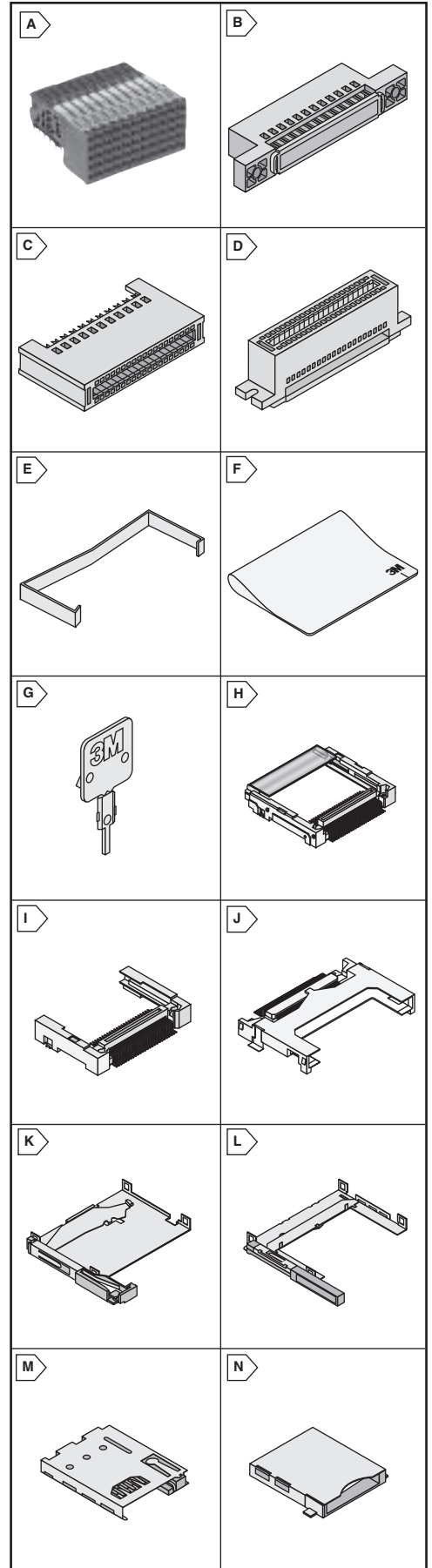
SD™ AND MICROSD™ CONNECTORS

Features:

- Low Profile
- Smooth push-push eject mechanism
- Card Polarization
- Card detect indicator
- Metal-shielded cover
- High Temperature Thermoplastic
- Flammability: UL 94V-0
- Contact Material: Copper Alloy
- Current Rating: 0.5A
- RoHS compliant per 3M documentation

For quantities of 100 and up, call for quote.

MOUSER STOCK NO.	3M Part No.	Fig.	Description	Price Each		
				1	25	50
517-2908-05WB-MG	2908-05WB-MG	M	microSD™, 8P Surface Mount	1.22	1.12	1.02
517-SD-RSMT-2-MQ	SD-RSMT-2-MQ	N	SD™, Right Angle Surface Mount	1.30	1.19	1.09



3M Backplane/Card Edge

