

## IP67 PUSH-PULL HYBRID DATA & POWER CONNECTORS

- Combines Power & Ethernet in one connector
- Push Pull according to IEC 61 076-3-106 variant 4
- Protection Level: IP67
- Suitable for all Ethernet variants
- No of Contacts: Data, 4; Power, 3

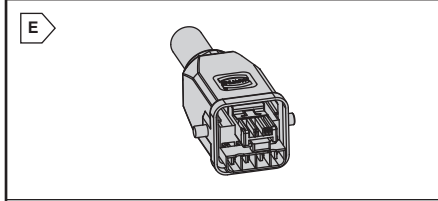
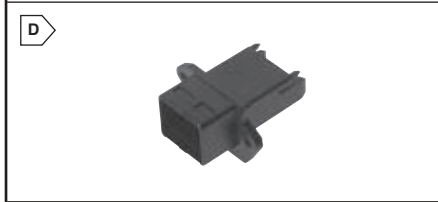
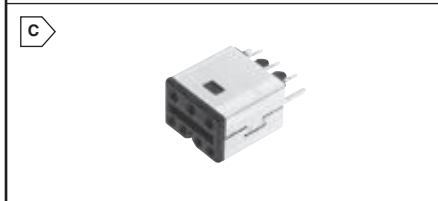
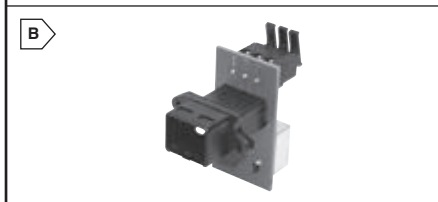
- Termination: Solder Pins
- Power: 32VDC; 5A
- High Packing Density (same as M12)
- Temperature range: -25°C to +70°C
- Housing material: Black polyamide, UL94V-0 rated



RoHS Compliant

For quantities of 25 and up, call for quote.

MOUSER STOCK NO.	HARTING Part No.	Fig.	Description	Price Each		
				1	5	10
<a href="#">617-09451451300</a>	09 45 145 1300	A	Cable Mount Plug	18.82	16.22	15.18
<a href="#">617-09452451300</a>	09 45 245 1300	---	Panel feed through for PCB Mounting	14.44	12.45	11.65
<a href="#">617-09452451320</a>	09 45 245 1320	B	Panel feed through; RJ45 Data Jack & Terminal Block for Power	30.94	26.67	24.95
<a href="#">617-09455451300</a>	09 45 545 1300	C	Female PCB Mount (Insert Only)	6.64	5.72	5.35
<a href="#">617-09455451320</a>	09 45 545 1320	D	Plastic Housing (For use with PCB insert)	11.58	9.98	9.34



## IP67 HYBRID CONNECTORS

- Mating interface: RJ 45 in accordance with IEC 60603-7, plus 4 x power supply
- Data and power integrated into one connector for hybrid ethernet networks
- Mating cycles: 500 min
- Cable plug: Wire gauge: 22-24 AWG stranded 22-23 AWG solid

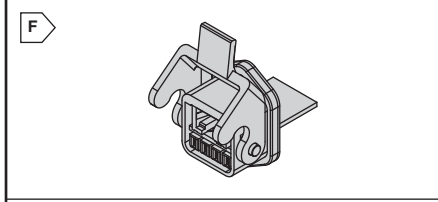
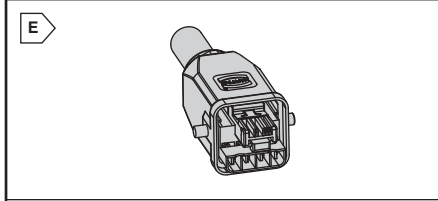
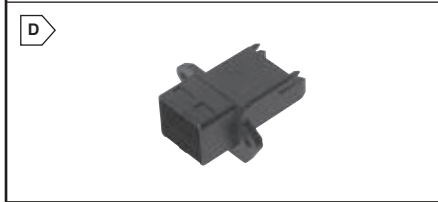
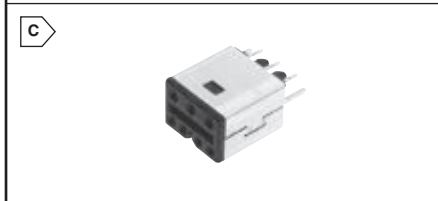
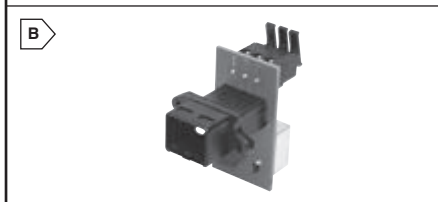
- Panel Feed Through: Panel cut out: 22 x 22mm
- Protection level: IP67
- Temperature range: -40°C to +70°C
- Working voltage power supply: 48 V
- Housing material: Black polyamide, UL94V-0 rated
- RoHS compliant per HARTING documentation



RoHS Compliant

For quantities of 25 and up, call for quote.

MOUSER STOCK NO.	HARTING Part No.	Fig.	Description	Price Each		
				1	5	10
<a href="#">617-09-45-125-1300</a>	09 45 125 1300	E	Cable Plug, straight with plastic cable gland	23.42	21.63	20.08
<a href="#">617-09-45-225-1300</a>	09 45 225 1300	F	Panel Feed Through, internal RJ 45 jack IP20 and cage clamp	33.80	30.99	28.60



## HYBRID DATA & POWER CABLE

- Suitable for PROFInet® Applications
- Fire retardant, non-corrosive jacket
- Cabling standard in acc. w/ ISO/IEC 11 801: Category 5
- Service Temperature: -20° C to +70°C

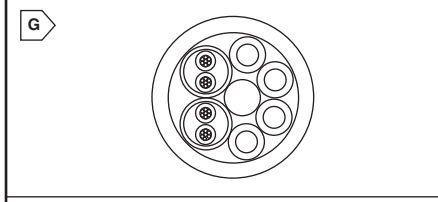
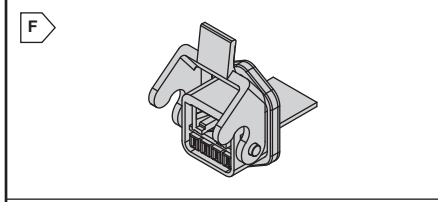
- Sheath: FRNC green, Ø 10.3mm
- Use with Hybrid parts above
- RoHS compliant per HARTING documentation
- For flexible installation



RoHS Compliant

For quantities larger than listed, call for quote.

MOUSER STOCK NO.	HARTING Part No.	Fig.	Description	Price Each
<a href="#">617-09-45-600-0300</a>	09 45 600 0300	G	2x 22AWG Twisted Pairs; 4x 16AWG Power; 100M Cable Ring	1069.13



## IP67 RJ45 PUSH PULL CONNECTORS

- Mating interface: RJ 45 in accordance with IEC 60603-7
- Mating cycles: 750 min
- Protection level: IP67
- Temperature range: -40°C to +70°C
- Housing material: Black polyamide, UL94V-0 rated

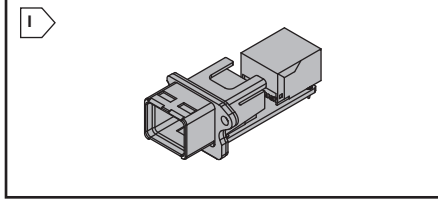
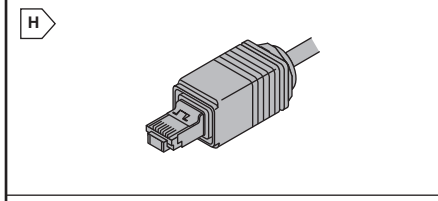
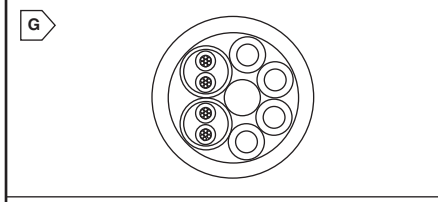
- Cat 5 Data Plug utilizes IDC Termination
- Cat 6 Data Plug utilizes Crimp Termination
- Wire gauge: Cat5 Plug 22-24 AWG; Cat6 Plug 24-26 AWG
- Panel feed through: Panel cut out: 21 x 27 mm
- RoHS compliant per HARTING documentation



RoHS Compliant

For quantities of 25 and up, call for quote.

MOUSER STOCK NO.	HARTING Part No.	Fig.	Description	Price Each		
				1	5	10
<a href="#">617-09-45-145-1500</a>	09 45 145 1500	H	Cat 6 Cable Plug; straight with plastic cable glands; 8 pole	16.06	14.61	14.11
<a href="#">617-09-45-145-1100</a>	09 45 145 1100	H	Cat 5 Cable Plug; straight with plastic cable gland; 4 pole	14.65	13.24	12.55
<a href="#">617-09-45-245-1102</a>	09 45 245 1102	I	Panel Feed through, data only, internal RJ 45 jack	14.55	13.33	12.31



## Crimp Tool

For quantities larger than listed, call for quote.

MOUSER STOCK NO.	HARTING Part No.	Fig.	Description	Price Each
<a href="#">617-09-45-800-0500</a>	09 45 800 0500	---	Crimp Tool for 8 pole (4 pair) connector	345.19