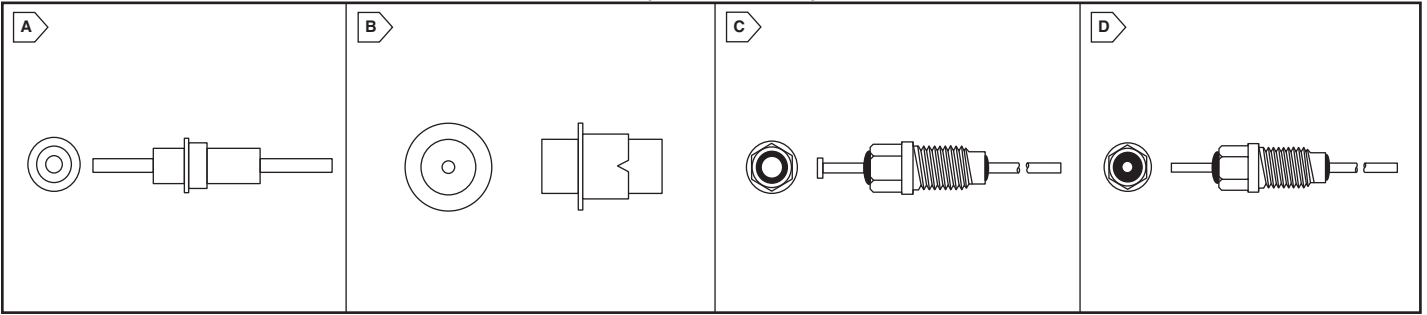


TUSONIX EMI Filters and Feedthru Capacitors



A Subsidiary of CTS Electronic Components

RoHS Compliant This product is RoHS compliant.

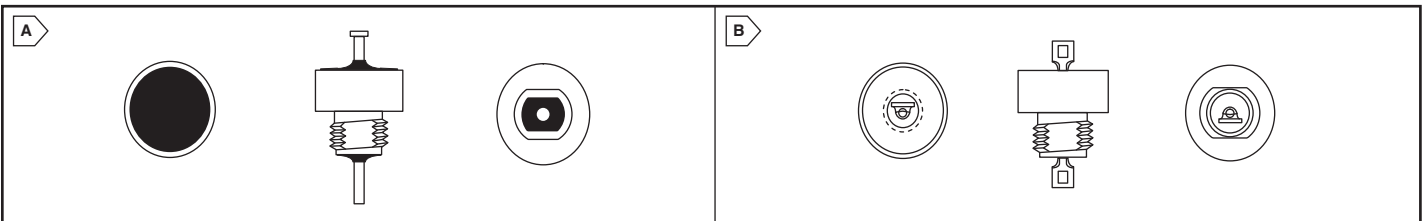


THREADED FILTERS AND FEED-THROUGH CAPACITORS CONT.

For quantities of 100 and up, call for quote.

MOUSER STOCK NO.		Fig.	Ckt	Dia.	AWG	Thread	Hex Size	Working Voltage (DC)	Capacitance (pF)	Minimum No-Load Insertion Loss (dB) @25°C per MIL-Std-220					Price Each					
Mfr.	Mfr. Part No.									1MHz	10MHz	100MHz	1GHz	10GHz	1	10	50			
Threaded and Feed Through Capacitors																				
800—240400X5U0102PLF		A	C	0.23	16	--	--	500@85°C	1,000	--	3	20	35	40	3.17	2.72	2.55			
800—240414X5U0102PLF		-	C	0.23	--	--	--	500@85°C	1,000	--	3	20	35	40	3.12	2.67	2.52			
800—24610X7V0102PLF		B	C	0.17	--	--	--	100@125°C	1,000	--	3	20	35	40	4.25	3.64	3.44			
800—24611X7V0102PLF		B	C	0.17	--	--	--	100@125°C	1,000	--	--	--	--	--	4.82	4.13	3.82			
800—24610X7V0152PLF		B	C	0.17	--	--	--	100@125°C	1,500	--	--	--	--	--	4.25	3.64	3.44			
800—24611X7V0152PLF		B	C	0.173	--	--	--	100@125°C	1,500	--	--	--	--	--	7.42	6.36	5.30			
800—24251X5U0101AALF		C	C	--	--	8-32 UNC-2A	0.187	100@125°C	100	--	--	--	--	--	13.23	11.34	9.45			
800—24251X5U0102AALF		C	C	--	--	8-32 UNC-2A	0.187	100@125°C	1,000	--	--	--	--	--	13.20	11.31	9.45			
800—24251X5U0152AALF		C	C	--	--	8-32 UNC-2A	0.187	100@125°C	1,500	--	--	--	--	--	13.23	11.34	9.45			
800—24251X5W0502AALF		C	C	--	--	8-32 UNC-2A	0.187	100@125°C	5,000	--	--	--	--	--	13.23	11.34	9.45			
800—2425601X5W103ZLF		D	C	--	--	8-32 UNC-2A	0.187	100@125°C	10,000	--	--	--	--	--	10.78	9.24	7.70			
800—24993X5S0102MLF		D	C	--	--	12-28 UNF-2A	0.25	500@85°C	1,000	--	--	--	--	--	11.52	9.87	8.23			
800—24993X5S0152MLF		D	C	--	--	12-28 UNF-2A	0.25	500@85°C	1,500	--	--	--	--	--	11.52	9.87	8.23			
800—24993X5W0103ZLF		D	C	--	--	12-28 UNF-2A	0.25	500@85°C	10,000	--	--	--	--	--	11.54	9.89	8.33			

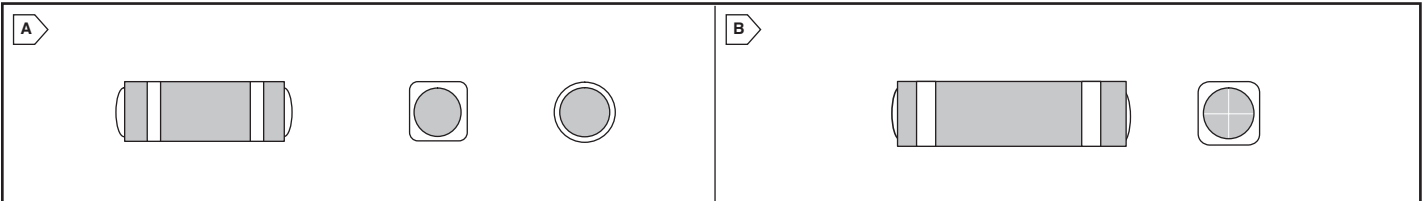
COAXIAL BROADBAND FILTER



For quantities of 100 and up, call for quote.

MOUSER STOCK NO.		Fig.	Ckt	Thread	Working Voltage (DC) @125°C	Capacitance (pF)	Current (A)	Minimum No-Load Insertion Loss (dB) @25°C per MIL-Std-220					Price Each		
Mfr.	Mfr. Part No.							1MHz	10MHz	100MHz	1GHz	10GHz	1	10	50
800—4600-000LF		A	C	1/4-28 UNF-2A	70	1.4µF	15	25	34	44	60	70	24.40	20.91	17.43
800—4601-000LF		B	C	1/4-28 UNF-2A	70	1.4µF	15	25	34	44	60	70	33.25	28.50	23.75
800—4600-050LF		A	L	1/4-28 UNF-2A	70	1.4µF	15	25	34	44	60	70	24.64	21.12	17.60
800—4601-050LF		B	L	1/4-28 UNF-2A	70	1.4µF	15	25	34	44	60	70	34.23	29.34	24.45
800—4601-052LF		B	L	1/4-28 UNF-2A	70	1.4µF	15	25	34	44	60	70	31.02	25.85	23.27
800—4600-009LF		A	C	1/4-28 UNF-2A	200dc/125ac	.15µF	--	7	15	25	40	60	17.33	14.85	12.38
800—4600-053LF		A	L	1/4-28 UNF-2A	50	1.4µF	15	25	34	44	60	70	31.01	26.58	22.15
800—4600-054LF		A	L	1/4-28 UNF-2A	50	1.4µF	15	25	34	44	60	70	32.52	27.87	23.23
800—4601-053LF		B	L	1/4-28 UNF-2A	50	1.4µF	15	25	34	44	60	70	35.43	29.53	26.57
800—4601-054LF		B	L	1/4-28 UNF-2A	50	1.4µF	15	25	34	44	60	70	36.99	30.83	27.74

EMI/RFI SURFACE MOUNT PI & C FILTERS FOR SMT APPLICATIONS



For quantities of 100 and up, call for quote.

MOUSER STOCK NO.		Fig.	Ckt	Working Voltage (DC) @85°C	Capacitance (pF)	Minimum No-Load Insertion Loss (dB) @25°C per MIL-Std-220			Price Each		
Mfr.	Mfr. Part No.					10MHz	100MHz	1GHz	1	10	50
800—4700-006LF		A	Pi	100	100	--	3	16	2.05	1.75	1.70
800—4702-000LF		A	C	100	100	--	1	19	2.39	2.05	1.80
800—4700-009LF		A	Pi	100	470	1	16	40	2.05	1.75	1.70
800—4700-005LF		A	Pi	100	1000	7	40	65	2.05	1.75	1.70
800—4700-003LF		A	Pi	100	2000	10	45	70	2.05	1.75	1.70
800—4700-008LF		A	Pi	100	4000	13	52	70	2.05	1.75	1.70
800—4702-005LF		A	C	100	4000	15	30	45	2.39	2.05	1.80
800—4701-002LF		B	Pi	100	6800	16	60	70	2.30	1.96	1.83
800—4701-001LF		B	Pi	100	8200	20	65	70	2.30	1.96	1.83
800—4700-056LF		A	C	100	--	15	55	70	2.05	1.75	1.70



NEW SUPPLIER

EMI Suppression

Tusonix

NEW SUPPLIER

NEW SUPPLIER

NEW SUPPLIER