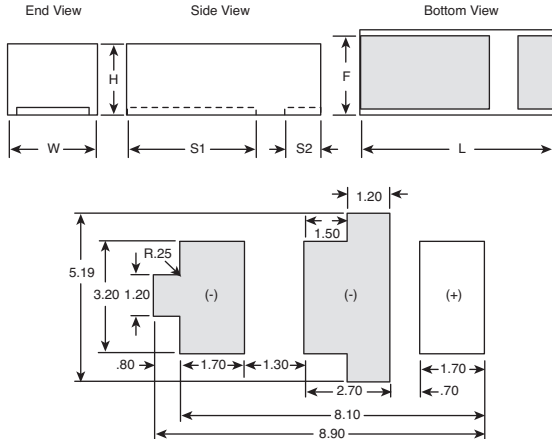


# KEMET Tantalum Surface Mount Capacitors

The Capacitance Company  
**KEMET**  
CHARGED.™

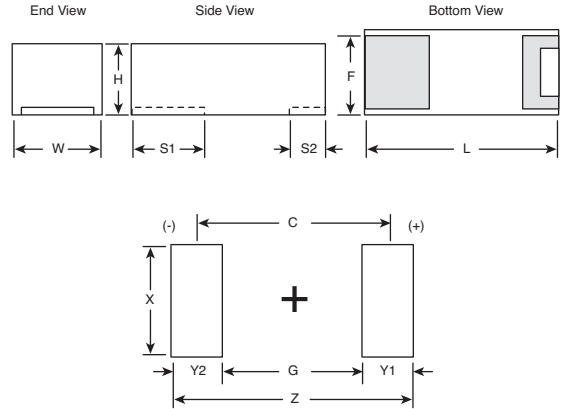
RoHS Compliant This product is RoHS compliant.

### T528 Series Z Case Size



Face-down 7343-17 will NOT fit on standard 7343 solder pads, and movement along Z axis could result in a short. Three-pad design must be used with center pad connection to circuit for low ESL properties. Dual pads on cathode connection required to prevent solder lifting with one cathode pad, and for mechanical hold. Will fit on Sanyo TPL pad specification - all dimensions equal except for .80mm tab extension at left cathode (-) plate as shown above.

### T528 Series I and M Case Size



Case	Z	G	X	Y1 (ref)	Y2 (ref)	C (ref)
528I	3.25	1.65	1.10	.80	.80	2.45
528M	4.30	1.30	2.40	1.20	1.80	2.80

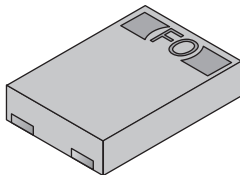
KEMET Tantalum Caps, SMD

## T528 SERIES FACE DOWN TERMINATION TANTALUM SURFACE MOUNT CAPACITORS

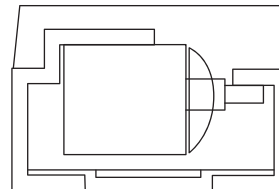
DIMENSIONS: mm

### Features:

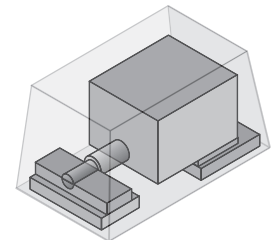
- Low ESR
- Face Down termination
- 100% Surge Current Testing
- EIA 7343-17 Case Size
- Polymer Cathode Technology
- Low ESL: <0.7nH@20MHz for Z Case size
- Low ESR: 9 mOhm for 7343 Case size
- Lead (Pb) free 260°C Reflow Capable
- RoHS compliant/Halogen Free
- High Frequency Cap Retention
- Non-Ignition Failure Mode
- Capacitance: 33 - 470µF
- Voltage (VR): 2.5V - 10V
- 105°C Max. Temperature Capability
- 100% Accelerated Steady State Aging
- Self-Healing Mechanism
- Improved Volumetric Efficiency
- Use up to 90% VR
- Tolerance: ±20%
- Dissipation Factor: 10% @ 25°C, 120Hz
- Dimensions: 7.3mm x 4.3mm x 1.7mm (LxWxH)



### Standard Construction



### Face Down Termination



Reduction in current "loop area" creates proportional reduction in ESL.

For quantities of 1000 and up, call for quote.

MOUSER STOCK NO.	KEMET Part Number	Volt Rating @ 105°C	Value (µF)	ESR mOhm @25°C 100kHz Max.	L Length	W Width	H Height Max.	F LF Width	S1 Cathode	S2 Anode	Price Each					
											1	25	50	100	250	500
80-T528Z337M2R5ATE07	T528Z337M2R5ATE007	2.5	330	7	7.3±0.4	4.3±0.3	1.7	2.8	5.1	1.3	3.90	3.38	3.24	2.97	2.73	2.55
80-T528Z337M2R5ATE8	T528Z337M2R5ATE008	2.5	330	8	7.3±0.4	4.3±0.3	1.7	2.8	5.1	1.3	5.95	4.45	4.44	4.42	3.55	3.13
80-T528Z337M2R5ATE9	T528Z337M2R5ATE009	2.5	330	9	7.3±0.4	4.3±0.3	1.7	2.8	5.1	1.3	5.60	4.90	4.20	3.50	2.80	2.45
80-T528Z337M2R5ATE12	T528Z337M2R5ATE012	2.5	330	12	7.3±0.4	4.3±0.3	1.7	2.8	5.1	1.3	5.60	4.90	4.20	3.50	2.80	2.45
80-T528Z477M2R5ATE8	T528Z477M2R5ATE008	2.5	470	8	7.3±0.4	4.3±0.3	1.7	2.8	5.1	1.3	5.95	4.15	4.44	4.42	3.55	3.13
80-T528Z477M2R5ATE9	T528Z477M2R5ATE009	2.5	470	9	7.3±0.4	4.3±0.3	1.7	2.8	5.1	1.3	5.60	4.90	4.20	3.50	2.80	2.45
80-T528Z477M2R5ATE12	T528Z477M2R5ATE012	2.5	470	12	7.3±0.4	4.3±0.3	1.7	2.8	5.1	1.3	5.60	4.90	4.20	3.50	2.80	2.45
80-T528I107M3ATE150	T528I107M003ATE150	3	100	150	3.2±0.2	1.6±0.2	1	1.2	1	0.7	4.20	3.87	3.50	3.22	2.90	2.50
80-T528I107M3ATE200	T528I107M003ATE200	3	100	200	3.2±0.2	1.6±0.2	1	1.2	1	0.7	3.88	3.40	2.91	2.86	2.23	2.00
80-T528M337M3ATE150	T528M337M003ATE150	3	330	150	3.5±0.2	2.8±0.2	1.5	2	1.2	0.6	4.65	4.10	3.55	3.00	2.45	2.18
80-T528M337M3ATE200	T528M337M003ATE200	3	330	200	3.5±0.2	2.8±0.2	1.5	2	1.2	0.6	4.20	3.68	3.15	3.10	2.41	2.17
80-T528I686M4ATE150	T528I686M004ATE150	4	68	150	3.2±0.2	1.6±0.2	1	1.2	1	0.7	4.20	3.87	3.50	3.22	2.90	2.50
80-T528I686M4ATE200	T528I686M004ATE200	4	68	200	3.2±0.2	1.6±0.2	1	1.2	1	0.7	3.88	3.40	2.91	2.86	2.23	2.00
80-T528M227M4ATE150	T528M227M004ATE150	4	220	150	3.5±0.2	2.8±0.2	1.5	2	1.2	0.6	4.40	3.85	3.30	3.05	2.55	2.20
80-T528M227M4ATE200	T528M227M004ATE200	4	220	200	3.5±0.2	2.8±0.2	1.5	2	1.2	0.6	4.20	3.68	3.15	3.10	2.41	2.17
80-T528Z227M4ATE009	T528Z227M004ATE009	4	220	9	7.3±0.4	4.3±0.3	1.7	2.8	5.1	1.3	5.80	5.08	4.35	3.63	2.90	2.54
80-T528Z227M4ATE012	T528Z227M004ATE012	4	220	12	7.3±0.4	4.3±0.3	1.7	2.8	5.1	1.3	5.60	4.90	4.20	4.13	3.22	2.89
80-T528Z337M4ATE009	T528Z337M004ATE009	4	330	9	7.3±0.4	4.3±0.3	1.7	2.8	5.1	1.3	6.00	5.25	4.50	3.75	3.00	2.63
80-T528Z337M4ATE012	T528Z337M004ATE012	4	330	12	7.3±0.4	4.3±0.3	1.7	2.8	5.1	1.3	5.80	5.08	4.35	4.28	3.33	2.99
80-T528I476M6ATE150	T528I476M006ATE150	6	47	150	3.2±0.2	1.6±0.2	1	1.2	1	0.7	4.20	3.87	3.50	3.22	2.90	2.50
80-T528I476M6ATE200	T528I476M006ATE200	6	47	200	3.2±0.2	1.6±0.2	1	1.2	1	0.7	3.88	3.40	2.91	2.86	2.23	2.00
80-T528M157M6ATE150	T528M157M006ATE150	6	150	150	3.5±0.2	2.8±0.2	1.5	2	1.2	0.6	4.80	4.23	3.65	3.08	2.50	2.21
80-T528M157M6ATE200	T528M157M006ATE200	6	150	200	3.5±0.2	2.8±0.2	1.5	2	1.2	0.6	4.78	4.35	3.72	3.10	2.48	2.18
80-T528Z157M6ATE009	T528Z157M006ATE009	6	150	9	7.3±0.4	4.3±0.3	1.7	2.8	5.1	1.3	5.80	5.08	4.35	4.28	3.33	2.99
80-T528Z157M6ATE012	T528Z157M006ATE012	6	150	12	7.3±0.4	4.3±0.3	1.7	2.8	5.1	1.3	6.09	4.23	3.47	3.26	2.93	2.60
80-T528Z227M6ATE009	T528Z227M006ATE009	6	220	9	7.3±0.4	4.3±0.3	1.7	2.8	5.1	1.3	6.00	5.25	4.50	3.75	3.00	2.63
80-T528Z227M6ATE012	T528Z227M006ATE012	6	220	12	7.3±0.4	4.3±0.3	1.7	2.8	5.1	1.3	5.80	5.08	4.35	4.28	3.33	2.99
80-T528I336M10ATE150	T528I336M010ATE150	10	33	150	3.2±0.2	1.6±0.2	1	1.2	1	0.7	4.25	3.88	3.51	3.23	2.91	2.51
80-T528I336M10ATE200	T528I336M010ATE200	10	33	200	3.2±0.2	1.6±0.2	1	1.2	1	0.7	3.92	3.43	2.94	2.89	2.25	2.02
80-T528M107M10ATE150	T528M107M010ATE150	10	100	150	3.5±0.2	2.8±0.2	1.5	2	1.2	0.6	4.80	4.23	3.65	3.08	2.50	2.21
80-T528M107M10ATE200	T528M107M010ATE200	10	100	200	3.5±0.2	2.8±0.2	1.5	2	1.2	0.6	4.40	3.85	3.30	3.24	2.53	2.27

© Copyright 2009 Mouser Electronics

© Copyright 2009 Mouser Electronics