

CORNELL DUBILIER Film Capacitors



RoHS Compliant This product is RoHS compliant.

CORNELL DUBILIER TYPE 947C METALLIZED POLYPROPYLENE DIELECTRIC

Type 947C series uses the most advanced metallized film technology for long life, high reliability in DC link applications. Their high-voltage and high-current ratings allow for replacement of series-parallel banks of aluminum electrolytic capacitors in high ripple current applications.

Applications:

- Renewable Energy Inverters: Wind, Solar, Fuel Cell
- Transportation: Electric Vehicles
- Industrial: Welders, Motor Drives

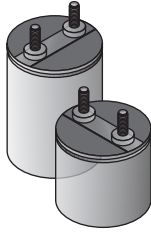


RoHS Compliant

For quantities of 100 and up, call for quote.

Specifications:

- Capacitance Range: 160µF to 730µF
- Tolerance: ±10%
- Rated Voltage: 800 Vdc, 1000 Vdc, 1200 Vdc
- Operating Temperature Range With Ripple: -40°C to +85°C
- Maximum rms Current: 60 A @ +55°C
- Maximum rms Voltage: <230 Vac
- Test Voltage Between Terminals @ 25°C: 150% rated DC voltage for 10s
- Test Voltage Between Terminals and Case @ 25°C: 4 kVac @ 50/60Hz for 1 min
- Life Test: 5000 h @ +85°C, rated voltage



MOUSER STOCK NO.	CDE Part No.	Value (µF)	Voltage (Vdc)	Rated Current ΔT=40°C (A)	Dimensions: mm		Price Each			
					Dia.	Height	1	10	25	50
598-947C361K801CAMS	947C361K801CAMS	360	800	70	92	97	112.88	95.86	94.20	84.68
598-947C491K801CBMS	947C491K801CBMS	490	800	70	92	120	133.79	113.61	111.65	100.37
598-947C601K801CCMS	947C601K801CCMS	600	800	68	92	145	156.58	132.97	130.67	117.46
598-947C731K801CDMS	947C731K801CDMS	730	800	68	92	170	179.41	152.35	149.72	134.59
598-947C231K102CAMS	947C231K102CAMS	230	1000	67	92	97	92.99	78.97	77.60	69.76
598-947C311K102CBMS	947C311K102CBMS	310	1000	63	92	120	108.05	91.75	90.17	81.05
598-947C391K102CCMS	947C391K102CCMS	390	1000	62	92	145	124.46	105.69	103.86	93.37
598-947C471K102CDMS	947C471K102CDMS	470	1000	60	92	170	140.93	119.67	117.61	105.72
598-947C161K122CAMS	947C161K122CAMS	160	1200	62	92	97	84.54	71.79	70.55	63.42
598-947C211K122CBMS	947C211K122CBMS	210	1200	57	92	120	97.09	82.45	81.02	72.84
598-947C271K122CCMS	947C271K122CCMS	270	1200	56	92	145	110.80	94.09	92.47	83.12
598-947C321K122CDMS	947C321K122CDMS	320	1200	56	92	170	124.56	105.77	103.95	93.44

CORNELL DUBILIER TYPE 944U POLYPROPYLENE FILM CAPACITORS

Type 944U is specifically designed for use in medium power DC filtering applications. The low inductance internal construction utilizes low loss metallized polypropylene for high ripple current capability.



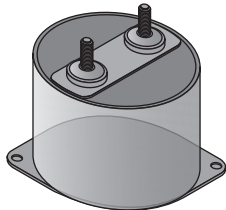
RoHS Compliant

Specifications:

- Capacitance Tolerance: ±10%
- Operating Temperature Range: -40°C to +85°C
- Dielectric Withstand: 150% Rated Vdc 10s - Between Terminals 4000 Vac 60s - Terminals to Case

Applications:

- Inverters: DC Link
- DC Output Filter



MOUSER STOCK NO.	CDE Part No.	Value (µF)	Voltage (Vdc)	Max ESR 10KHz (mΩ)	Dimensions: mm		Price Each			
					Dia.	Height	1	10	25	50
598-944U101K801AAM	944U101K801AAM	100	800	0.50	84.5	40	59.86	50.88	44.89	41.90
598-944U161K801ABM	944U161K801ABM	160	800	0.80	84.5	51	70.64	60.04	52.98	49.44
598-944U221K801ACM	944U221K801ACM	220	800	1.00	84.5	64	83.20	70.72	62.40	58.24
598-944U660K102AAM	944U660K102AAM	66	1000	0.60	84.5	40	54.10	45.98	40.57	37.87
598-944U101K102ABM	944U101K102ABM	100	1000	0.80	84.5	51	73.80	62.73	55.35	51.66
598-944U141K102ACM	944U141K102ACM	140	1000	1.00	84.5	64	70.92	60.28	53.19	49.64
598-944U470K122AAM	944U470K122AAM	47	1200	0.70	84.5	40	51.56	43.82	38.67	36.09
598-944U700K122ABM	944U700K122ABM	70	1200	1.00	84.5	51	52.90	44.96	39.67	37.03
598-944U101K122ACM	944U101K122ACM	100	1200	1.30	84.5	64	68.90	58.56	51.67	48.23
598-944U330K142AAM	944U330K142AAM	33	1400	0.80	84.5	40	50.52	42.94	37.89	35.36
598-944U520K142ABM	944U520K142ABM	52	1400	1.10	84.5	51	56.14	47.71	42.10	39.29
598-944U700K142ACM	944U700K142ACM	70	1400	1.40	84.5	64	66.84	56.81	50.13	46.78

CORNELL DUBILIER IGBT SNUBBER CAPACITOR MODULES SCD SERIES

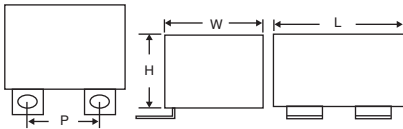
The SCD series offers protection against voltage transients in low to medium current IGBT applications where high dV/dt is encountered. Connect these capacitors from C1 to E2 on a dual IGBT module or form P to N on a six-pack module to eliminate severe voltage transients. Fits IGBTs with 23mm, 25mm, and 28mm lead spacing.

Features:

- High peak and RMS current capability
- Mount directly to the IGBT module
- Low loss polypropylene dielectric
- Self healing
- Low inductance <20nH
- 85°C ambient temperature



RoHS Compliant



MOUSER STOCK NO.	CDE Part No.	Value (µF)	Vdc/Vac	ESR (mΩ)	dV/dt (V/µs)	Ipk(A)	Dimension: mm			Price Each			
							W	L	H	1	5	10	25
598-SCD474K102A-F	SCD474K102A3Z25-F	0.47	1000/330	11	250	118	24.6	47	24	15.42	13.87	12.38	11.60
598-SCD684K102A-F	SCD684K102A3Z25-F	0.68	1000/330	7	200	136	29	47	26.7	19.13	17.20	15.27	14.39
598-SCD1000V1.0-F	SCD105K102A3Z25-F	1	1000/330	4	200	200	29	47	26.7	19.29	17.37	15.44	14.47
598-SCD155K102A-F	SCD155K102A3Z25-F	1.5	1000/330	4	160	240	32.3	45.1	35.6	22.61	20.82	18.85	16.97
598-SCD205K102A-F	SCD205K102A3Z25-F	2	1000/330	4	160	320	34.8	45.1	35.6	21.18	19.39	17.68	15.89
598-SCD224K122A-F	SCD224K122A3Z25-F	0.22	1200/580	19	650	143	24.6	47	24	15.86	14.28	12.69	11.90
598-SCD334K122A-F	SCD334K122A3Z25-F	0.33	1200/580	13	650	215	29	47	26.7	19.64	17.67	15.71	14.72
598-SCD474K122A-F	SCD474K122A3Z25-F	0.47	1200/580	10	500	235	29	47	26.7	19.64	17.67	15.71	14.72
598-SCD105K122A-F	SCD105K122A3Z25-F	1	1200/580	5	500	500	34.8	45.1	35.6	19.60	17.64	15.68	14.70
598-SCD205K122A-F	SCD205K122A3Z25-F	2	1200/580	4	400	800	46.4	56.5	49.5	36.59	33.54	30.49	27.44
598-SCD305K122C-F	SCD305K122C3Z25-F	3	1200/580	5	400	1200	76.2	62.9	38.1	43.70	40.06	36.41	32.78
598-SCD334K162A-F	SCD334K162A3Z25-F	0.33	1600/630	12	650	215	29	47	26.7	19.64	17.67	15.71	14.72
598-SCD474K162A-F	SCD474K162A3Z25-F	0.47	1600/630	10	650	306	32.3	45.1	35.6	21.26	19.49	17.73	15.97
598-SCD105K162A-F	SCD105K162A3Z25-F	1	1600/630	6	500	500	38.1	52	38.1	22.24	19.99	17.75	16.72
598-SCD205K162A-F	SCD205K162A3Z25-F	2	1600/630	5	400	800	44.5	66.7	46.4	30.69	27.60	24.63	23.09
598-SCD224K202A-F	SCD224K202A3Z25-F	0.22	2000/630	19	800	176	24.6	47	24	16.21	14.57	12.94	12.19
598-SCD334K202A-F	SCD334K202A3Z25-F	0.33	2000/630	13	800	264	32.3	45.1	35.6	19.70	17.72	15.75	14.77
598-SCD474K202A-F	SCD474K202A3Z25-F	0.47	2000/630	10	600	282	34.3	56	30.5	20.78	18.68	16.59	15.62

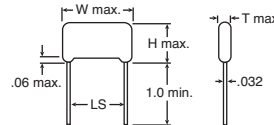
For quantities of 50 and up, call for quote.

CORNELL DUBILIER DPPM SERIES SNUBBER CAPACITORS

Type DPPM radial-leaded, metallized polypropylene capacitors utilize series wound extended foil with floating metallized common foil construction. Type DPPM offers excellent high frequency and high current capabilities and self-healing characteristics. With low inductance and high dV/dt characteristics, DPPM is ideal for snubber applications.

Specifications:

- Capacitance tolerance: ±10%
- Operating temperature range: -40°C to 105°C full-rated voltage @ 85°C - derate linearly to 50% - rated voltage @ 105°C
- Life test: 500 hours at 85°C @ 150% rated voltage



DIMENSIONS: in.



RoHS Compliant

For quantities of 2000 and up, call for quote.

For quantities of 2000 and up, call for quote.

MOUSER STOCK NO.	CDE Part No.	Value (µF)	Dimensions: mm				Price Each			
			W	H	T	LS	1	10	100	1000
1000 VDC (450 VAC)										
5989-1KV.001-F	DPPM10D1K-F	0.001	25.0	11.5	6.5	21.0	.88	.75	.63	.431
5989-1KV.0022-F	DPPM10D22K-F	0.0022	25.0	11.5	6.5	21.0	.88	.75	.63	.41
5989-1KV.0047-F	DPPM10D47K-F	0.0047	25.0	13.5	7.5	21.0	.93	.80	.67	.43
5989-1KV.01-1-F	DPPM10S1K-F	0.01	25.0	16.5	9.5	21.0	1.04	.89	.74	.48
5989-1KV.015-1-F	DPPM10S15K-F	0.015	31.0	17.0	9.5	26.5	1.09	.93	.78	.54
5989-1KV.022-1-F	DPPM10S22K-F	0.022	31.0	18.5	11.0	26.5	1.61	1.36	1.14	.75
5989-1KV.033-1-F	DPPM10S33K-F	0.033	31.0	20.5	13.0	26.5	1.91	1.64	1.37	.88
1200 VDC (475 VAC)										
5989-1.2KV.001-F	DPPM12D1K-F	0.001	25.0	11.5	6.5	21.0	.92	.80	.66	.43
5989-1.2KV.0022-F	DPPM12D22K-F	0.0022	25.0	12.5	7.0	21.0	.92	.80	.66	.43
5989-1.2KV.01-F	DPPM12S1K-F	0.01	31.0	16.0	9.0	21.0	1.19	1.02	.86	.56
5989-1.2KV.015-F	DPPM12S15K-F	0.015	31.0	18.0	10.5	26.5	1.57	1.34	1.12	.83
5989-1.2KV.033-F	DPPM12S33K-F	0.033	31.0	22.0	14.0	26.5	2.35	2.02	1.68	1.09
1600 VDC (500 VAC)										
5989-1.6KV.001-F	DPPM16D1K-F	0.001	25.0	11.5	6.5	21.0	.94	.82	.68	.44

MOUSER STOCK NO.	CDE Part No.	Value (µF)	Dimensions: mm				Price Each			
			W	H	T	LS	1	10	100	1000
1600 VDC (500 VAC) (Cont.)										
5989-1.6KV.0015-F	DPPM16D15K-F	0.0015	25.0	12.5	7.0	21.0	.94	.82	.68	.44
5989-1.6KV.0022-F	DPPM16D22K-F	0.0022	25.0	15.0	8.0	21.0	1.15	.98	.80	.56
5989-1.6KV.0033-F	DPPM16D33K-F	0.0033	25.0	16.5	9.5	21.0	1.11	.96	.79	.51
5989-1.6KV.0047-F	DPPM16D47K-F	0.0047	25.0	19.0	10.5	21.0	1.24	1.06	.88	.57
5989-1.6KV.01-F	DPPM16S1K-F	0.01	31.0	22.0	12.0	26.5	1.50	1.29	1.08	.69
5989-1.6KV.015-F	DPPM16S15K-F	0.015	31.0	24.5	15.0	26.5	1.91	1.64	1.37	.89
5989-1.6KV.022-F	DPPM16S22K-F	0.022	31.0	27.5	18.0	26.5	2.34	2.01	1.67	1.08
2000 VDC (500 VAC)										
5989-2KV.001-F	DPPM20D1K-F	0.001	25.0	12.5	7.0	21.0	1.07	.91	.77	.56
5989-2KV.0015-F	DPPM20D15K-F	0.0015	25.0	14.0	8.0	21.0	1.07	.91	.77	.56
5989-2KV.0022-F	DPPM20D22K-F	0.0022	25.0	16.0	9.0	21.0	1.07	.91	.77	.56
5989-2KV.0033-F	DPPM20D33K-F	0.0033	25.0	17.5	10.5	21.0	1.27	1.09	.91	.59
5989-2KV.0047-F	DPPM20D47K-F	0.0047	31.0	19.0	10.0					