

EPCOS SMD Aluminum Electrolytic Capacitors



This product is RoHS compliant.



SMD ELECTROLYTICS 85°C

Features:

- Miniaturized dimensions
- Load life of 2000 hours at 85°C

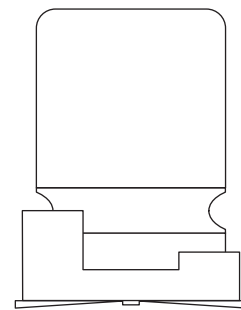
Applications:

- For general purpose applications in the entertainment industry

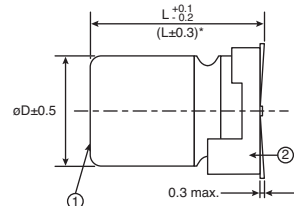
RoHS Compliant

For quantities of 2000, call for quote.

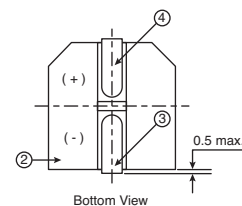
MOUSER STOCK NO.	Epcos Part No.	Voltage (DC)	Value (uF)	Case Size (DxL mm)	D.F.	Ripple Current	Price Each			
							1	100	500	1000
871-B41112A1476M000	B41112A1476M000	4	47	4x5.4	0.35	33	.11	.068	.052	.04
871-B41112A1107M000	B41112A1107M000	4	100	5x5.4	0.35	56	.12	.078	.06	.046
871-B41112A2226M000	B41112A2226M000	6.3	22	4x5.4	0.26	28	.11	.068	.052	.04
871-B41112A2476M000	B41112A2476M000	6.3	47	4x5.4	0.35	40	.11	.068	.052	.04
871-B41112B2476M000	B41112B2476M000	6.3	47	5x5.4	0.26	45	.12	.078	.06	.046
871-B41112B2107M000	B41112B2107M000	6.3	100	6.3x5.4	0.26	70	.16	.10	.077	.059
871-B41112A2227M000	B41112A2227M000	6.3	220	6.3x5.4	0.35	86	.16	.10	.077	.059
871-B41112A3107M000	B41112A3107M000	10	100	5x5.4	0.3	54	.12	.078	.06	.046
871-B41112B3107M000	B41112B3107M000	10	100	6.3x5.4	0.26	76	.16	.10	.077	.059
871-B41112A3108M000	B41112A3108M000	10	1000	10x10	0.26	454	.62	.40	.31	.24
871-B41112A4106M000	B41112A4106M000	16	10	4x5.4	0.16	23	.11	.068	.052	.04
871-B41112A4226M000	B41112A4226M000	16	22	4x5.4	0.26	30	.11	.068	.052	.04
871-B41112B4226M000	B41112B4226M000	16	22	5x5.4	0.16	37	.12	.078	.06	.046
871-B41112A4476M000	B41112A4476M000	16	47	5x5.4	0.26	52	.12	.078	.06	.046
871-B41112B4476M000	B41112B4476M000	16	47	6.3x5.4	0.16	58	.16	.10	.077	.059
871-B41112A4107M000	B41112A4107M000	16	100	6.3x5.4	0.26	86	.16	.10	.077	.059
871-B41112B4227M000	B41112B4227M000	16	220	6.3x7.7	0.26	162	.22	.14	.11	.084
871-B41112B4477M000	B41112B4477M000	16	470	10x10	0.2	330	.62	.40	.31	.24
871-B41115A4477M000	B41115A4477M000	16	470	10x10	0.2	330	.67	.43	.33	.25
871-B41112A4477M000	B41112A4477M000	16	470	8x10	0.2	307	.45	.29	.22	.17
871-B41112A5475M000	B41112A5475M000	25	4.7	4x5.4	0.14	16	.11	.068	.052	.04
871-B41112A5106M000	B41112A5106M000	25	10	4x5.4	0.14	24	.11	.068	.052	.04
871-B41112B5106M000	B41112B5106M000	25	10	5x5.4	0.12	27	.12	.078	.06	.046
871-B41112B5226M000	B41112B5226M000	25	22	6.3x5.4	0.14	42	.16	.10	.077	.059
871-B41112A5476M000	B41112A5476M000	25	47	6.3x5.4	0.2	60	.16	.10	.077	.059
871-B41112B5107M000	B41112B5107M000	25	100	6.3x7.7	0.2	143	.22	.14	.11	.084
871-B41112A5107M000	B41112A5107M000	25	100	8x10	0.16	180	.47	.30	.23	.18
871-B41112A5227M000	B41112A5227M000	25	220	8x10	0.16	232	.47	.30	.23	.18
871-B41112B5337M000	B41112B5337M000	25	330	10x10	0.16	305	.62	.40	.31	.24
871-B41112A5477M000	B41112A5477M000	25	470	10x10	0.16	393	.62	.40	.31	.24
871-B41112A7475M000	B41112A7475M000	35	4.7	4x5.4	0.12	18	.11	.068	.052	.04
871-B41112A7106M000	B41112A7106M000	35	10	4x5.4	0.16	24	.11	.068	.052	.04
871-B41112B7226M000	B41112B7226M000	35	22	6.3x5.4	0.12	46	.16	.10	.077	.059
871-B41112A7476M000	B41112A7476M000	35	47	6.3x5.4	0.16	69	.16	.10	.077	.059
871-B41112B7476M000	B41112B7476M000	35	47	6.3x7.7	0.16	70	.22	.14	.11	.084
871-B41112C7107M000	B41112C7107M000	35	100	6.3x7.7	0.16	132	.22	.14	.11	.084
871-B41112B7227M000	B41112B7227M000	35	220	10x10	0.14	265	.62	.40	.31	.24
871-B41112A7227M000	B41112A7227M000	35	220	8x10	0.14	246	.47	.30	.23	.18
871-B41112A6105M000	B41112A6105M000	50	1	4x5.4	0.12	8.4	.11	.068	.052	.04
871-B41112A6225M000	B41112A6225M000	50	2.2	4x5.4	0.12	13	.11	.068	.052	.04
871-B41112A6475M000	B41112A6475M000	50	4.7	4x5.4	0.14	18	.11	.068	.052	.04
871-B41112A6106M000	B41112A6106M000	50	10	5x5.4	0.14	30	.12	.078	.06	.046
871-B41112B6106M000	B41112B6106M000	50	10	6.3x5.4	0.12	33	.16	.10	.077	.059
871-B41112A6226M000	B41112A6226M000	50	22	6.3x5.4	0.14	43	.16	.10	.077	.059
871-B41112C6476M000	B41112C6476M000	50	47	6.3x7.7	0.14	105	.22	.14	.11	.084
871-B41112A6107M000	B41112A6107M000	50	100	8x10	0.12	181	.47	.30	.23	.18
871-B41112A6227M000	B41112A6227M000	50	220	10x10	0.12	289	.62	.40	.31	.24



D x L (mm)
4 x 5.4 ... 8 x 6.2

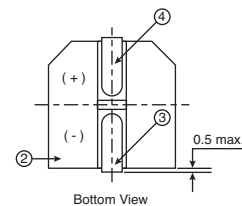
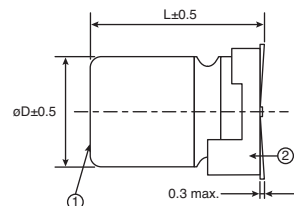


* Applies to 6.3 x 5.8mm, 6.3 x 7.7mm and 8 x 6.2mm



Bottom View

D x L (mm)
8 x 10 ... 10 x 10



Bottom View

- ① Case
- ② Terminal Base Board
- ③ Minus Pole
- ④ Plus Pole

SMD ELECTROLYTICS 105°C

Features:

- Miniaturized dimensions
- Load life of 1000 hours at 105°C

Applications:

- For general purpose applications in the entertainment industry

RoHS Compliant

MOUSER STOCK NO.	Epcos Part No.	Voltage (DC)	Value (uF)	Case Size (DxL mm)	D.F.	Ripple Current	Price Each			
							1	100	500	1000
871-B41121A2107M000	B41121A2107M000	6.3	100	6.3x5.4	0.26	50	.17	.11	.086	.066
871-B41121A3226M000	B41121A3226M000	10	22	5x5.4	0.2	25	.15	.096	.074	.057
871-B41121A3476M000	B41121A3476M000	10	47	6.3x5.4	0.2	0.41	.17	.11	.086	.066
871-B41121A4106M000	B41121A4106M000	16	10	4x5.4	0.16	18	.12	.078	.06	.046
871-B41121A4226M000	B41121A4226M000	16	22	5x5.4	0.16	27	.15	.096	.074	.057
871-B41124A4226M000	B41124A4226M000	16	22	5x5.4	0.2	30	.17	.11	.081	.062
871-B41121A4476M000	B41121A4476M000	16	47	6.3x5.4	0.16	48	.17	.11	.086	.066
871-B41121A4107M000	B41121A4107M000	16	100	6.3x5.4	0.16	60	.17	.11	.086	.066
871-B41121A4227M000	B41121A4227M000	16	220	6.3x7.7	0.16	105	.26	.17	.13	.10
871-B41121A4337M000	B41121A4337M000	16	330	8x10	0.16	195	.51	.33	.25	.19
871-B41121A5475M000	B41121A5475M000	25	4.7	4x5.4	0.14	13	.12	.078	.06	.046
871-B41121A5476M000	B41121A5476M000	25	47	6.3x5.4	0.14	48	.17	.11	.086	.066
871-B41121A5107M000	B41121A5107M000	25	100	6.3x7.7	0.14	91	.26	.17	.13	.10
871-B41121A5227M000	B41121A5227M000	25	220	8x10	0.14	175	.51	.33	.25	.19
871-B41124A5477M000	B41124A5477M000	25	470	10x10	0.16	300	.79	.51	.39	.30
871-B41121A7106M000	B41121A7106M000	35	10	5x5.4	0.12	21	.15	.096	.074	.057
871-B41121A7226M000	B41121A7226M000	35	22	6.3x5.4	0.12	38	.17	.11	.086	.066
871-B41124A7107M000	B41124A7107M000	35	100	6.3x7.7	0.14	84	.22	.14	.11	.082
871-B41121A7107M000	B41121A7107M000	35	100	8x10	0.12	155	.51	.33	.25	.19
871-B41121A6105M000	B41121A6105M000	50	1.0	4x5.4	0.12	7	.12	.078	.06	.046
871-B41121A6106M000	B41121A6106M000	50	10	6.3x5.4	0.12	24	.17	.11	.086	.066

LOW IMPEDANCE SMD ELECTROLYTICS 105°C

Features:

- Low impedance
- Load life of 1000 hours at 105°C
- Wide temperature range (-55°C to +105°C)

Applications:

- Low impedance applications

RoHS Compliant

MOUSER STOCK NO.	Epcos Part No.	Voltage (DC)	Value (uF)	Case Size (DxL mm)	D.F.	Ripple Current	Price Each			
							1	100	500	1000
871-B41141A4476M000	B41141A4476M000	16	47	6.3x5.4	1	140	.20	.13	.10	.079
871-B41141A4107M000	B41141A4107M000	16	100	6.3x7.7	0.6	230	.22	.14	.11	.088
871-B41141A7106M000	B41141A7106M000	35	10	5x5.4	1.8	95	.17	.11	.088	.068
871-B41141A7226M000	B41141A7226M000	35	22	6.3x5.4	1	140	.20	.13	.10	.079

VERY LOW IMPEDANCE SMD ELECTROLYTICS 105°C

Features:

- Very low impedance
- Load life of 3000 hours at 105°C

Applications:

- Low impedance applications

RoHS Compliant

MOUSER STOCK NO.	Epcos Part No.	Voltage (DC)	Value (uF)	Case Size (DxL mm)	D.F.	Ripple Current	Price Each			
							1	100	500	1000
871-B41142A5107M000	B41142A5107M000	25	100	6.3x7.7	0.14	300	.25	.16	.12	.092
871-B41142A5157M000	B41142A5157M000	25	150	8x10	0.14	600	.67	.43	.33	.25
871-B41142A5477M000	B41142A5477M000	25	470	10x10	0.14	850	.95	.61	.47	.36



Epcos Aluminum Caps, SMD