

Touch Screens, Controllers, and DC-AC Inverters



This product is RoHS compliant.



PANJIT SUNLIGHT READABLE TOUCH SCREENS AND CONTROLLERS

EclipsTouch™ Sunlight Readable Touch Screens



Applications:

- Car Entertainment
- GPS
- Tablet PC Displays
- Military
- Emergency
- Vending Machines
- Transportation Services
- Rugged Notebooks
- Aircraft
- Police
- Kiosk Terminals
- ATM's

For quantities of 100 and up, call for quote.

MOUSER STOCK NO.	Panjit Part No.	Size (in.)	Wire	FPC	Thickness (mm)	Glass	Surface	AX	Price Each		
									1	10	50
776-1040405D	1040405D	4"	4	70	1.2	Strengthened	Clear	45 Degree	63.80	61.60	59.40
776-1056801A	1056801A	5.6"	8	83	2.4	Strengthened	AG	135 Degree	148.75	144.20	136.50
776-1070409A	1070409A	7"	4	195	2.4	Strengthened	AG	45 Degree	177.09	171.67	162.50
776-1084404A	1084404A	8.4"	4	67	1.7	Strengthened	Clear	45 Degree	212.51	206.00	195.00
776-1104801F	1104801F	10.4"	8	80	1.7	Strengthened	AG	135 Degree	340.01	329.60	312.00
776-1121802F	1121802F	12.1"	8	114.3	1.7	Strengthened	AG	45 Degree	361.26	350.20	331.50
776-1150402L	1150402L	15"	4	80	1.7	Strengthened	AG	45 Degree	425.00	412.00	390.00

TouchSet™ Controllers

Features:

- Dimensions: 75 x 30 x 10.4mm
- Small Form Factor
- Storage Temp: -25°C to +85°C
- Industry highest 4096x4096 resolution support
- USB/RS232 and PS2 interfaces support
- Multi-point clicking support

CB-DNB



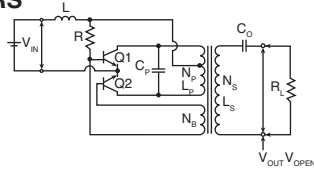
For quantities of 100 and up, call for quote.

MOUSER STOCK NO.	Panjit Part No.	Sensor Support	Sensors Connection	Power Requirement	Standby Current	Operating Current	Price Each		
							1	10	50
776-CB-DNBH	CB-DNBH	4 Wire	4 & 5 Pin AMP	+5Vdc	17mA	20mA	35.25	34.08	32.90
776-CB-DNBF	CB-DNBF	5 Wire	4 Pin ZIF & 5 Pin AMP	+5Vdc	17mA	40mA	35.25	34.08	32.90
776-CB-DSAF	CB-DSAF	4/5/8 Wire	4 & 8 Pin ZIF & 5 Pin AMP	+5Vdc	17mA	20/40/40mA	32.25	31.18	30.10

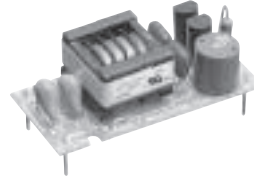
TDK DC-AC INVERTERS

Applications:

- PCs
- Word processors
- Arcade game machines
- Video cameras
- Automobile navigation systems
- Industrial machines



DC/AC Inverter Basic Circuit



Non-Dimming Inverter



Dimming Connector Type Inverter

Non-Dimming PCB Mount Inverters

The non-dimming type is suitable for applications that do not require a variable brightness control. Typical applications include industrial and general information displays as well as for initial evaluation of an LCD panel and the reliability test of the LCD panel. The inverter is simple and inexpensive, therefore it is the best suited for applications that simply illuminate the CCFL.

For quantities of 250 and up, call for quote.

MOUSER STOCK NO.	TDK Part No.	Input Connector	Output Connector	Dimming Function	# of Outputs	Output Power (W)	Input Voltage (VDC)	Output Current (mArms)	Open Voltage (VAC)	Price Each			
										1	10	50	100
810-CXA-L10A	CXA-L10A	PCB Pins	PCB Pins	N	1 or 2	4.5	5	5	900	10.26	9.28	7.81	6.35
810-CXA-L10L	CXA-L10L	PCB Pins	PCB Pins	N	1 or 2	4.5	12	5	900	10.26	9.28	7.81	6.35
810-CXA-M10A-L	CXA-M10A-L	PCB Pins	PCB Pins	N	1 or 2	6	5	5	1200	12.27	11.10	9.34	7.59
810-CXA-M10L-L	CXA-M10L-L	PCB Pins	PCB Pins	N	1 or 2	6	12	5	1200	12.27	11.10	9.34	7.59
810-CXA-M10M-L	CXA-M10M-L	PCB Pins	PCB Pins	N	1 or 2	6	24	5	1200	12.27	11.10	9.34	7.59
810-CXA-M14L-P	CXA-M14L-P	PCB Pins	PCB Pins	N	1 or 2	8	12	7	1500	18.27	16.53	13.92	11.31
810-CXA-P10A-P	CXA-P10A-P	PCB Pins	PCB Pins	N	1 or 2	9	5	5	1500	18.42	16.66	14.03	11.40
810-CXA-P10L-P	CXA-P10L-P	PCB Pins	PCB Pins	N	1 or 2	9	12	5	1500	19.14	17.31	14.58	11.84
810-CXA-P20L-L	CXA-P20L-L	PCB Pins	PCB Pins	N	1 or 2	9	12	10	900	13.41	12.13	10.21	8.30
810-CXA-P10M-P	CXA-P10M-P	PCB Pins	PCB Pins	N	1 or 2	9	24	5	1500	19.14	17.31	14.58	11.84

Non-Dimming Connector Type Inverters

For quantities of 250 and up, call for quote.

MOUSER STOCK NO.	TDK Part No.	Input Connector	Output Connector	Dimming Function	# of Outputs	Output Power (W)	Input Voltage (VDC)	Output Current (mArms)	Open Voltage (VAC)	Price Each			
										1	10	50	100
810-CXA-L0505-NJL	CXA-L0505-NJL	56261-0590 (Molex)	SM02(8.0)B-BHS-1 (JST)	N	1	3.5	5	5	1500	16.44	14.87	12.52	10.17
810-CXA-L0512-NJL	CXA-L0512-NJL	56261-0590 (Molex)	SM02(8.0)B-BHS-1 (JST)	N	1	3.5	12	5	1500	14.70	13.30	11.20	9.10
810-CXA-L0524-NJL	CXA-L0524-NJL	56261-0590 (Molex)	SM02(8.0)B-BHS-1 (JST)	N	1	3.5	24	5	1500	16.44	14.87	12.52	10.17
810-CXA-P1012-NJL	CXA-P1012-NJL	S5B-PH-SM3 (JST)	SM02(8.0)B-BHS-1 (JST)	N	1 or 2	8	12	5	1500	25.05	22.66	19.08	15.50

Dimming Connector Type Inverters

The products described below are inverter units with the addition of a dimming function utilizing a current feedback method. The input voltage is wider making these products suitable for use in battery powered applications such as laptop PCs and other portable equipment. In addition, modules for large LCD backlight systems have protection circuits and alarm signal outputs so that they are suitable for industrial equipment and liquid crystal monitors which require higher reliability. All of the dimming function type models have connectors for both input and output.

For quantities of 250 and up, call for quote.

MOUSER STOCK NO.	TDK Part No.	Input Connector	Output Connector	Dimming Function	# of Outputs	Output Power (W)	Input Voltage (VDC)	Output Current (mArms)	Open Voltage (VAC)	Alarm Signal Function	Shutdown Function	Price Each			
												1	10	50	100
810-CXA-K0505-VJL	CXA-K0505-VJL	56261-0590 (Molex)	SM02(8.0)B-BHS-1 (JST)	Y	1	2	5 to 12	2 to 5	1100	-	-	25.02	22.63	19.06	15.48
810-CXA-K0612-VSL	CXA-K0612-VSL	56261-0590 (Molex)	SM02B-BHSS-1 (JST)	Y	1	5	4.5 to 6	3 to 6	1600	-	-	27.43	24.81	20.89	16.97
810-CXA-L0605-VJL	CXA-L0605-VJL	56261-0590 (Molex)	SM02(8.0)B-BHS-1 (JST)	Y	1	5	4.5 to 6	3 to 6	1600	-	-	27.43	24.81	20.89	16.97
810-CXA-L0612A-VJL	CXA-L0612A-VJL	56261-0590 (Molex)	SM02(8.0)B-BHS-1 (JST)	Y	1	5	9.6 to 14.4	1.6 to 6	1800	-	-	32.01	28.96	24.38	19.81
810-CXA-0271	CXA-0271	S5B-PH-SM3 (JST)	SM02(8.0)B-BHS-1 (JST)	Y	2	5	10.8 to 13.2	2.6 to 6	1500	Y	-	38.13	34.49	29.05	23.60
810-CXA-0326	CXA-0326	56261-0590 (Molex)	SM02(8.0)B-BHS-1 (JST)	Y	2	5	9 to 19	2.2 to 5	1300	Y	-	35.85	32.43	27.31	22.19
810-CXA-0308	CXA-0308	56261-0590 (Molex)	SM03(4.0)B-BHS-1 (JST)	Y	2	6	10.8 to 13.2	2.5 to 5	1250	Y	Y	32.88	29.74	25.05	20.35
810-CXA-P1212A-WJL	CXA-P1212A-WJL	56261-0590 (Molex)	SM03(7-D1)B-BHS-1 (JST)	Y	2	8	10.8 to 13.2	2 to 6	1700	-	Y	36.12	32.68	27.52	22.36
810-CXA-P1212B-WJL	CXA-P1212B-WJL	56261-0590 (Molex)	SM02(8.0)B-BHS-1 (JST)	Y	2	8	10.8 to 13.2	2 to 6	1700	Y	Y	45.99	41.61	35.04	28.47
810-CXA-P1212C-WJL	CXA-P1212C-WJL	56261-0590 (Molex)	SM03(7-D1)B-BHS-1 (JST)	Y	2	8	10.8 to 13.2	2 to 6	1700	Y	Y	56.50	47.08	39.23	32.69
810-CXA-P1612-VJL	CXA-P1612-VJL	S5B-PH-SM3 (JST)	SM02(8.0)B-BHS-1 (JST)	Y	2	8	10.8 to 13.2	4 to 8	1600	-	-	51.72	46.79	39.40	32.01
810-CXA-0385	CXA-0385	S7B-PH-SM3 (JST)	SM02B-BHSS-1 (JST)	Y	4	16	10.8 to 13.2	3 to 6.5	1600	Y	Y	89.86	74.88	62.40	52.00