

# SCHURTER Vandal-Proof Switches



This product is RoHS compliant.

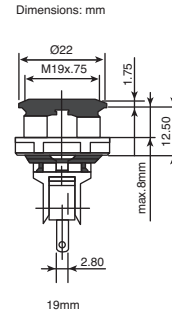
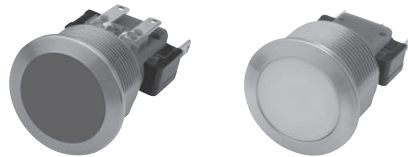
The new MSM CS with ceramic surface is new to switching technology and actuating surface; resistance to scratches, abrasions, impact and chemicals; hypoallergenic to touch. The MSM CS stands up to vandal attacks. It has a very low profile of 1.7mm, which prevents impact to the switch from the side. The switch front withstands a high level of impact with a rating of IK07 and has an IP 69K protection class rating for seal-tight protection against liquids and common chemical agents. The MSM CS microswitch is UL, CSA and ENEC approved and is available in 19 mm and 22 mm mounting diameters. Different switch configurations are offered over a range of 30 VDC to 250 VAC. Current rating ranges from 0.1 to 10 A, depending on switching voltage. The MSM CS is equipped with quick connect terminals to allow for easy assembly. The microswitch is pre-wired in the assembly and then snapped onto the switch housing.

**Technical details:**

- Stainless steel – ceramic (zirconium dioxide) version
- High scratch resistance
- Fully illuminated
- Protection class IP 69K (Front side)
- Voltage range 30 VDC to 250 VAC
- Current range .1 A to 10 A

**Applications:**

- Vending machines
- Information Positioning
- Designer switch - Extension of MSM switch actuator options
- Sanitary
- Medical equipment
- Food processing equipment

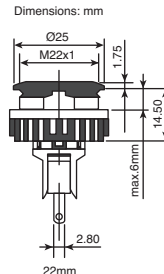
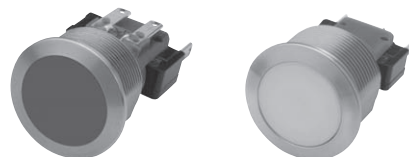


**19mm**

For quantities of 100 and up, call for quote.

MOUSER STOCK NO.	Schurter Part No.	Actuation	Mounting Diameter	Housing Material	Electrical Rating	Price Each			
						1	10	25	50
<b>7021</b>									
693-1241.70211110000	1241.7021.1110000	White Translucent	19 mm	Stainless Steel	.1A/30Vdc	23.61	21.72	19.98	18.38
693-1241.70211120000	1241.7021.1120000	White Translucent	19 mm	Stainless Steel	5A/125VAC or 3A/250VAC	22.92	21.09	19.40	17.85
693-1241.70211130000	1241.7021.1130000	White Translucent	19 mm	Stainless Steel	10A/250VAC	23.61	21.72	19.98	18.38
<b>7022</b>									
693-1241.70221110000	1241.7022.1110000	* No Illumination	19 mm	Stainless Steel	.1A/30Vdc	24.31	22.37	20.58	18.93
693-1241.70221120000	1241.7022.1120000	* No Illumination	19 mm	Stainless Steel	5A/125VAC or 3A/250VAC	24.07	22.14	20.37	18.74
693-1241.70221130000	1241.7022.1130000	* No Illumination	19 mm	Stainless Steel	10A/250VAC	24.31	22.37	20.58	18.93
<b>7026</b>									
693-1241.70261111000	1241.7026.1111000	** Backlighted Red	19 mm	Stainless Steel	.1A/30Vdc	34.04	31.32	28.81	26.51
693-1241.70261112000	1241.7026.1112000	** Backlighted Green	19 mm	Stainless Steel	.1A/30Vdc	34.04	31.32	28.81	26.51
693-1241.70261114000	1241.7026.1114000	** Backlighted Blue	19 mm	Stainless Steel	.1A/30Vdc	36.42	33.51	30.83	28.36
693-1241.70261121000	1241.7026.1121000	** Backlighted Red	19 mm	Stainless Steel	5A/125VAC or 3A/250VAC	33.69	30.99	28.52	26.23
693-1241.70261122000	1241.7026.1122000	** Backlighted Green	19 mm	Stainless Steel	5A/125VAC or 3A/250VAC	33.69	30.99	28.52	26.23
693-1241.70261124000	1241.7026.1124000	** Backlighted Blue	19 mm	Stainless Steel	5A/125VAC or 3A/250VAC	36.05	33.17	30.51	28.07
693-1241.70261131000	1241.7026.1131000	** Backlighted Red	19 mm	Stainless Steel	10A/250VAC	34.04	31.32	28.81	26.51
693-1241.70261132000	1241.7026.1132000	** Backlighted Green	19 mm	Stainless Steel	10A/250VAC	34.04	31.32	28.81	26.51
693-1241.70261134000	1241.7026.1134000	** Backlighted Blue	19 mm	Stainless Steel	10A/250VAC	36.42	33.51	30.83	28.36
693-1241.70261181000	1241.7026.1181000	** Backlighted Red	19 mm	Stainless Steel	5A/250VAC	38.45	35.37	32.54	29.94
693-1241.70261182000	1241.7026.1182000	** Backlighted Green	19 mm	Stainless Steel	5A/250VAC	38.45	35.37	32.54	29.94
693-1241.70261184000	1241.7026.1184000	** Backlighted Blue	19 mm	Stainless Steel	5A/250VAC	41.14	37.85	34.82	32.04

\* Specify legend, see data sheet  
 \*\* Legend optional, see data sheet



**22mm**

For quantities of 100 and up, call for quote.

MOUSER STOCK NO.	Schurter Part No.	Actuation	Mounting Diameter	Housing Material	Electrical Rating	Price Each			
						1	10	25	50
<b>7031</b>									
693-1241.70311110000	1241.7031.1110000	White Translucent	22 mm	Stainless Steel	.1A/30Vdc	28.22	25.96	23.89	21.97
693-1241.70311120000	1241.7031.1120000	White Translucent	22 mm	Stainless Steel	5A/125VAC or 3A/250VAC	27.40	25.21	23.19	21.34
693-1241.70311130000	1241.7031.1130000	White Translucent	22 mm	Stainless Steel	10A/250VAC	28.22	25.96	23.89	21.97
<b>7032</b>									
693-1241.70321110000	1241.7032.1110000	* No Illumination	22 mm	Stainless Steel	.1A/30Vdc	29.07	26.74	24.60	22.64
693-1241.70321120000	1241.7032.1120000	* No Illumination	22 mm	Stainless Steel	5A/125VAC or 3A/250VAC	28.22	25.96	23.89	21.97
693-1241.70321130000	1241.7032.1130000	* No Illumination	22 mm	Stainless Steel	10A/250VAC	29.07	26.74	24.60	22.64
<b>7036</b>									
693-1241.70361111000	1241.7036.1111000	** Backlighted Red	22 mm	Stainless Steel	.1A/30Vdc	39.25	36.11	33.22	30.56
693-1241.70361112000	1241.7036.1112000	** Backlighted Green	22 mm	Stainless Steel	.1A/30Vdc	39.25	36.11	33.22	30.56
693-1241.70361114000	1241.7036.1114000	** Backlighted Blue	22 mm	Stainless Steel	.1A/30Vdc	41.99	38.63	35.54	32.70
693-1241.70361121000	1241.7036.1121000	** Backlighted Red	22 mm	Stainless Steel	5A/125VAC or 3A/250VAC	38.10	35.05	32.25	29.67
693-1241.70361122000	1241.7036.1122000	** Backlighted Green	22 mm	Stainless Steel	5A/125VAC or 3A/250VAC	39.25	36.11	33.22	30.56
693-1241.70361124000	1241.7036.1124000	** Backlighted Blue	22 mm	Stainless Steel	5A/125VAC or 3A/250VAC	41.99	38.63	35.54	32.70
693-1241.70361131000	1241.7036.1131000	** Backlighted Red	22 mm	Stainless Steel	10A/250VAC	39.25	36.11	33.22	30.56
693-1241.70361132000	1241.7036.1132000	** Backlighted Green	22 mm	Stainless Steel	10A/250VAC	39.25	36.11	33.22	30.56
693-1241.70361134000	1241.7036.1134000	** Backlighted Blue	22 mm	Stainless Steel	10A/250VAC	41.99	38.63	35.54	32.70
693-1241.70361181000	1241.7036.1181000	** Backlighted Red	22 mm	Stainless Steel	5A/250VAC	40.01	36.81	33.86	31.16
693-1241.70361182000	1241.7036.1182000	** Backlighted Green	22 mm	Stainless Steel	5A/250VAC	40.01	36.81	33.86	31.16
693-1241.70361184000	1241.7036.1184000	** Backlighted Blue	22 mm	Stainless Steel	5A/250VAC	42.81	39.39	36.23	33.34

\* Specify legend, see data sheet  
 \*\* Legend optional, see data sheet

