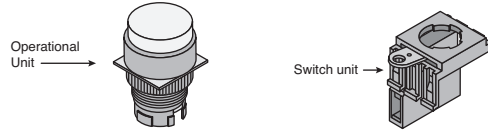


OMRON 22mm Pushbutton Switches & Low Signal Relays **OMRON** INDUSTRIAL AUTOMATION

OMRON A22 SERIES: 22MM NON-ILLUMINATED PUSHBUTTON SWITCHES

Omron's A22 series of pushbuttons offer unique features for maximum flexibility. Switch blocks are easily added or taken off to complete the contact configuration needed. The locking lever ensures easy mounting and removal of switch unit. These switch blocks have finger safe terminals to meet safety standards. Switches offer IP65 degree of protection (water, dust, and oil resistant).



Note: Actual color of yellow pushbuttons more closely resembles amber than true yellow.

Specifications:

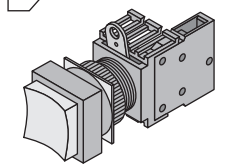
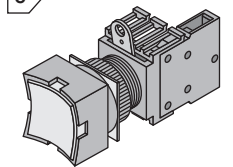
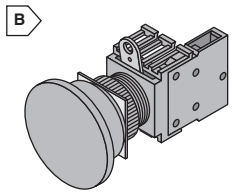
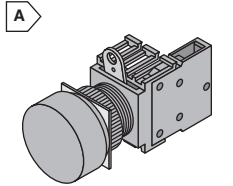
- Contact ratings: 10A @ 24/110 VAC
- Install using either round, forked crimp terminals or ferrules

Each unit includes switch unit, contact block, and IP65 rated color cap.



For quantities of 100 and up, call for quote.

MOUSER STOCK NO.	Omron Part No.	Fig.	Actuator Type	Switch Block Provided	Cap Color	Price Each			
						1	10	25	50
653-A22-SB-10M	A22-SB-10M	A	30mm dia. mushroom	SPST-NO Momentary	Black	17.47	16.88	16.35	15.83
653-A22-SG-10M	A22-SG-10M	A	30mm dia. mushroom	SPST-NO Momentary	Green	17.47	16.88	16.35	15.83
653-A22-SR-10M	A22-SR-10M	A	30mm dia. mushroom	SPST-NO Momentary	Red	16.89	15.37	14.71	13.73
653-A22-SY-10M	A22-SY-10M	A	30mm dia. mushroom	SPST-NO Momentary	Yellow	14.60	14.00	13.54	12.78
653-A22-SW-10M	A22-SW-10M	A	30mm dia. mushroom	SPST-NO Momentary	White	14.60	14.00	13.54	12.78
653-A22-SA-10M	A22-SA-10M	A	30mm dia. mushroom	SPST-NO Momentary	Blue	14.60	13.80	13.10	12.78
653-A22-SB-11M	A22-SB-11M	A	30mm dia. mushroom	SPST-NO+SPST-NC Momentary	Black	22.06	20.07	17.96	16.81
653-A22-SG-11M	A22-SG-11M	A	30mm dia. mushroom	SPST-NO+SPST-NC Momentary	Green	23.35	22.00	20.75	18.85
653-A22-SY-11M	A22-SY-11M	A	30mm dia. mushroom	SPST-NO+SPST-NC Momentary	Yellow	23.76	22.19	21.51	20.81
653-A22-SW-11M	A22-SW-11M	A	30mm dia. mushroom	SPST-NO+SPST-NC Momentary	White	23.35	22.00	20.75	18.85
653-A22-SA-11M	A22-SA-11M	A	30mm dia. mushroom	SPST-NO+SPST-NC Momentary	Blue	23.35	22.00	20.75	18.85
653-A22-MB-10M	A22-MB-10M	B	40mm dia. mushroom	SPST-NO Momentary	Black	15.80	15.12	14.55	13.83
653-A22-MG-10M	A22-MG-10M	B	40mm dia. mushroom	SPST-NO Momentary	Green	15.80	15.12	14.55	13.83
653-A22-MR-10M	A22-MR-10M	B	40mm dia. mushroom	SPST-NO Momentary	Red	18.91	18.26	17.70	17.13
653-A22-MY-10M	A22-MY-10M	B	40mm dia. mushroom	SPST-NO Momentary	Yellow	15.80	15.12	14.55	13.83
653-A22-MW-10M	A22-MW-10M	B	40mm dia. mushroom	SPST-NO Momentary	White	19.55	18.15	16.60	15.00
653-A22-MA-10M	A22-MA-10M	B	40mm dia. mushroom	SPST-NO Momentary	Blue	18.90	18.26	17.70	17.13
653-A22-MB-11M	A22-MB-11M	B	40mm dia. mushroom	SPST-NO+SPST-NC Momentary	Black	25.10	23.74	22.58	21.56
653-A22-MG-11M	A22-MG-11M	B	40mm dia. mushroom	SPST-NO+SPST-NC Momentary	Green	24.20	22.20	21.10	19.00
653-A22-MR-11M	A22-MR-11M	B	40mm dia. mushroom	SPST-NO+SPST-NC Momentary	Red	23.57	22.50	21.21	19.80
653-A22-MY-11M	A22-MY-11M	B	40mm dia. mushroom	SPST-NO+SPST-NC Momentary	Yellow	24.20	22.20	21.10	19.00
653-A22-MW-11M	A22-MW-11M	B	40mm dia. mushroom	SPST-NO+SPST-NC Momentary	White	22.72	21.80	21.05	20.45
653-A22-MA-11M	A22-MA-11M	B	40mm dia. mushroom	SPST-NO+SPST-NC Momentary	Blue	24.20	22.20	21.10	19.00
653-A22-DB-11M	A22-DB-11M	C	Square full guard	SPST-NO+SPST-NC Momentary	Black	30.00	27.54	24.50	23.12
653-A22-DG-11M	A22-DG-11M	C	Square full guard	SPST-NO+SPST-NC Momentary	Green	30.00	27.54	24.50	23.12
653-A22-DR-11M	A22-DR-11M	C	Square full guard	SPST-NO+SPST-NC Momentary	Red	30.00	27.54	24.50	23.12
653-A22-DY-11M	A22-DY-11M	C	Square full guard	SPST-NO+SPST-NC Momentary	Yellow	30.00	27.54	24.50	23.12
653-A22-DW-11M	A22-DW-11M	C	Square full guard	SPST-NO+SPST-NC Momentary	White	30.00	27.54	24.50	23.12
653-A22-DA-11M	A22-DA-11M	C	Square full guard	SPST-NO+SPST-NC Momentary	Blue	30.00	27.54	24.50	23.12
653-A22-CB-11M	A22-CB-11M	D	Square extended	SPST-NO+SPST-NC Momentary	Black	30.00	27.54	24.50	23.12
653-A22-CG-11M	A22-CG-11M	D	Square extended	SPST-NO+SPST-NC Momentary	Green	30.00	27.54	24.50	23.12
653-A22-CR-11M	A22-CR-11M	D	Square extended	SPST-NO+SPST-NC Momentary	Red	30.00	27.54	24.50	23.12
653-A22-CW-11M	A22-CW-11M	D	Square extended	SPST-NO+SPST-NC Momentary	White	28.65	27.75	26.45	25.02
653-A22-CA-11M	A22-CA-11M	D	Square extended	SPST-NO+SPST-NC Momentary	Blue	30.00	27.54	24.50	23.12

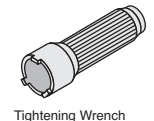
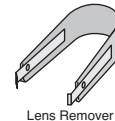
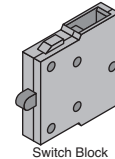


Omron Pushbutton Switches

OMRON ACCESSORIES FOR 22MM SWITCHES

Replacement caps, LEDs, and various other tools are also available. Contact Mouser for these items. For quantities of 100 and up, call for quote.

MOUSER STOCK NO.	Omron Part No.	Description	Price Each			
			1	10	25	50
653-A22-10	A22-10	Replacement switch block, SPST-NO, General Purp.	7.82	7.56	7.33	7.09
653-A22-10S	A22-10S	Replacement switch block, SPST-NO, Microload	18.90	18.26	17.70	17.13
653-A22-01	A22-01	Replacement switch block, SPST-NC, General Purp.	10.29	9.96	9.64	9.33
653-A22-01S	A22-01S	Replacement switch block, SPST-NC, Microload	24.64	23.89	23.14	22.54
653-A22-20	A22-20	Replacement switch block, DPST-NO, General Purp.	24.24	22.43	20.61	19.40
653-A22-20S	A22-20S	Replacement switch block, DPST-NO, Microload	39.88	36.52	34.72	33.16
653-A22-02	A22-02	Replacement switch block, DPST-NC, General Purp.	30.32	29.29	28.38	27.48
653-A22-02S	A22-02S	Replacement switch block, DPST-NC, Microload	39.88	36.52	34.72	33.16
653-A22Z-3905	A22Z-3905	Tightening wrench for lock nuts	18.64	18.01	17.45	16.89
653-A22Z-3901	A22Z-3901	Lamp extractor	6.45	5.99	5.70	5.41
653-A3PJ-5080	A3PJ-5080	Lens remover	3.46	3.30	3.11	3.01



OMRON G6J-Y SERIES: ULTRA-COMPACT 1A DPDT LOW SIGNAL RELAYS

- Reduction of approximately 56% in mounting area compared to the OMRON G6S, for higher-density mounting
- Conforms to North American Telcordia specifications
- Conforms to FCC Part 68
- Function: G6J - Single side stable, G6JU - Single-winding latching
- Contact mechanism: Twin crossbar Ag (Au-clad contact)
- Plastic sealed case
- 140 mW power consumption

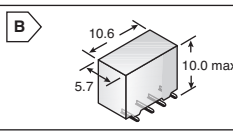
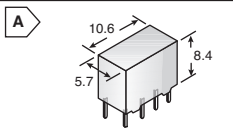


RoHS Compliant

For quantities of 500 and up, call for quote.

MOUSER STOCK NO.	Omron Part No.	Fig.	Rated Coil Current (mA)	Coil (VDC)	Terminals	Price Each			
						1	25	50	100
653-G6J-2P-Y-DC3	G6J-2P-Y-DC3	A	48.0	3	Thru-hole	3.13	3.03	2.71	2.57
653-G6J-2P-Y-DC4.5	G6J-2P-Y-DC4.5	A	32.6	4.5	Thru-hole	3.38	3.03	2.71	2.57
653-G6J-2P-Y-DC5	G6J-2P-Y-DC5	A	28.9	5	Thru-hole	3.38	3.03	2.71	2.57
653-G6J-2P-Y-DC12	G6J-2P-Y-DC12	A	12.3	12	Thru-hole	3.38	3.03	2.71	2.57
653-G6J-2P-Y-DC24	G6J-2P-Y-DC24	A	9.2	24	Thru-hole	3.13	3.03	2.71	2.57
653-G6J-2FS-Y-DC3	G6J-2FS-Y-DC3	B	48.0	3	SMD, short leads	3.13	3.03	2.71	2.57
653-G6J-2FS-Y-DC4.5	G6J-2FS-Y-DC4.5	B	32.6	4.5	SMD, short leads	3.38	3.03	2.71	2.57
653-G6J-2FS-Y-DC5	G6J-2FS-Y-DC5	B	28.9	5	SMD, short leads	3.38	3.03	2.71	2.57
653-G6J-2FS-Y-DC12	G6J-2FS-Y-DC12	B	12.3	12	SMD, short leads	3.38	3.03	2.71	2.57
653-G6J-2FS-Y-DC24	G6J-2FS-Y-DC24	B	9.2	24	SMD, short leads	3.38	3.03	2.71	2.57
653-G6J-2FL-Y-DC3	G6J-2FL-Y-DC3	B	33.7	3	SMD gullwing	3.38	3.03	2.71	2.57
653-G6J-2FL-Y-DC4.5	G6J-2FL-Y-DC4.5	B	22.0	4.5	SMD gullwing	3.38	3.03	2.71	2.57
653-G6J-2FL-Y-DC5	G6J-2FL-Y-DC5	B	20.4	5	SMD gullwing	3.38	3.03	2.71	2.57
653-G6J-2FL-Y-DC12	G6J-2FL-Y-DC12	B	9.0	12	SMD gullwing	3.38	3.03	2.71	2.57

DIMENSIONS: mm



TERMINAL ARRANGEMENT

