

HAMMOND Power Transformers

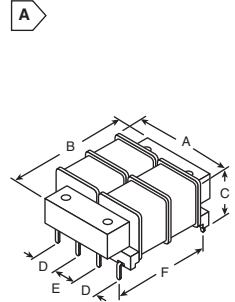


LOW VOLTAGE PC BOARD MOUNT LOW PROFILE DUAL POWER TRANSFORMERS

- Low profile mounting, dual - split bobbin design
- Low primary to secondary coupling, balanced windings, no electrostatic shield required and low EMF radiation due to semi-toroidal design
- CSA certified (File # LR3902) and UL recognized (File #E50394)
- Universal dual primary: 115/230V - 50/60 Hz
- High insulation: Hi-pot of 1750V RMS
- Class B insulation: 130°C

For quantities of 100 and up, call for quote.

MOUSER STOCK NO.	Hammond Part No.	Fig.	Size (VA)	Dimensions: in.						Secondary (RMS)		Price Each			
				A	B	C	D	E	F	Series	Parallel	1	5	10	50
546-229E10	229E10	A	2	1.56	1.88	0.65	0.38	0.38	1.60	10V C.T. @ 250ma	5V @ 500ma	11.77	9.98	9.26	8.65
546-229E12	229E12	A	2	1.56	1.88	0.65	0.38	0.38	1.60	12.6V C.T. @ 200ma	6.3V @ 400ma	11.79	9.98	9.26	8.65
546-229A12	229A12	A	6	1.56	1.88	0.85	0.38	0.38	1.60	12.6V C.T. @ 450ma	6.3V @ 900ma	11.09	10.32	9.62	9.39
546-229B12	229B12	A	12	2.00	2.50	1.07	0.50	0.50	2.00	12.6V C.T. @ 900ma	6.3V @ 1.8A	15.27	12.92	12.00	11.20
546-229A16	229A16	A	6	1.56	1.88	0.85	0.38	0.38	1.60	16V C.T. @ 350ma	8V @ 700ma	14.19	12.00	11.15	10.41
546-229B16	229B16	A	12	2.00	2.50	1.07	0.50	0.50	2.00	16V C.T. @ 700ma	8V @ 1.4A	13.75	11.63	10.80	10.09
546-229A20	229A20	A	6	1.56	1.88	0.85	0.38	0.38	1.60	20V C.T. @ 300ma	10V @ 600ma	12.75	10.80	10.02	9.36
546-229B20	229B20	A	12	2.00	2.50	1.07	0.50	0.50	2.00	20V C.T. @ 600ma	10V @ 1.2A	13.75	11.63	10.80	10.09
546-229A24	229A24	A	6	1.56	1.88	0.85	0.38	0.38	1.60	24V C.T. @ 250ma	12V @ 500ma	14.19	12.00	11.15	10.41
546-229B24	229B24	A	12	2.00	2.50	1.07	0.50	0.50	2.00	24V C.T. @ 500ma	12V @ 1A	15.27	12.92	12.00	11.20
546-229E30	229E30	A	2	1.56	1.88	0.65	0.38	0.38	1.60	30V C.T. @ 85ma	15V @ 170ma	11.79	9.98	9.26	8.65
546-229A30	229A30	A	6	1.56	1.88	0.85	0.38	0.38	1.60	30V C.T. @ 200ma	15V @ 400ma	14.19	12.00	11.15	10.41
546-229B30	229B30	A	12	2.00	2.50	1.07	0.50	0.50	2.00	30V C.T. @ 400ma	15V @ 800ma	15.27	12.92	12.00	11.20
546-229B34	229B34	A	12	2.00	2.50	1.07	0.50	0.50	2.00	34V C.T. @ 340ma	17V @ 680ma	15.27	12.92	12.00	11.20
546-229A40	229A40	A	6	1.56	1.88	0.85	0.38	0.38	1.60	40V C.T. @ 150ma	20V @ 300ma	14.19	12.00	11.15	10.41
546-229B40	229B40	A	12	2.00	2.50	1.07	0.50	0.50	2.00	40V C.T. @ 300ma	20V @ 600ma	15.27	12.92	12.00	11.20
546-229A230	229A230	A	6	1.56	1.88	0.85	0.38	0.38	1.60	230V C.T. @ 25ma	115V @ 50ma	14.19	12.00	11.15	10.41



RoHS Compliant



LOW VOLTAGE OPEN STYLE POWER TRANSFORMERS

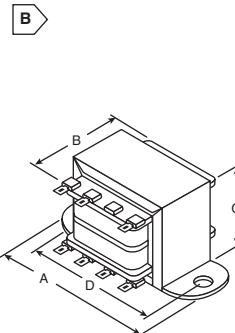
- Choice of two primaries: Single Primary 115VAC or Dual Primary 115/230
- Either series operates on 50/60 Hz
- Combination solder or quick connect terminals
- Split bobbin construction means no electrostatic shield is necessary
- Hi-pot tested to 2 KV RMS
- Economical open style, channel frame - chassis mount design
- UL listed & CSA certified

Single Primary 115V

Dual Primary 115/230V

For quantities of 10 and up, call for quote.

MOUSER STOCK NO.	Hammond Part No.	Fig.	Price Each		Dimensions: in.				MOUSER STOCK NO.	Hammond Part No.	Size VA	Secondary (RMS)	Current (Amps)	Price Each	
			1	5	A	B	C	D						1	5
546-187C10	187C10	B	9.59	8.11	2.81	1.37	1.62	2.37	546-186C10	186C10	12	10VCT	1.2	12.00	10.16
546-187B12	187B12	B	8.35	7.06	2.37	1.25	1.37	2.00	546-186B12	186B12	6.3	12.6VCT	0.5	9.82	8.31
546-187C12	187C12	B	9.33	7.88	2.81	1.37	1.62	2.37	546-186C12	186C12	12.6	12.6VCT	1	10.80	9.15
546-187D12	187D12	B	13.74	11.63	3.25	1.68	1.93	2.81	546-186D12	186D12	31.5	12.6VCT	2.5	15.71	13.28
546-187F12	187F12	B	29.45	24.93	4.03	2.25	2.56	3.50	546-186F12	186F12	100.8	12.6VCT	8	25.52	21.60
546-187C16	187C16	B	9.33	7.88	2.81	1.37	1.62	2.37	546-186C16	186C16	12.8	16VCT	0.8	10.80	9.15
546-187E20	187E20	B	20.73	17.53	3.68	1.81	2.25	3.12	546-186E20	186E20	56	20VCT	2.8	18.65	15.79
546-187D24	187D24	B	13.74	11.63	3.25	1.68	1.93	2.81	546-186D24	186D24	30	24VCT	1.25	15.71	13.28
546-187E24	187E24	B	18.65	15.78	3.68	1.81	2.25	3.12	546-186E24	186E24	57.6	24VCT	2.4	18.65	15.79
546-187F24	187F24	B	29.45	24.93	4.03	2.25	2.56	3.50	546-186F24	186F24	96	24VCT	4	28.35	23.99
546-187E36	187E36	B	18.65	15.78	3.68	1.81	2.25	3.12	546-186E36	186E36	54	36VCT	1.5	18.65	15.79
546-187F48	187F48	B	29.45	24.93	4.03	2.25	2.56	3.50	546-186F48	186F48	96	48VCT	2	25.52	21.60
546-187B120	187B120	B	8.35	7.06	2.37	1.25	1.37	2.00	546-186B120	186B120	6	120VCT	0.05	9.82	8.31



RoHS Compliant



LOW VOLTAGE PC BOARD MOUNT LOW PROFILE POWER TRANSFORMERS

- Both series operate on 50/60 Hz current
- Low profile, split bobbin design
- One year warranty
- High insulation: Hi-pot of 2500V RMS
- CSA certified (# LR3902) and UL recognized (# E50394)
- Dual winding secondaries, non-concentrically wound
- Low primary to secondary coupling - no electrostatic shield required.
- No mounting hardware required on 1.1 and 2.4 VA sizes, two hole mounting on 6, 12 and 20VA sizes, four hole mounting on 36VA size (mounting screws not provided).
- P.C. board mount with industry standard pin spacing.

Single Primary 115V

Dual Primary 115/230V

For quantities of 10 and up, call for quote.

MOUSER STOCK NO.	Hammond Part No.	Fig.	Price Each		Dimensions: in.				MOUSER STOCK NO.	Hammond Part No.	Size VA	Secondary (RMS)		Price Each		
			1	5	A	B	C	D				E	Series	Parallel	1	5
546-164D10	164D10	C	7.37	6.23	1.38	1.13	1.31	0.25	0.25	546-162D10	162D10	1.1	10V C.T. @ .11A	5V @ .22A	8.35	7.06
546-164E10	164E10	C	8.08	6.83	1.38	1.13	1.19	0.25	0.25	546-162E12	162E12	2.4	10V C.T. @ .25A	5V @ .5A	8.85	7.48
546-164G10	164G10	C	9.82	8.31	1.88	1.56	1.50	0.30	0.40	546-162G10	162G10	12	10V C.T. @ 1.2A	5V @ 2.4A	10.80	9.14
546-164E12	164E12	C	7.85	6.64	1.38	1.13	1.19	0.25	0.25	546-162E12	162E12	2.4	12.6V C.T. @ .2A	6.3V @ .4A	8.85	7.48
546-164F12	164F12	C	8.35	7.06	1.63	1.31	1.31	0.25	0.35	546-162F12	162F12	6	12.6V C.T. @ .5A	6.3V @ 1.0A	9.33	7.89
546-164G12	164G12	C	9.82	8.31	1.88	1.56	1.50	0.30	0.40	546-162G12	162G12	12	12.6V C.T. @ 1.0A	6.3V @ 2.0A	10.80	9.14
546-164J16	164J16	C	16.69	14.13	2.63	2.19	1.56	0.40	0.40	546-162J16	162J16	36	16V C.T. @ 2.25A	8V @ 4.5A	17.67	14.95
546-164D20	164D20	C	7.37	6.23	1.38	1.13	1.31	0.25	0.25	546-162D20	162D20	1.1	20V C.T. @ .055A	10V @ .11A	8.35	7.06
546-164E20	164E20	C	7.85	6.64	1.38	1.13	1.19	0.25	0.35	546-162E20	162E20	2.4	20V C.T. @ .12A	10V @ .24A	8.85	7.48
546-164F20	164F20	C	8.35	7.06	1.63	1.31	1.31	0.25	0.35	546-162F20	162F20	6	20V C.T. @ .3A	10V @ .6A	9.33	7.89
546-164G20	164G20	C	10.10	8.53	1.88	1.56	1.50	0.30	0.40	546-162G20	162G20	12	20V C.T. @ .6A	10V @ 1.2A	10.80	9.14
546-164H20	164H20	C	13.26	11.21	2.25	1.88	1.44	0.30	0.40	546-162H20	162H20	20	20V C.T. @ 1A	10V @ 2.0A	13.75	11.63
546-164J20	164J20	C	16.69	14.13	2.63	2.19	1.56	0.40	0.40	546-162J20	162J20	36	20V C.T. @ 1.8A	10V @ 3.6A	17.67	14.95
546-164D24	164D24	C	7.37	6.23	1.38	1.13	1.31	0.25	0.25	546-162D24	162D24	1.1	24V C.T. @ .045A	12V @ .09A	8.35	7.06
546-164E24	164E24	C	7.85	6.64	1.38	1.13	1.19	0.25	0.35	546-162E24	162E24	2.4	24V C.T. @ .1A	12V @ .2A	8.85	7.48
546-164F24	164F24	C	8.35	7.06	1.63	1.31	1.31	0.25	0.35	546-162F24	162F24	6	24V C.T. @ .25A	12V @ .5A	9.33	7.89
546-164G24	164G24	C	10.10	8.53	1.88	1.56	1.50	0.30	0.40	546-162G24	162G24	12	24V C.T. @ .5A	12V @ 1.0A	11.99	10.14
546-164H24	164H24	C	13.26	11.21	2.25	1.88	1.44	0.30	0.40	546-162H24	162H24	20	24V C.T. @ .8A	12V @ 1.6A	13.75	11.63
546-164J24	164J24	C	16.69	14.13	2.63	2.19	1.56	0.40	0.40	546-162J24	162J24	36	24V C.T. @ 1.5A	12V @ 3.0A	17.67	14.95
546-164D28	164D28	C	7.37	6.23	1.38	1.13	1.31	0.25	0.25	546-162D28	162D28	1.1	28V C.T. @ .04A	14V @ .08A	8.35	7.06
546-164E28	164E28	C	8.08	6.83	1.38	1.13	1.19	0.25	0.25	546-162E28	162E28	2.4	28V C.T. @ .085A	14V @ .17A	8.85	7.48
546-164F28	164F28	C	8.35	7.06	1.63	1.31	1.31	0.25	0.35	546-162F28	162F28	6	28V C.T. @ .2A	14V @ .4A	9.33	7.89
546-164G28	164G28	C	9.82	8.31	1.88	1.56	1.50	0.30	0.40	546-162G28	162G28	12	28V C.T. @ .42A	14V @ .84A	10.80	9.14