

PHOENIX CONTACT Surge Protection Devices

SURGE PROTECTION DEVICES FOR WIRELESS DATA, SIGNAL, AND MOBILE PHONE SYSTEMS

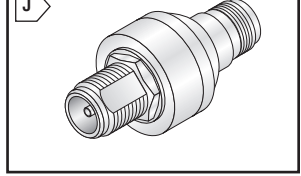
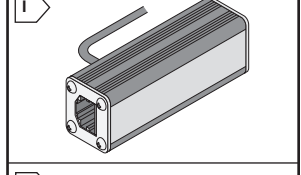
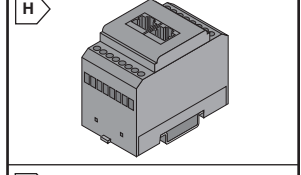
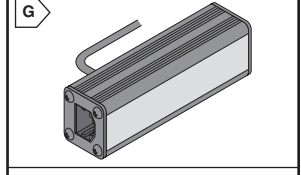
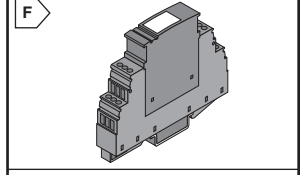
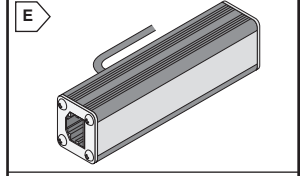
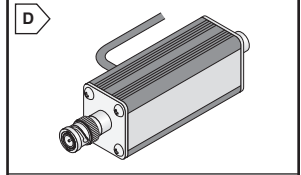
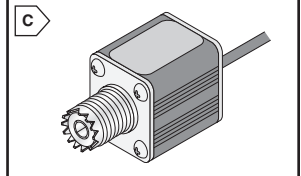
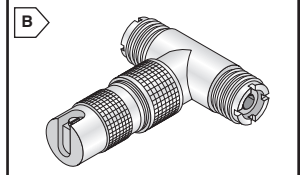
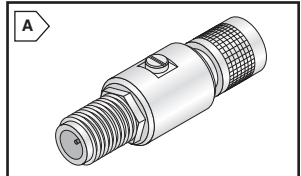
Features:

- The unit can be mounted directly to the coaxial cable, or attached to the bulkhead with the use of a mounting bracket.
- Uses a removable gas tube for easy replacement if direct lightning strike causes a failure.
- Impedance matching allows high transmission capabilities without signal attenuation or degradation.
- Metal housing provides superior shielding (EMI/RFI) properties for high-speed data interfaces.



For quantities of 25 and up, call for quote.

MOUSER STOCK NO.		Fig.	Phoenix Type	Description	MCOV DC/AC	Price Each		
Mfr.	Mfr. Part No.					1	5	10
651	2818148	A	CN-UB-280DC-SB	For Coax Cables, Type N Male-BNC Female	280V / 195V	76.25	71.76	67.77
651	2818850	A	CN-UB-280DC-BB	For Coax Cables, Type N Female-BNC Female	280V / 195V	76.25	71.76	67.77
651	2818135	-	CN-UB/MP	Tongue for attaching CN-UB and CD-LAMBDA to Panels	- - - - -	6.58	6.21	5.96



SURGE PROTECTION DEVICES FOR TWO-WAY RADIO COMMUNICATION SYSTEMS

Features:

- Series devices are products designed for UHF frequencies.
- Available as series connected device with UHF or Type N connector.



For quantities of 25 and up, call for quote.

MOUSER STOCK NO.		Fig.	Phoenix Type	Description	MCOV DC/AC	Price Each		
Mfr.	Mfr. Part No.					1	5	10
651	2782135	B	RF-TRAB	Transmit Cap 200 W Connection: UHF Fem/Fem	180V / 130V	109.41	102.97	97.25
651	2765084	B	RF-TRAB 500	Transmit Cap 800 W Connection: UHF Fem/Fem	375V / 265V	109.41	102.97	97.25
651	2782575	C	RF-TRAB-A1	Transmit Power 200 W Connection: UHF	180V / 130V	77.29	72.74	68.70

* Has CSA Approval

SURGE PROTECTION DEVICES FOR VIDEO SURVEILLANCE SYSTEMS

Features:

- C-UFB/E and CTNC-UFB/E have been specially designed to meet demands of video systems with isolated (floating) grounds.
- The protection circuits feature a hybrid circuit with fast acting silicon avalanche diode arrays line to shield and high current handling gas discharge tube protection line to shield, line to ground, and shield to ground.
- C-UFB are for video systems with grounded shield connections. Protected circuit features a hybrid circuit with a fast acting silicon avalanche diode array and high current handling gas discharge tube protection circuit line to shield (ground).
- Degree of protection in acc. with IEC 60529/EN 60 529 IP 20, Test Standards: IEEE C62.36.

For quantities of 25 and up, call for quote.

MOUSER STOCK NO.		Fig.	Phoenix Type	Description	MCOV DC/AC	Price Each		
Mfr.	Mfr. Part No.					1	5	10
651	2782300	D	C-UFB- 5DC/E	Signal Voltage 5 V, BNC Female/Male, 50	5V DC	132.84	125.03	118.08
651	2782313	D	C-UFB-24DC/E	Signal Voltage 24 V, BNC Female/Male, 50	30V DC	132.84	125.03	118.08
651	2763604	D	C-UFB-5DC/E75	Signal Voltage 5 V, BNC Female/Male, 75	6.2V DC	132.84	125.03	118.08
651	2762087	D	CTNC-UFB-5DC/E	Signal Voltage 5 V, TNC Female/Male, 50	6V / 4V	181.04	170.39	163.19
651	2797858	D	C-UFB- 5DC	Signal Voltage 5 V, BNC Female/Male, 50	6V / 4V	154.59	145.50	137.42
651	2797861	D	C-UFB-24DC	Signal Voltage 24 V, BNC Female/Male, 50	30V / 21V	154.59	145.50	137.42

SURGE PROTECTION DEVICES FOR ISDN AND T1 INTERFACES

Features:

- Hybrid circuit provides low clamping voltage with high surge current discharge capability.
- Metal housing provides superior shielding (EMI/RFI) properties for high-speed data interfaces.
- Special designs for high data transmission without attenuation.
- Degree of protection in acc. with IEC 60529/EN 60 529 IP 20, Test Standards: IEEE C62.36.

For quantities of 25 and up, call for quote.

MOUSER STOCK NO.		Fig.	Phoenix Type	Description	MCOV DC/AC	Price Each		
Mfr.	Mfr. Part No.					1	5	10
651	2748276	E	D-TR1/ISDNA/RJ45BB	Protect Adapt for ISDN S0 Bus, RJ45 Fem/Fem	6.2V / 50V	185.87	174.94	165.22
651	2858098	F	PT 2-ISDN NT-ST	Protection Plug for ISDN and T1 Interfaces	128V / 90V	97.75	92.00	86.89
651	2856113	F	PT 1x2-BE	Base for PT 2/ISDN NT-ST	128V / 90V	43.83	41.25	38.96
651	2838050	G	D-DS1-A/RJ45-BB	Protect Adapt for T1/E1 Systems, RJ45 Fem/Fem	7V DC	181.72	171.03	161.53

SURGE PROTECTION DEVICES FOR ANALOG PHONE LINES (POTS)

Features:

- Telecommunications protection with RJ12/RJ45 female connectors can be used internationally for the protection of analog telecom interfaces, such as, telephones, telefaxes, modems, and answering machines with a maximum operating voltage of 185 V.
- D-FM-A/RJ45-BB this product series is connected for analog phone lines (POTS). Hybrid silicon avalanche diode array and Gas Discharge Tube provides tight clamping voltage line to line on each signal pair and high surge current handling capacity line to line, line to shield, and shield to ground.
- MT-2FM-RJ12 is a DIN rail mount version of the D-FM-A/RJ45-BB. Ideal for RTU applications where phone lines are used for Telemetry. The IN and OUT connects can be made via screw clamp terminal blocks. The OUT side can be connected with RJ11 and RJ12 connectors. All 4 lines of interface are protected.
- Degree of protection in acc. with IEC 60529/EN 60 529 IP 20, Test Standards: IEEE C62.36.

For quantities of 25 and up, call for quote.

MOUSER STOCK NO.		Fig.	Phoenix Type	Description	MCOV	Price Each		
Mfr.	Mfr. Part No.					1	5	10
651	2818795	G	D-FM-A/RJ45-BB	Protect Adapt for Analog, RJ45 Female/Female	185V DC	149.45	140.66	132.85
651	2838937	H	MT-2FM-RJ12	Adapt for Rail Mounting On NS 35/7.5	185V DC	157.08	147.84	139.63

SURGE PROTECTION FOR DATA NETWORKS / ETHERNET

Features:

- Metal housing improves shielding and overall performance.
- Independent testing certifies low attenuation and interference requirements of CAT 5E cabling with 10/100 Base T Ethernet.
- All eight pins of the RJ45 connection are protected, ensuring complete protection independent of connector wiring.

For quantities of 5 and up, call for quote.

MOUSER STOCK NO.		Fig.	Phoenix Type	Description	MCOV	Price Each	
Mfr.	Mfr. Part No.					1	5
651	2858991	I	D-LAN-CAT.5E	Protect Adapt LAN Interface, Includes RJ45 Cable	7V DC		108.02
651	2859084	I	D-LAN-CAT.5E-U	Adapt LAN with Universal DIN Rail Mount Foot	7V DC		101.82

SURGE PROTECTION FOR ANTENNA CONNECTIONS

Features:

- Used for high frequency applications
- Discharge surge current is 60KA
- VSWR in a 50 ohm system is 1.15dB or less from 2.4-5.9GHz
- Protects 802.11 radio and Bluetooth
- Uses lambda/4 branch line technology

For quantities of 25 and up, call for quote.

MOUSER STOCK NO.		Fig.	Phoenix Type	Description	Price Each		
Mfr.	Mfr. Part No.				1	5	10
651	2838490	J	CD-LAMBDA/4-5.9-BB	CoaxTRAB, protective adapter for antenna connections	109.64	103.19	97.46