

HAMMOND Transformers



PUSH-PULL "CLASSIC" TUBE TYPE - ULTRA LINEAR OUTPUT TRANSFORMERS

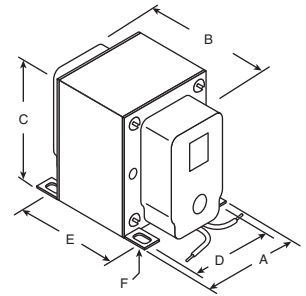


RoHS Compliant

- Designed for push-pull tube output circuits
- Enclosed (shielded), 4 slot, above chassis Type "X" mounting, both end bells include knockouts for optional above chassis wiring
- Frequency response 30Hz to 30kHz @ full rated power (± 1db max. ref. 1kHz) minimum
- Insulated flexible leads 8" min.
- All units include 40% screen taps for Ultra-Linear operation (if desired)
- Typical applications - Push-Pull: triode, Ultra-Linear pentode, pentode and tetrode connected audio output

For quantities of 50 and up, call for quote.

MOUSER STOCK NO.	Hammond Part No.	Audio Watts	Impedance		Dimension: in.							Price Each		
			Primary	Secondary	A	B	C	D	E (±1/16")	F (slot)	1	5	10	
546-1608	1608	10	8,000ct	4/8/16	2.50	2.75	3.06	2.00	1.69	.203 x .38	56.55	47.85	44.43	
546-1609	1609	10	10,000ct	4/8/16	2.50	2.75	3.06	2.00	1.69	.203 x .38	62.83	53.16	49.36	
546-1615	1615	15	5,000ct	4/8/16	2.50	3.25	3.06	2.00	2.19	.203 x .38	62.83	53.18	50.71	
546-1620	1620	20	6,600ct	4/8/16	2.50	3.50	3.06	2.00	2.44	.203 x .38	72.04	60.94	56.60	
546-1650-F	1650F	25	7,600ct	4/8/16	2.50	3.50	3.06	2.00	2.44	.203 x .38	84.83	71.78	67.18	
546-1645	1645	30	5,000ct	4-8-16-70V	3.13	3.50	3.81	2.50	2.19	.203 x .38	84.83	71.78	66.65	
546-1650H	1650H	40	6,600ct	4/8/16	3.13	4.00	3.81	2.50	2.69	.203 x .38	129.92	109.93	102.07	
546-1650K	1650K	50	3,400ct	4/8/16	3.13	4.00	3.81	2.50	2.69	.203 x .38	136.91	115.85	107.58	
546-1650N	1650N	60	4,300ct	4/8/16	3.13	4.25	3.81	2.50	2.94	.203 x .38	122.54	103.68	96.27	
546-1650P	1650P	60	6,000ct	4/8/16	3.13	4.25	3.81	2.50	2.94	.203 x .38	122.54	103.68	96.27	
546-1650R	1650R	100	5,000ct	4/8/16	3.75	4.25	4.56	3.00	3.06	.203 x .38	127.25	107.67	99.97	
546-1650T	1650T	120	1,900ct	4/8/16	3.75	4.50	4.56	3.00	3.31	.203 x .38	147.88	125.14	116.20	
546-1650W	1650W	280	1,900ct	4/8/16	4.38	7.50	5.25	3.50	5.88	.203 x .38	282.75	239.26	222.16	



"CLASSIC" ENCLOSED PLATE AND FILAMENT TRANSFORMERS

- Universal Primary, 100, 110, 120, 200, 220, 240VAC, 50/60Hz
- H.V.DC current measured with wave C.T. rectifier and capacitor input filter
- Concentric wound windings for low stray field and low noise
- Includes bias tap (50VAC) from high voltage C.T.
- Enclosed, 4 hole chassis mount
- Minimum 6" long leads
- Class A insulation (105°C)
- Hi-Pot test of 2,000VRMS
- Conservative design - CSA certified (#LR3902)
- P/N 300BX designed for use with 300B tube designs and the 302AX designed for 2A3 tube designs

For quantities of 5 and up, call for quote.

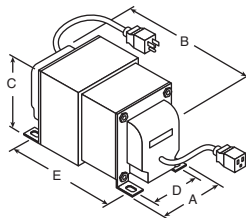
MOUSER STOCK NO.	Hammond Part No.	Total PWR (VA)	Secondary		Bias Tap (VAC)	Filament #1 (VAC)	Filament #2 (VAC)	Filament #3 (VAC)	Dimension: in.						Price Each
			(RMS)	DC (ma)					A	B	C	D	E	F (slot)	
546-300BX	300BX	280	400-0-400	250	50	5Vct@1.2A	5Vct@3A	6.3Vct@6A	3.75	5.00	4.56	3.00	3.81	.203 x .38	182.85
546-302AX	302AX	198	300-0-300	200	50	2.5Vct@2.5A	5Vct@3A	6.3Vct@6A	3.75	4.00	4.56	3.00	2.81	.203 x .38	146.29
546-363CX	363CX	119	180-0-180	250	50	5Vct@3A	---	---	3.13	3.75	3.81	2.50	2.44	.203 x .38	109.72
546-369AX	369AX	40	125-0-125	100	50	6.3Vct@2A	---	---	2.50	2.75	3.06	2.00	1.69	.203 x .38	81.27
546-369BX	369BX	39	150-0-150	75	50	6.3Vct@2A	---	---	2.50	2.75	3.06	2.00	1.69	.203 x .38	73.14
546-369EX	369EX	45	190-0-190	65	50	6.3Vct@2.5A	---	---	2.50	2.75	3.06	2.00	1.69	.203 x .38	77.21
546-369GX	369GX	50	225-0-225	65	50	6.3Vct@2.5A	---	---	2.50	2.75	3.06	2.00	1.69	.203 x .38	73.14
546-369JX	369JX	50	250-0-250	60	50	6.3Vct@2.5A	---	---	2.50	2.75	3.06	2.00	1.69	.203 x .38	83.29
546-370AX	370AX	44	240-0-240	50	50	6.3Vct@2.5A	---	---	2.50	2.75	3.06	2.00	1.69	.203 x .38	78.63
546-370BX	370BX	55	275-0-275	50	50	5Vct@2A	6.3Vct@2A	---	2.50	3.00	3.06	2.00	1.94	.203 x .38	82.27
546-370FX	370FX	142	275-0-275	150	50	5Vct@3A	6.3Vct@5A	---	3.13	4.25	3.81	2.50	2.94	.203 x .38	121.89
546-370HX	370HX	180	275-0-275	200	50	5Vct@3A	6.3Vct@6A	---	3.13	4.25	3.81	2.50	2.94	.203 x .38	138.97
546-372BX	372BX	98	300-0-300	100	50	5Vct@2A	6.3Vct@3A	---	3.13	3.50	3.81	2.50	2.19	.203 x .38	107.67
546-372FX	372FX	150	300-0-300	150	50	5Vct@3A	6.3Vct@5A	---	3.13	4.25	3.81	2.50	2.94	.203 x .38	124.34
546-372JX	372JX	243	300-0-300	250	50	5Vct@4A	6.3Vct@8A	---	3.75	4.50	4.56	3.00	3.34	.203 x .38	149.95
546-373BX	373BX	187	350-0-350	175	50	5Vct@3A	6.3Vct@5A	---	3.75	4.00	4.56	3.00	2.81	.203 x .38	128.01
546-373X	373X	125	350-0-350	110	50	5Vct@2A	6.3Vct@4A	---	3.13	3.75	3.81	2.50	2.44	.203 x .38	119.74
546-374BX	374BX	200	375-0-375	175	50	5Vct@3A	6.3Vct@6A	---	3.75	4.00	4.56	3.00	2.81	.203 x .38	137.15
546-378CX	378CX	465	400-0-400	465	50	6.3Vct@6A	---	---	4.38	6.00	5.50	3.50	3.54	.203 x .38	186.52
546-378X	378X	237	400-0-400	200	50	5Vct@3A	6.3Vct@6A	---	3.75	3.06	4.56	3.00	3.06	.203 x .38	173.72



LINE ISOLATION PLUG & RECEPTACLE TRANSFORMERS

Features:

- Primary 115VAC, 50/60Hz, Secondary 115VAC
- Provides circuit isolation
- Electrostatic shield between primary and secondary
- Standard 3-wire, grounded plug and receptacle
- Hi-Pot tested to 2 KV RMS
- Circuit breaker in primary
- Input (primary) connected to 5 foot long cord and standard North American plug (NEMA 5-15P)
- Output (secondary) connected to 1 foot long 3-wire, standard North American grounded receptacle (NEMA 5-15R)
- North American Mark of Safety - C UL and UL listed



For quantities of 50 and up, call for quote.

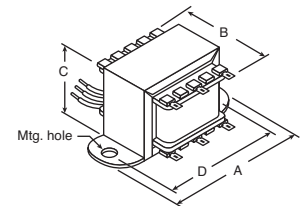
MOUSER STOCK NO.	Hammond Part No.	Cap. VA	Dimension: in.					Price Each		
			A	B	C	D	E	1	5	10
546-171A	171A	100	3.80	5.06	4.68	3.00	3.38	101.73	86.07	79.92
546-171B	171B	200	3.80	5.56	4.68	3.00	3.88	110.69	93.67	86.97
546-171C	171C	300	3.80	6.06	4.68	3.00	4.38	128.88	109.05	101.26
546-171E	171E	500	3.80	7.06	4.68	3.00	5.38	181.91	153.93	142.94
546-171F	171F	750	4.40	8.70	5.39	3.50	6.78	209.67	177.41	164.74
546-171G	171G	1000	5.28	7.75	6.38	4.25	4.38	284.42	240.68	223.48



UNIVERSAL SINGLE ENDED OR PUSH-PULL OUTPUT TRANSFORMERS

Features:

- Designed for general purpose or replacement use in single ended or push-pull tube output circuits
- Open style with minimum 5" long primary leads, secondary solder lugs for convenient secondary connections
- Minimum frequency response 150Hz - 15kHz (± 1db max. ref 1kHz) @ full rated power
- Tables provided with each transformer listing 90 pre-calculated impedance ratios
- Primary impedances from 1,200 - 25,000Ω
- Secondary impedances from 1.5 - 15Ω



For quantities of 50 and up, call for quote.

MOUSER STOCK NO.	Hammond Part No.	Audio Watts	Max. DC Bias	Dimension: in.				Mtg. Hole	Price Each		
				A	B	C	D		1	5	10
546-125A	125A	3	25	2.06	1.25	1.19	1.75	.187	44.48	37.65	34.96
546-125B	125B	5	45	2.38	1.38	1.38	2.00	.187	40.69	34.42	31.97
546-125C	125C	8	60	2.81	1.50	1.69	2.38	.187	34.34	29.06	27.00
546-125D	125D	10	70	3.25	1.75	2.00	2.81	.187	39.84	33.71	31.31
546-125E	125E	15	80	3.69	2.00	2.31	3.13	.187	49.31	41.74	38.76

