

VISHAY Optocouplers

RoHS Compliant This product is RoHS compliant.



◆ Surface Mount Device



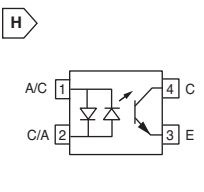
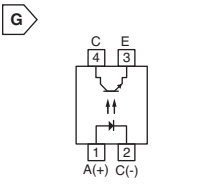
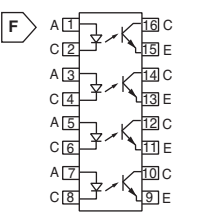
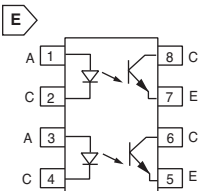
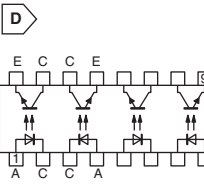
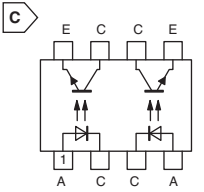
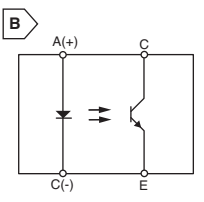
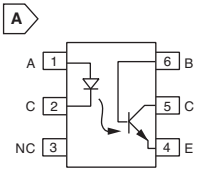
VISHAY PHOTO TRANSISTOR OUTPUT

Safety Standards:

- UL = UL Recognized (UL File No: E76222)
- UL/VDE = UL Recognized (E76222) & VDE Recognized
- UL/BSI/VDE = UL Recognized (E76222), BSI & VDE Recognized

MOUSER STOCK NO.		Fig.	Package	Safety Standard	IF (mA)	VCEO (max) (V)	VEBO (max) (V)	Rise and Fall Times Typ. (μs)	Isolation Voltage (VRMS)	Current Transfer Ratio (Min./Typ./Max.) (%)	Price Each			
Mfr.	Mfr. Part Number										1	100	500	1000
78—4N25	A	DIP-6	UL	60	70	7.0	2.0/2.0	5.3kV	20/50/----	.21	.17	.142	.13	
78—4N26	A	DIP-6	UL	60	70	7.0	2.0/2.0	5.3kV	20/50/----	.28	.24	.20	.183	
78—4N27	A	DIP-6	UL	60	70	7.0	2.0/2.0	5.3kV	10/30/----	.28	.24	.20	.183	
78—4N28	A	DIP-6	UL	60	70	7.0	2.0/2.0	5.3kV	10/30/----	.21	.17	.142	.13	
78—4N35	A	DIP-6	UL	60	70	7.0	10/10	5.3kV	40/50/----	.21	.17	.142	.13	
78—4N36	A	DIP-6	UL	60	70	7.0	10/10	5.3kV	40/50/----	.28	.24	.20	.183	
78—4N37	A	DIP-6	UL	60	70	7.0	10/10	5.3kV	40/50/----	.28	.24	.20	.183	
782—4N38	A	DIP-6	UL	60	70	7.0	10/10	5.3kV	----/30/----	.29	.24	.20	.18	
782—4N38A	A	DIP-6	UL	60	70	7.0	10/10	5.3kV	----/30/----	.38	.30	.25	.22	
782—H11A1	A	DIP-6	UL/BSI/CSA	60	70	7.0	3.0/3.0	5.3kV	50/----/----	.44	.37	.298	.264	
782—H11A2	A	DIP-6	UL/BSI/CSA	60	70	7.0	3.0/3.0	5.3kV	20/----/----	.46	.37	.30	.27	
782—H11A3	A	DIP-6	UL/BSI/CSA	60	70	7.0	3.0/3.0	5.3kV	20/----/----	.44	.37	.298	.264	
782—H11A4	A	DIP-6	UL/BSI/CSA	60	70	7.0	3.0/3.0	5.3kV	10/----/----	.46	.37	.30	.27	
782—H11A5	A	DIP-6	UL/BSI/CSA	60	70	7.0	3.0/3.0	5.3kV	30/----/----	.46	.37	.30	.27	

For quantities of 2000 and up, call for quote.



VISHAY PHOTO TRANSISTOR OUTPUT



MOUSER STOCK NO.		Fig.	Package	Safety Standard	IF (mA)	VCEO (max) (V)	VECO (max) (V)	Rise and Fall Times Typ. (μs)	Isolation Voltage (VRMS)	Current Transfer Ratio (Min./Typ./Max.) (%)	Price Each			
Mfr.	Mfr. Part Number										1	100	500	1000
782—CQY80N	A	DIP-6	UL/BSI/VDE	60	32	7.0	7.0/6.7	3.75kV	50/90/----	.30	.25	.21	.187	
782—CQY80NG	A	DIP-6	UL/BSI/VDE	60	32	7.0	7.0/6.7	3.75kV	50/90/----	.30	.25	.21	.187	
78—CNY64	B	4-Pin	UL/VDE	75	32	7.0	2.4/2.7	8.2kV	50/----/300	1.62	1.35	1.11	.885	
78—CNY65	B	4-Pin	UL/VDE	75	32	7.0	2.4/2.7	8.2kV	50/----/300	1.62	1.35	1.11	.914	
782—CNY65A	B	4-Pin	UL/VDE	75	32	7.0	2.4/2.7	8.2kV	63/----/125	1.70	1.42	1.17	.963	
782—CNY65B	B	4-Pin	UL/VDE	75	32	7.0	2.4/2.7	8.2kV	100/----/200	1.76	1.47	1.21	.995	
78—CNY66	B	4-Pin	UL/VDE	75	32	7.0	2.4/2.7	8.2kV	50/----/300	2.82	2.25	1.86	1.63	
782—CNY74-2H	C	DIP-8	UL	60	70	7.0	3.0/4.7	5.0kV	60/120/----	.61	.51	.42	.37	
782—CNY74-4H	D	DIP-16	UL	60	70	7.0	3.0/4.7	5.0kV	60/120/----	1.22	1.02	.838	.665	
782—CNY75B	A	DIP-6	UL/BSI/VDE	60	90	7.0	----/----	3.75kV	100/----/200	.30	.25	.21	.187	
782—ILD621GB	E	DIP-8	UL/BSI	60	----	70.0	2.0/2.0	5.3kV	100/200/600	1.22	1.02	.766	.689	
782—ILQ621	F	DIP-16	UL/BSI	60	----	70.0	2.0/2.0	5.3kV	50/80/600	2.31	1.94	1.33	1.30	
782—ILQ621GB	F	DIP-16	UL/BSI	60	----	70.0	2.0/2.0	5.3kV	100/200/600	2.39	1.78	1.42	1.35	
782—K817P	G	DIP-4	UL/CSA	60	70	7.0	3.0/4.7	5.0kV	50/----/600	.22	.19	.16	.14	
782—K847PH	F	DIP-16	UL/CSA	60	70	7.0	3.0/4.7	5.0kV	50/----/600	.97	.81	.67	.59	
782—MCT6H	C	DIP-8	UL	60	70	7.0	3.0/4.7	5.0kV	60/120/----	.61	.51	.49	.48	
◆ 782—SFH6106-3	G	SMD-4	UL/BSI/CSA	60	70	7.0	2.0/2.0	5.3kV	100/----/200	.61	.51	.41	.366	
782—SFH610A-2	G	DIP-4	UL/BSI/CSA	60	70	7.0	2.0/2.0	5.3kV	63/----/125	.61	.51	.415	.366	
782—SFH610A-3	G	DIP-4	UL/BSI/CSA	60	70	7.0	2.0/2.0	5.3kV	100/----/200	.61	.51	.415	.366	
782—SFH610A-4	G	DIP-4	UL/BSI/CSA	60	70	7.0	2.0/2.0	5.3kV	160/----/320	.61	.51	.415	.366	
◆ 78—SFH6156-2T	G	SMD-4	UL	60	70	7.0	2.0/2.0	5.3kV	63/----/125	.37	.30	.247	.238	
◆ 782—SFH6156-3T	G	SMD-4	UL	60	70	7.0	2.0/2.0	5.3kV	100/----/200	.37	.30	.247	.238	
◆ 782—SFH6156-4T	G	SMD-4	UL	60	70	7.0	2.0/2.0	5.3kV	160/----/320	.46	.39	.315	.278	
782—SFH615A-2	G	DIP-4	UL	60	70	7.0	2.0/2.0	5.3kV	63/----/125	.41	.35	.282	.249	
782—SFH615A-3	G	DIP-4	UL	60	70	7.0	2.0/2.0	5.3kV	100/----/200	.44	.35	.29	.25	
782—SFH615A-4	G	DIP-4	UL	60	70	7.0	2.0/2.0	5.3kV	160/----/320	.41	.35	.282	.249	
◆ 782—SFH6186-2T	G	SMD-4	UL/CSA	60	55	7.0	3.5/5.0	5.3kV	63/----/125	.67	.53	.44	.399	
782—SFH6186-3T	G	SMD-4	UL/CSA	60	55	7.0	3.5/5.0	5.3kV	100/----/200	.67	.53	.44	.39	
782—SFH6186-4T	G	SMD-4	UL/CSA	60	55	7.0	3.5/5.0	5.3kV	160/----/320	.67	.53	.44	.399	
◆ 782—SFH6186-5T	G	SMD-4	UL/CSA	60	55	7.0	3.5/5.0	5.3kV	250/----/500	.67	.53	.44	.399	
782—SFH618A-2	G	DIP-4	UL/CSA	60	55	7.0	3.5/5.0	5.3kV	63/----/125	.58	.49	.397	.351	
782—SFH618A-3	G	DIP-4	UL/CSA	60	55	7.0	3.5/5.0	5.3kV	100/----/200	.58	.49	.397	.351	
782—SFH618A-4	G	DIP-4	UL/CSA	60	55	7.0	3.5/5.0	5.3kV	160/----/320	.58	.49	.397	.351	
782—SFH618A-5	G	DIP-4	UL/CSA	60	55	7.0	3.5/5.0	5.3kV	250/----/500	.58	.49	.397	.351	
◆ 782—SFH6206-2	H	SMD-4	UL/BSI/CSA	60	70	7.0	2.0/2.0	5.3kV	63/----/200	.48	.41	.34	.30	
782—SFH620A-2	H	DIP-4	UL/BSI/CSA	60	70	7.0	2.0/2.0	5.3kV	63/----/200	.48	.41	.34	.302	
782—SFH620A-3	H	DIP-4	UL/BSI/CSA	60	70	7.0	2.0/2.0	5.3kV	100/----/320	.48	.41	.34	.302	
◆ 782—SFH6286-3T	H	SMD-4	UL	50	55	7.0	3.5/5.0	5.3kV	100/----/320	.77	.65	.54	.47	
◆ 782—SFH6286-4T	H	SMD-4	UL	50	55	7.0	3.5/5.0	5.3kV	160/----/500	.82	.65	.54	.474	
782—SFH628A-3	H	DIP-4	UL	50	55	7.0	3.5/5.0	5.3kV	100/----/320	.73	.61	.51	.45	
782—SFH628A-4	H	DIP-4	UL	50	55	7.0	3.5/5.0	5.3kV	160/----/500	.73	.61	.51	.45	
78—TCDT1120	C	DIP-6	UL/BSI/VDE	60	90	7.0	3.0/3.7	3.75kV	10/----/----	.31	.26	.22	.19	
78—TCDT1122	C	DIP-6	UL/BSI/VDE	60	90	7.0	3.0/3.7	3.75kV	15/----/----	.35	.28	.23	.20	
782—TCET1101	D	DIP-4	UL/BSI/CSA/VDE	60	70	7.0	3.0/4.7	5.0kV	40/----/80	.25	.22	.18	.16	
782—TCET1102	D	DIP-4	UL/BSI/CSA/VDE	60	70	7.0	3.0/4.7	5.0kV	63/----/125	.25	.22	.18	.16	
782—TCET1103	D	DIP-4	UL/BSI/CSA/VDE	60	70	7.0	3.0/4.7	5.0kV	100/----/200	.25	.22	.18	.16	
782—TCET1104	D	DIP-4	UL/BSI/CSA/VDE	60	70	7.0	3.0/4.7	5.0kV	160/----/320	.29	.23	.19	.17	
782—TCET1106	D	DIP-4	UL/BSI/CSA/VDE	60	70	7.0	3.0/4.7	5.0kV	100/----/300	.27	.22	.18	.16	
782—TCET1107	D	DIP-4	UL/BSI/CSA/VDE	60	70	7.0	3.0/4.7	5.0kV	80/----/160	.27	.22	.18	.16	
◆ 782—TCLT1000	D	SOP-4L	UL/BSI/CSA/VDE	60	70	7.0	3.0/4.7	5.0kV	50/----/600	.37	.31	.26	.23	
◆ 782—TCLT1002	D	SOP-4L	UL/BSI/CSA/VDE	60	70	7.0	3.0/4.7	5.0kV	63/----/125	.37	.31	.26	.23	
◆ 782—TCLT1003	D	SOP-4L	UL/BSI/CSA/VDE	60	70	7.0	3.0/4.7	5.0kV	100/----/200	.37	.31	.26	.23	
◆ 782—TCLT1005	D	SOP-4L	UL/BSI/CSA/VDE	60	70	7.0	3.0/4.7	5.0kV	50/----/150	.37	.31	.26	.23	
◆ 782—TCLT1006	D	SOP-4L	UL/BSI/CSA/VDE	60	70	7.0	3.0/4.7	5.0kV	100/----/300	.37	.31	.26	.23	
◆ 782—TCLT1007	D	SOP-4L	UL/BSI/CSA/VDE	60	70	7.0	3.0/4.7	5.0kV	80/----/160	.39	.31	.26	.23	
◆ 782—TCLT1100	D	SOP-4L	UL/BSI/CSA/VDE	60	70	7.0	3.0/4.7	5.0kV	130/----/260	.39	.31	.26	.23	
◆ 782—TCMT1108	D	SO-4L	UL	60	70	7.0	3.0/4.7	3.75kV	50/----/600	.36	.30	.25	.22	
◆ 782—TCMT1102	D	SO-4L	UL	60	70	7.0	3.0/4.7	3.75kV	53/----/125	.36	.30	.25	.22	
◆ 782—TCMT1103	D	SO-4L	UL	60	70	7.0	3.0/4.7	3.75kV	100/----/200	.36	.30	.25	.22	
◆ 782—TCMT1104	D	SO-4L	UL	60	70	7.0	3.0/4.7	3.75kV	160/----/320	.36	.30	.25	.22	
◆ 782—TCMT1106	D	SO-4L	UL	60	70	7.0	3.0/4.7	3.75kV	100/----/300	.36	.30	.25	.22	
◆ 782—TCMT1107	D	SO-4L	UL	60	70	7.0	3.0/4.7	3.75kV	80/----/160	.36	.30	.25	.22	
◆ 782—TCMT1108	D	SO-4L	UL	60	70	7.0	3.0/4.7	3.75kV	130/----/360	.36	.30	.25	.22	
◆ 782—TCMT1109	D	SO-4L	UL	60	70	7.0	3.0/4.7	3.75kV	200/----/400	.36	.30	.25	.22	
◆ 78—SFH690AT	G	SOP-4	UL/BSI/CSA	50	70	7.0	3.0/4.0	3.75kV	50/----/150	.41	.35	.282	.249	
◆ 782—SFH690BT	G	SOP-4	UL/BSI/CSA	50	70	7.0	3.0/4.0	3.75kV	100/----/300	.41	.35	.282	.249	