

# PHOENIX CONTACT DIN Rail Circuit Breakers



## EC-E ELECTRONIC CIRCUIT BREAKERS

### Features:

- Selective load protection prevents complete system shutdown
- N/O or N/C signal contacts for remote signaling
- Manual on/off side switch
- Protection for capacitive circuits up to 20,000  $\mu$ F

### Specifications:

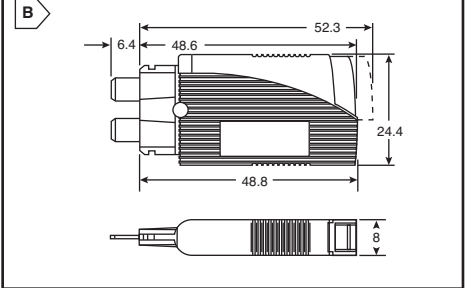
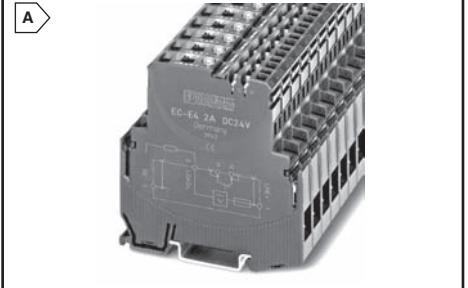
- 12.5mm width
- Class 1, Div 2 rating
- Bridging available for line (+) and return (-) for
- Nickel- and tin-plated copper alloy components
- Color: Black



For quantities of 25 and up, call for quote.

MOUSER STOCK NO.	Fig.	Phoenix Type	Nominal Current	Nominal Voltage	Contact Type	Price Each		
						1	5	10
651-0903023	A	EC-E1 1A	1A	24VDC	Normally Open	89.66	83.87	80.00
651-0903024	A	EC-E1 2A	2A	24VDC	Normally Open	89.66	83.87	80.00
651-0903030	A	EC-E1 10A	10A	24VDC	Normally Open	95.26	89.11	85.00
651-0903032	A	EC-E4 1A	1A	24VDC	Normally Closed	89.66	83.87	80.00
651-0903033	A	EC-E4 2A	2A	24VDC	Normally Closed	89.66	83.87	80.00
651-0903038	A	EC-E4 10A	10A	24VDC	Normally Closed	95.26	89.11	85.00
651-0903042	A	EC-E 1A	1A	24VDC	Remote Resettable	101.98	95.40	91.00
651-0903043	A	EC-E 2A	2A	24VDC	Remote Resettable	101.98	95.40	91.00
651-0903048	A	EC-E 10A	10A	24VDC	Remote Resettable	107.59	100.65	96.00

DIMENSIONS: mm



## THERMAL MINIATURE CIRCUIT BREAKERS, TCP

### TCP Pushbutton Circuit Breakers

### Features:

- Can be switched back on after tripping
- Can be used for switching purposes
- Plugs into DIN Rail terminal blocks (listed below)
- Values can be swapped quickly for testing
- No searching for replacement fuses
- Pluggable Circuit Breakers

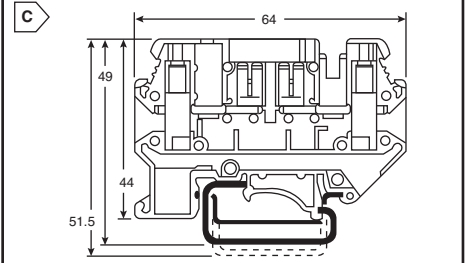
### Specifications:

- Rated Surge Voltage: 2.5 kV
- Max Amperage: 0.25-4A Types is 6x Rated Current  
6-10A Types is 8x Rated Current
- Contamination Class: 2
- Color: Black



For quantities of 25 and up, call for quote.

MOUSER STOCK NO.	Fig.	Phoenix Type	Nominal Current	Nominal Voltage	Operating Temperature	Price Each		
						1	5	10
651-0712152	B	TCP 0.5	.5A	250VAC/ 65VDC	-20° to 60°C	11.91	11.15	10.65
651-0712194	B	TCP 1	1A	250VAC/ 65VDC	-20° to 60°C	11.91	11.15	10.65
651-0712217	B	TCP 2	2A	250VAC/ 65VDC	-20° to 60°C	11.91	11.15	10.65
651-0712233	B	TCP 3	3A	250VAC/ 65VDC	-20° to 60°C	11.91	11.15	10.65
651-0712259	B	TCP 4	4A	250VAC/ 65VDC	-20° to 60°C	11.91	11.15	10.65
651-0712275	B	TCP 6	6A	250VAC/ 65VDC	-20° to 60°C	11.91	11.15	10.65
651-0712314	B	TCP 10	10A	250VAC/ 65VDC	-20° to 60°C	11.91	11.15	10.65



### TCP Terminal Blocks

### Features:

- Mounts to standard 35mm DIN Rails
- Use with TCP push button circuit breakers
- Can be used with Automotive Type Fuses
- Bridgeable

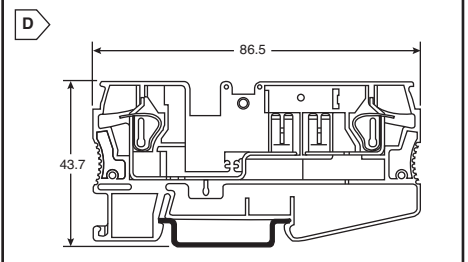
### Specifications:

- Color: Black
- Max Current: 30A
- Max Voltage: 300V



For quantities of 25 and up, call for quote.

MOUSER STOCK NO.	Fig.	Phoenix Type	Terminal Width	Connection Type	AWG	Price Each		
						1	5	10
651-3118203	C	UK 6-FSI/C	8.2mm	Screw-Clamp	26-8	7.15	6.70	6.39
651-3036372	D	ST 4-FSI/C	8.2mm	Spring-Cage	24-10	4.43	4.15	3.96
651-1052002	-	ZB 8:Unprinted		White Unprinted Labels (1 strip of 10)		1.03	.92	.87



## THERMO MAGNETIC CIRCUIT BREAKERS

### TMC1 Thermo Magnetic Circuit Breaker - Switch Type

### Features:

- Direct DIN Rail Mount (Universal Mounting Foot)
- 1-Position main current path with 1 N/O status contact
- Screw Clamp Connection

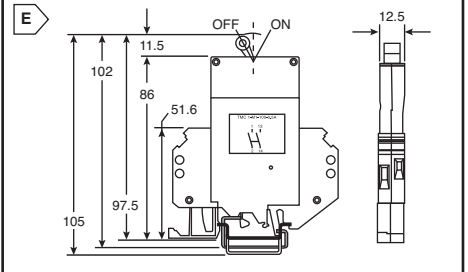
### Specifications:

- Housing Width: 12.5mm
- AWG: 24-10
- Typical Life: 10,000 Operations
- Color: Black



For quantities of 25 and up, call for quote.

MOUSER STOCK NO.	Fig.	Phoenix Type	Nominal Current	Max Voltage	Operating Temperature	Price Each		
						1	5	10
651-0914400	E	TMC 1 M1 100 0.5A	.5A	250VAC/ 65VDC	-10° to 60°C	60.35	56.52	53.95
651-0914439	E	TMC 1 M1 100 1.0A	1A	250VAC/ 65VDC	-10° to 60°C	60.35	56.52	53.95
651-0914455	E	TMC 1 M1 100 2.0A	2A	250VAC/ 65VDC	-10° to 60°C	60.35	56.52	53.95
651-0914497	E	TMC 1 M1 100 5.0A	5A	250VAC/ 65VDC	-10° to 60°C	60.35	56.52	53.95
651-0914523	E	TMC 1 M1 100 10.0A	10A	250VAC/ 65VDC	-10° to 60°C	60.35	56.52	53.95
651-0915473	E	TMC 1 M1 100 15.0A	15A	250VAC/ 65VDC	-10° to 60°C	60.35	56.52	53.95



### TMC42 Thermo Magnetic Circuit Breaker - Pushbutton Type

### Features:

- Direct DIN Rail Mount (Universal Mounting Foot)
- Screw Clamp Connection

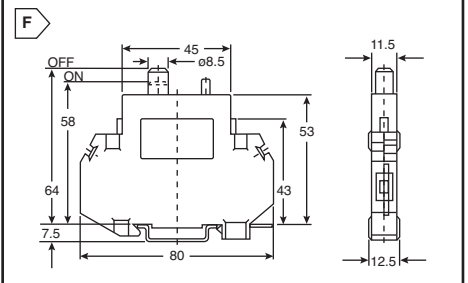
### Specifications:

- Housing Width: 12.5mm
- AWG: 24-10
- Typical Life: 5000 Operations
- Color: Black



For quantities of 25 and up, call for quote.

MOUSER STOCK NO.	Fig.	Phoenix Type	Nominal Current	Max Voltage	Operating Temperature	Price Each		
						1	5	10
651-5650108	F	TMC 42-01-1.0A	1A	250VAC/ 80VDC	-10° to 60°C	40.23	37.68	35.97
651-5600314	F	TMC 42-01-2.0A	2A	250VAC/ 80VDC	-10° to 60°C	40.23	37.68	35.97
651-5531082	F	TMC 42-01-5.0A	5A	250VAC/ 80VDC	-10° to 60°C	40.23	37.68	35.97
651-5650121	F	TMC 42-01-10A	10A	250VAC/ 80VDC	-10° to 60°C	40.23	37.68	35.97
651-5600310	F	TMC 42-01-15A	15A	250VAC/ 80VDC	-10° to 60°C	40.23	37.68	35.97



Phoenix Contact

Circuit Breakers