

Step Motors and Drives

APPLIED MOTION ST STEPPER DRIVES

A performance step drive with advanced current control, anti-resonance, torque ripple smoothing and microstep emulation.
 • Microstep resolution: 200 - 51,200 steps per revolution.



Specifications for S Series:

- Pulse & Direction
- CW/CCW Pulse
- A/B Quadrature
- Velocity (Oscillator) mode
- Host commands (SCL compatible)
- SiNet Hub compatible
- ST Configurator software for setup

Specifications for Si Series:

- Stand-alone Operation
- Q Programmer for complex motion
- Conditional Processing
- Math Functions
- Multi-tasking
- Register Manipulation
- Encoder Following
- "Generic" HMI compatibility

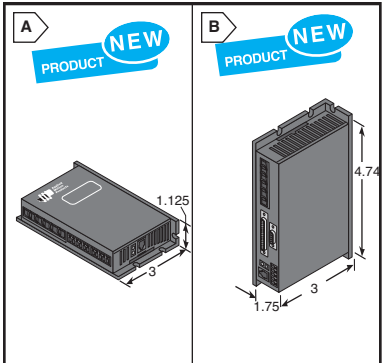
Protection:

- Over-Voltage
- Under-Voltage
- Over-Temp
- Motor Shorts
- Motor Open Phase

Recommended Stepper Motors for ST5: HT17-068, HT17-071, HT23-394 or HT23-401
 Recommended Stepper Motors for ST10: HT34-485, HT34-486, or HT34-487

For quantities of 5 and up, call for quote.

MOUSER STOCK NO.	Applied Motion Part No.	Fig.	Current Control at 20 KHz	Power Supply Required	Input Voltage (VDC)	Output Current in 0.01 Amp Increments	Price Each
834-ST5-S	ST5-S-NN	A	4 state PWM	External 24-48VDC	18 - 53	0.1 - 5.0 amps	295.00
834-ST5-SI	ST5-SI-NN	B	4 state PWM	External 24-48VDC	18 - 53	0.1 - 5.0 amps	450.00
834-ST10-S-NN	ST10-S-NN	A	4 state PWM	External 24-80VDC	18 - 88	0.1 - 10.0 amps	391.05
834-ST10-SI-NN	ST10-SI-NN	B	4 state PWM	External 24-80VDC	18 - 88	0.1 - 10.0 amps	544.50



APPLIED MOTION STM SERIES: INTEGRATED MOTORS

The STM is a drive + motor unit, fusing step motor and drive technologies into a single device, offering savings on space, wiring and cost over conventional motor and drive solutions.

Protection:

- Over-Voltage
- Under-Voltage
- Over-Temp
- Motor Shorts
- Motor Open Phase

Specifications for S Series:

- Pulse & Direction
- CW/CCW Pulse
- A/B Quadrature
- Velocity (Oscillator) mode
- Host commands (SCL compatible)

- SiNet Hub compatible
- ST Configurator software for setup
- Microstep Resolution: 200 - 51,200 Steps

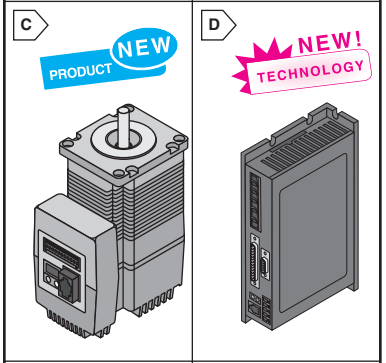
Features:

- Dynamic Current Control
- Anti-Resonance
- Torque Ripple Smoothing
- Microstep Emulation



For quantities of 5 and up, call for quote.

MOUSER STOCK NO.	Applied Motion Part No.	Fig.	Output Torque	Communication Interface	Input Voltage (VDC)	Dimensions (mm) "L"	Price Each
834-STM23S-2AN	STM23S-2AN	C	125 oz-in max	RS-232	12 - 70VDC	92.4	295.35
834-STM23S-3AN	STM23S-3AN	C	210 oz-in max	RS-232	12 - 70VDC	114.4	338.25



APPLIED MOTION SV SERIES: SERVO DRIVES AND MOTORS

A compact Servo drive with 3 Control options.

Protection:

- Over-Voltage
- Under-Voltage
- Over-Temp
- Motor Shorts
- Motor Open Phase

Specifications for S Series:

- Pulse & Direction
- CW/CCW Pulse
- A/B Quadrature
- Velocity (Oscillator) mode
- Analog +/-10V
- ASCII streaming host commands (SCL)
- SiNet Hub compatible

- QuickTuner software for setup
- Si Programmer with built-in QuickTuner
- Point-and-click indexing software
- User friendly GUI
- I/O and motion programming
- MMI-01 compatibility

Features:

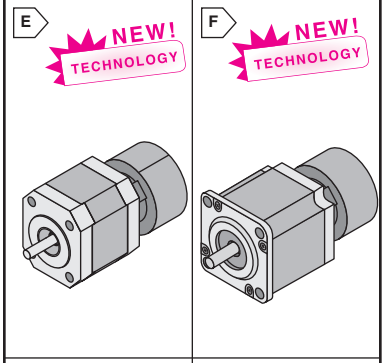
- Digital Servo Control
- Advanced Current Control
- Flexible Control Options
- Programmable Versions



For quantities of 5 and up, call for quote.

Servo Drives

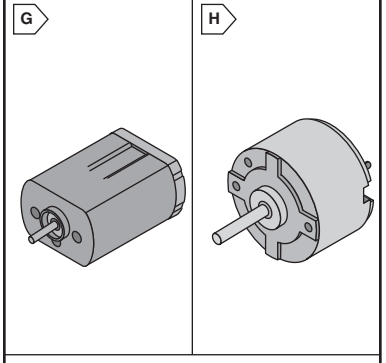
MOUSER STOCK NO.	Applied Motion Part No.	Fig.	Control Type	Input Voltage (VDC)	Output Current	Price Each
834-SV7-S-AE	SV7-S-AE	D	Step & Direction	24-80	7.0A rms cont, 14.0A rms peak	391.05
834-SV7-SI-AE	SV7-SI-AE	D	Programmable	24-80	7.0A rms cont, 14.0A rms peak	589.05



Servo Motors

For quantities of 5 and up, call for quote.

MOUSER STOCK NO.	Applied Motion Part No.	Fig.	Dimensions (mm) Length	NEMA	Rated Output (PR)	Rated Speed	Input Voltage (VDC)	Price Each
834-V0050-214-A-000	V0050-214-A-000	E	45	17	50W	5000 RPM	48	316.80
834-V0250-214-B-000	V0250-214-B-000	F	104	23	200W	3350 RPM	48	455.40



AUTOTROL DC MOTORS

Applications:

- Optical Equipment
- Monitoring Cameras
- Door Locks
- Fiber Optic Equipment

- HVAC Controls
- Incubators
- Point of Purchase Displays
- RV Roof Vent Actuators

Specifications:

- Shaft Diameter: 2.0 mm

- Time Clocks
- Recorders
- Printers
- Ticket Presenters



For quantities of 50 and up, call for quote.

MOUSER STOCK NO.	Autotrol Part No.	Fig.	Rated Voltage (VDC)	Rated Torque (mNm)	Rated Current (mA)	Rated Speed (RPM)	Motor Diameter (mm)	Motor Length (mm)	Shaft Length (mm)	Price Each			
										1	5	10	25
Size 24mm													
708-052-0075AD	052-0075AD	G	12	0.08	200	4250	24.2	30.5	6.8	30.32	26.93	25.94	25.14
Size 32mm													
708-052-0010AD	052-0010AD	H	12	0.06	200	3900	32	20.5	11	32.66	29.01	27.94	27.08
Size 36mm													
708-052-4964AD	052-4964AD	I	12	0.02	70	3500	35.8	28	6	41.58	37.70	35.18	34.52
708-052-4707AD	052-4707AD	I	6	0.02	70	1800	35.8	28	6	53.25	47.29	45.54	44.14
708-052-4742AD	052-4742AD	I	24	0.02	50	4000	35.8	28	6	53.25	47.29	45.54	44.14
708-052-1674AD	052-1674AD	I	6	0.02	80	2200	36	28	6.2	44.05	39.12	37.67	36.51
708-052-1869AD	052-1869AD	I	12	0.02	80	3700	36	26	6.2	49.48	43.94	42.32	41.01

