

HARTING Heavy Duty Han® Power Accessories

HEAVY DUTY HAN® POWER ACCESSORIES

Crimp Contacts For Inserts

• RoHS Compliant per HARTING documentation



For quantities of 100 and up, call for quote.

MOUSER STOCK NO.	HARTING Part No.	Fig.	Contact Type	Wire Gauge		Price Each			
				mm ²	AWG	1	10	25	50
16A Contacts For Han® Insert Series E, A, EE, Q, Han E Modules, and Inserts									
617-09-33-000-6121	09 33 000 6121	A	Male	0.5	20	.44	.40	.37	.35
617-09-33-000-6105	09 33 000 6105	A	Male	1	18	.44	.40	.37	.35
617-09-33-000-6104	09 33 000 6104	A	Male	1.5	16	.44	.40	.37	.35
617-09-33-000-6102	09 33 000 6102	A	Male	2.5	14	.44	.40	.37	.35
617-09-33-000-6107	09 33 000 6107	A	Male	4	12	.44	.40	.37	.35
617-09-33-000-6220	09 33 000 6220	B	Female	0.5	20	.44	.40	.37	.35
617-09-33-000-6205	09 33 000 6205	B	Female	1	18	.44	.40	.37	.35
617-09-33-000-6204	09 33 000 6204	B	Female	1.5	16	.44	.40	.37	.35
617-09-33-000-6202	09 33 000 6202	B	Female	2.5	14	.44	.40	.37	.35
617-09-33-000-6207	09 33 000 6207	B	Female	4	12	.44	.40	.37	.35
40A Contacts for Han® C Modules and Inserts									
617-09-32-000-6104	09 32 000 6104	A	Male	1.5	16	2.37	2.14	2.02	1.90
617-09-32-000-6105	09 32 000 6105	A	Male	2.5	14	2.37	2.14	2.02	1.90
617-09-32-000-6107	09 32 000 6107	A	Male	4	12	2.37	2.14	2.02	1.90
617-09-32-000-6108	09 32 000 6108	A	Male	6	10	2.37	2.14	2.02	1.90
617-09-32-000-6204	09 32 000 6204	B	Female	1.5	16	3.49	3.14	2.96	2.78
617-09-32-000-6205	09 32 000 6205	B	Female	2.5	14	3.49	3.14	2.96	2.78
617-09-32-000-6207	09 32 000 6207	B	Female	4	12	3.49	3.14	2.96	2.78
617-09-32-000-6208	09 32 000 6208	B	Female	6	10	3.49	3.14	2.96	2.78
10A Contacts For Han® Insert Series D, DD, Han DD Modules, and Inserts									
617-09-15-000-6104	09 15 000 6104	C	Male	.14 - .37	26-22	.82	.74	.70	.66
617-09-15-000-6103	09 15 000 6103	C	Male	0.5	20	.82	.74	.70	.66
617-09-15-000-6102	09 15 000 6102	C	Male	1	18	.82	.74	.70	.66
617-09-15-000-6101	09 15 000 6101	C	Male	1.5	16	.82	.74	.70	.66
617-09-15-000-6106	09 15 000 6106	C	Male	2.5	14	.82	.74	.70	.66
617-09-15-000-6204	09 15 000 6204	D	Female	.14 - .37	26-22	.82	.74	.70	.66
617-09-15-000-6203	09 15 000 6203	D	Female	0.5	20	.82	.74	.70	.66
617-09-15-000-6202	09 15 000 6202	D	Female	1	18	.82	.74	.70	.66
617-09-15-000-6201	09 15 000 6201	D	Female	1.5	16	.82	.74	.70	.66
617-09-15-000-6206	09 15 000 6206	D	Female	2.5	14	.82	.74	.70	.66

Crimp Contact Tools

For quantities of 5 and up, call for quote.

MOUSER STOCK NO.	HARTING Part No.	Fig.	Han® Insert Series	Description	Price Each
HARTING Crimp Tool					
617-09-99-000-0021	09 99 000 0021	E	D, E	Standard Crimp Tool for 16A and 10A Contacts	217.34
617-09-99-000-0110	09 99 000 0110	F	C, D, E	Crimp Tool for 26-12 AWG Contacts	734.69
Buchanan Crimp Tool					
617-09-99-000-0001	09 99 000 0001	G	All	MIL Type Crimp Tool for 16A and 10A Contacts	532.19
Depth Adjustment Gauge for Buchanan Crimp Tool					
617-09-99-000-0203	09 99 000 0203	H	D	Buchanan Depth Gauge for 26-24 AWG	45.58
Contact Locators for Buchanan Crimp Tool					
617-09-99-000-0310	09 99 000 0310	I	E	Buchanan Crimp Tool Locator for 16A Contacts	7.72
617-09-99-000-0311	09 99 000 0311	I	D	Buchanan Crimp Tool Locator for 10A Contacts	7.72
Crimp Contact Removal Tools					
617-09-99-000-0012	09 99 000 0012	J	DD, D	Removal Tool for 10A Contacts	73.67
617-09-99-000-0319	09 99 000 0319	K	EE	Removal Tool for 16A Contacts	29.51

Axial Screw Tool

For quantities of 5 and up, call for quote.

MOUSER STOCK NO.	HARTING Part No.	Fig.	Description	Price Each
Han® Modular Hexagonal Screw Driver				
617-09-99-000-0313	09 99 000 0313	L	Hexagonal Screw Driver SW 4	19.86

Metal IP68/NEMA 4X PG Cable Glands For Hoods

• RoHS Compliant per HARTING documentation



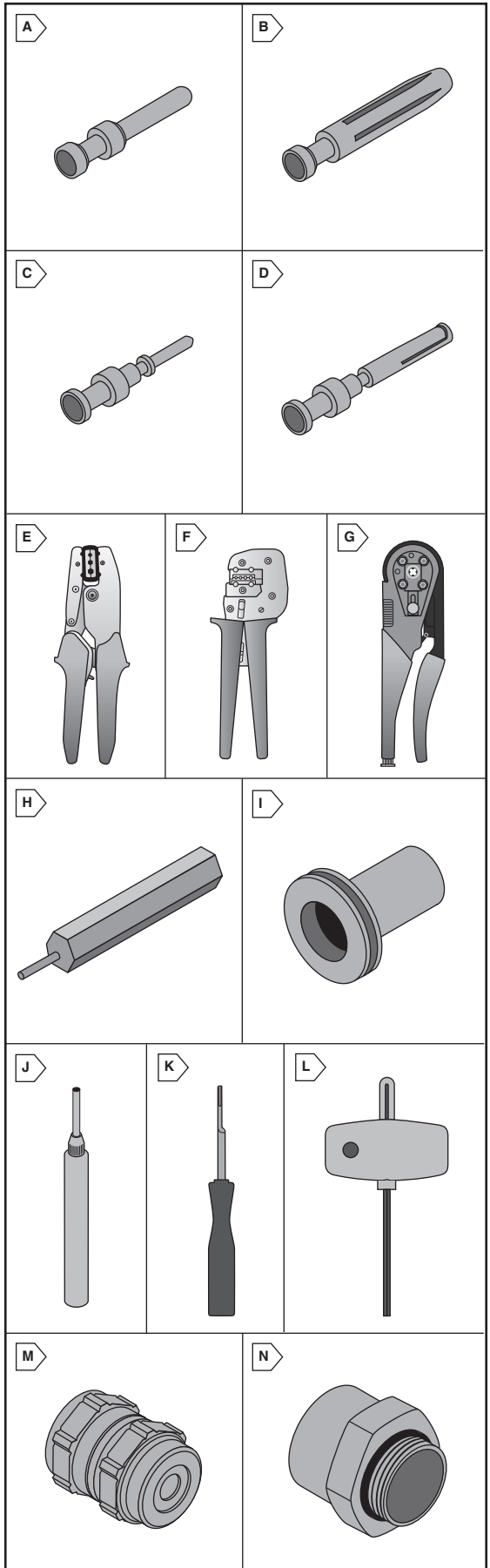
For quantities of 100 and up, call for quote.

MOUSER STOCK NO.	HARTING Part No.	Fig.	PG Size	Wrench Size	Cable Dia. (mm)	Price Each			
						1	10	25	50
617-09-00-000-5080	09 00 000 5080	M	11	20	5 - 8	11.50	10.35	9.77	9.20
617-09-00-000-5082	09 00 000 5082	M	11	20	7 - 10.5	11.20	10.08	9.52	8.96
617-09-00-000-5086	09 00 000 5086	M	16	24	6 - 9.5	16.54	14.88	14.06	13.23
617-09-00-000-5088	09 00 000 5088	M	16	24	9 - 13	17.52	15.76	14.89	14.01
617-09-00-000-5089	09 00 000 5089	M	16	24	11.5 - 15.5	15.58	14.03	13.25	12.47
617-09-00-000-5090	09 00 000 5090	M	21	30	7 - 10.5	31.46	28.32	26.73	25.17
617-09-00-000-5091	09 00 000 5091	M	21	30	9 - 13	24.90	22.40	21.16	19.91
617-09-00-000-5092	09 00 000 5092	M	21	30	11.5 - 15.5	23.18	20.86	19.70	18.54
617-09-00-000-5093	09 00 000 5093	M	21	30	14 - 18	24.70	22.22	20.99	19.76
617-09-00-000-5095	09 00 000 5095	M	29	40	17 - 21	50.38	45.33	42.83	40.31
617-09-00-000-5096	09 00 000 5096	M	29	40	20 - 25	36.32	32.69	30.87	29.06
617-09-00-000-5097	09 00 000 5097	M	29	40	24 - 28	44.18	39.77	37.55	35.34

PG To NPT Adapters

For quantities of 100 and up, call for quote.

MOUSER STOCK NO.	HARTING Part No.	Fig.	PG Size	Female NPT Thread	Price Each			
					1	10	25	50
617-73-00-000-5310	73 00 000 5310	N	11	1/2"	9.78	8.80	8.32	7.82
617-73-00-000-5312	73 00 000 5312	N	16	1/2"	8.86	7.97	7.54	7.09
617-73-00-000-5313	73 00 000 5313	N	21	1/2"	14.02	12.61	11.92	11.21
617-73-00-000-5314	73 00 000 5314	N	21	3/4"	13.00	11.70	11.05	10.39
617-73-00-000-5315	73 00 000 5315	N	29	1"	24.04	21.63	20.44	19.24



Rectangular Power
HARTING