

AMPHENOL Circular Connectors

Amphenol®

ECO|MATE CIRCULAR CONNECTORS, SERIES C16-M

RoHS Compliant This product is RoHS compliant.

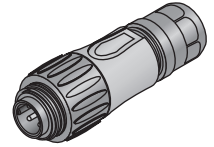
The Eco|mate Series is designed to have ease of operation using reduced dimensions while withstanding harsh conditions. This series is compatible and interchangeable with the well established C16-1 Series. The connector is primarily used for measuring and controlling applications such as control technology for engineering; ideal for green energy applications.

Features:

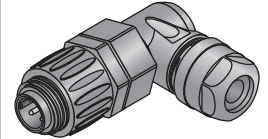
- Quick and easy assembly
- Vibration safe with non-sensitive screw locking
- Ergonomic coupling sleeve for better grip and safer handling
- Interchangeable with the C16-1 series
- Pre-loaded ground contact
- Screwed cable gland with clamping ring; threaded cable gland
- Other colors available. Please contact your sales representative.

Specifications:

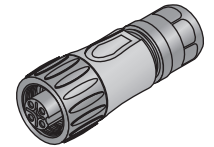
- Cable O.D.: 6 - 12.5mm
- Contact Plating: Silver
- IP Degree: IP65 / IP67 (DIN EN 60529)
- Temperature range: -40°C to +100°C
- Flammability: UL94V-0



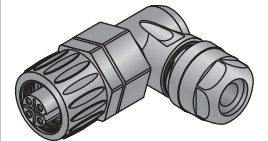
A



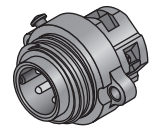
B



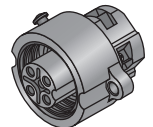
C



D



E



F

Circular Connectors
Amphenol

Cable Connectors

For quantities of 100 and up, call for quote.

MOUSER STOCK NO.	Amphenol Part No.	Fig.	No. of Contacts	Plating	Color	Termination Type	Voltage	Current	AWG Size	Price Each		
										1	10	50
Male, Straight with Clamping Ring												
523-C01620H00310010	C016 20H003 100 10	A	3 + PE	Silver	Blue	Screw	400V	16A	14	7.62	6.99	6.46
523-C01620H00310012	C016 20H003 100 12	A	3 + PE	Silver	Black	Screw	400V	16A	14	7.48	6.86	6.34
523-C01620H00320010	C016 20H003 200 10	A	3 + PE	Gold	Blue	Screw	400V	12A	14	11.37	10.43	9.63
523-C01620H00320012	C016 20H003 200 12	A	3 + PE	Gold	Black	Screw	400V	12A	14	11.37	10.43	9.63
523-C01630H00610010	C016 30H006 100 10	A	6 + PE	Silver	Blue	Solder	250V	10A	20	8.27	7.59	7.01
523-C01630H00610012	C016 30H006 100 12	A	6 + PE	Silver	Black	Solder	250V	10A	20	8.18	7.50	6.93
523-C01630H00620010	C016 30H006 200 10	A	6 + PE	Gold	Blue	Solder	250V	8A	20	11.74	10.84	10.07
523-C01630H00620012	C016 30H006 200 12	A	6 + PE	Gold	Black	Solder	250V	8A	20	12.79	11.74	10.84
Male, Straight with Internal Strain Relief												
523-C01620H00311010	C016 20H003 110 10	A	3 + PE	Silver	Blue	Screw	400V	16A	14	8.09	7.42	6.85
523-C01620H00311012	C016 20H003 110 12	A	3 + PE	Silver	Black	Screw	400V	16A	14	8.07	7.40	6.84
523-C01620H00321010	C016 20H003 210 10	A	3 + PE	Gold	Blue	Screw	400V	12A	14	12.11	11.11	10.26
523-C01620H00321012	C016 20H003 210 12	A	3 + PE	Gold	Black	Screw	400V	12A	14	12.11	11.11	10.26
523-C01630H00611010	C016 30H006 110 10	A	6 + PE	Silver	Blue	Solder	250V	10A	20	9.05	8.30	7.66
523-C01630H00611012	C016 30H006 110 12	A	6 + PE	Silver	Black	Solder	250V	10A	20	9.05	8.30	7.66
523-C01630H00621010	C016 30H006 210 10	A	6 + PE	Gold	Blue	Solder	250V	8A	20	13.51	12.40	11.45
523-C01630H00621012	C016 30H006 210 12	A	6 + PE	Gold	Black	Solder	250V	8A	20	13.51	12.40	11.45
Male, Right Angle with Clamping Ring												
523-C01620K00310010	C016 20K003 100 10	B	3 + PE	Silver	Blue	Screw	400V	16A	14	13.59	12.46	11.51
523-C01620K00310012	C016 20K003 100 12	B	3 + PE	Silver	Black	Screw	400V	16A	14	13.59	12.46	11.51
523-C01630K00610010	C016 30K006 100 10	B	6 + PE	Silver	Blue	Solder	250V	10A	20	14.29	13.11	12.11
523-C01630K00610012	C016 30K006 100 12	B	6 + PE	Silver	Black	Solder	250V	10A	20	14.29	13.11	12.11
Female, Straight with Clamping Ring												
523-C01620D00310010	C016 20D003 100 10	C	3 + PE	Silver	Blue	Screw	400V	16A	14	6.92	6.35	5.86
523-C01620D00310012	C016 20D003 100 12	C	3 + PE	Silver	Black	Screw	400V	16A	14	6.92	6.35	5.86
523-C01620D00320010	C016 20D003 200 10	C	3 + PE	Gold	Blue	Screw	400V	12A	14	13.08	12.00	11.08
523-C01620D00320012	C016 20D003 200 12	C	3 + PE	Gold	Black	Screw	400V	12A	14	13.08	12.00	11.08
523-C01630D00610010	C016 30D006 100 10	C	6 + PE	Silver	Blue	Solder	250V	10A	20	9.51	8.73	8.06
523-C01630D00610012	C016 30D006 100 12	C	6 + PE	Silver	Black	Solder	250V	10A	20	9.51	8.73	8.06
523-C01630D00620010	C016 30D006 200 10	C	6 + PE	Gold	Blue	Solder	250V	8A	20	12.81	11.83	10.99
523-C01630D00620012	C016 30D006 200 12	C	6 + PE	Gold	Black	Solder	250V	8A	20	13.82	12.68	11.71
Female, Straight with Internal Strain Relief												
523-C01620D00311010	C016 20D003 110 10	C	3 + PE	Silver	Blue	Screw	400V	16A	14	7.89	7.24	6.69
523-C01620D00311012	C016 20D003 110 12	C	3 + PE	Silver	Black	Screw	400V	16A	14	7.89	7.24	6.69
523-C01620D00321010	C016 20D003 210 10	C	3 + PE	Gold	Blue	Screw	400V	12A	14	14.31	13.12	12.12
523-C01620D00321012	C016 20D003 210 12	C	3 + PE	Gold	Black	Screw	400V	12A	14	14.31	13.12	12.12
523-C01630D00611010	C016 30D006 110 10	C	6 + PE	Silver	Blue	Solder	250V	10A	20	10.47	9.60	8.87
523-C01630D00611012	C016 30D006 110 12	C	6 + PE	Silver	Black	Solder	250V	10A	20	10.47	9.60	8.87
523-C01630D00621010	C016 30D006 210 10	C	6 + PE	Gold	Blue	Solder	250V	8A	20	14.56	13.36	12.34
523-C01630D00621012	C016 30D006 210 12	C	6 + PE	Gold	Black	Solder	250V	8A	20	14.47	13.27	12.26
Female, Right Angle with Clamping Ring												
523-C01620F00310010	C016 20F003 100 10	D	3 + PE	Silver	Blue	Screw	400V	16A	14	14.47	13.27	12.26
523-C01620F00310012	C016 20F003 100 12	D	3 + PE	Silver	Black	Screw	400V	16A	14	14.47	13.27	12.26
523-C01630F00610010	C016 30F006 100 10	D	6 + PE	Silver	Blue	Solder	250V	10A	20	16.27	14.93	13.79
523-C01630F00610012	C016 30F006 100 12	D	6 + PE	Silver	Black	Solder	250V	10A	20	16.27	14.93	13.79

Panel Receptacles

For quantities of 100 and up, call for quote.

MOUSER STOCK NO.	Amphenol Part No.	Fig.	No. of Contacts	Plating	Color	Termination Type	Voltage	Current	AWG Size	Price Each		
										1	10	50
Male												
523-C01610C00600012	C016 10C006 000 12	E	6 + PE	Silver	Black	Crimp	250V	13A	14	2.59	2.38	2.20
523-C01620C00310012	C016 20C003 100 12	E	3 + PE	Silver	Black	Screw	400V	16A	14	5.80	5.32	4.92
523-C01630C00610012	C016 30C006 100 12	E	6 + PE	Silver	Black	Solder	250V	10A	20	7.19	6.60	6.09
Female												
523-C01620G00310012	C016 20G003 100 12	F	3 + PE	Silver	Black	Screw	400V	16A	14	6.50	5.97	5.51
523-C01630G00610012	C016 30G006 100 12	F	6 + PE	Silver	Black	Solder	250V	10A	20	8.05	7.39	6.82

Protective Caps

For quantities of 100 and up, call for quote.

MOUSER STOCK NO.	Amphenol Part No.	Description	Price Each		
			1	10	50
523-C01600U00001012	C016 00U000 010 12	Protective cover for male cable connector	5.03	4.61	4.26
523-C01600U0000012	C016 00U000 000 12	Protective cover for male receptacle	4.56	4.18	3.86
523-C01600V00001012	C016 00V000 010 12	Protective cover for female cable connector	4.38	4.02	3.71
523-C01600V0000012	C016 00V000 000 12	Protective cover for female receptacle	6.29	5.77	5.33