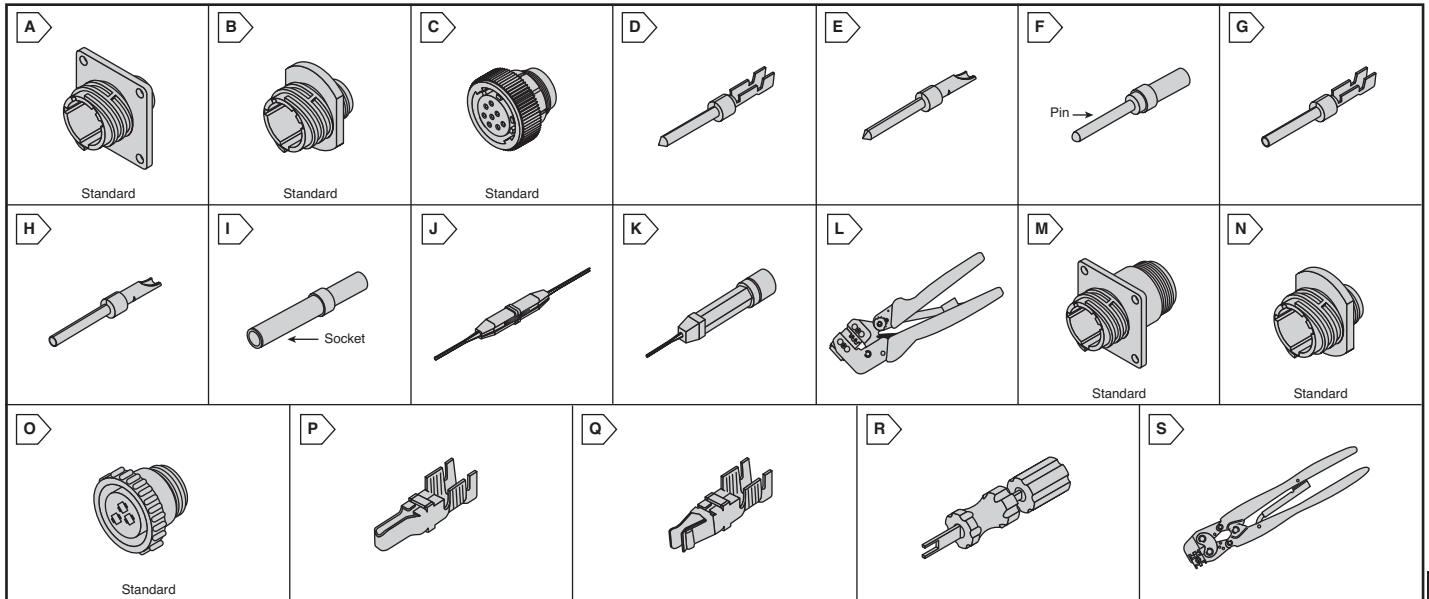


# AMP CPC Connectors (SERIES 2 AND 3)



## SERIES 2 (SIZE 20 CONTACTS) - HIGH DENSITY CONNECTORS

High density applications using size 20 DM (screw machined) and 20 DF (precision formed) contacts.

- \* STD. Genders= Pin contacts in receptacle housings, socket contacts in plug housings
- \* REV. Genders= Socket contacts in receptacle housings, pin contacts in plug housings
- Pins and sockets must be ordered separately.

**Features:**

- Housing Material: Black thermoplastic
- Flammability rating: UL94V-0
- RoHS compliant per Tyco Electronics documentation

RoHS Compliant

For quantities of 100 and up, call for quote.

MOUSER STOCK NO.	AMP Part No.	Fig.	Shell Size	No. of Contacts	Price Each		
					1	25	50
<b>Standard Sex Square Flange Receptacles-w/Mounting Holes</b>							
571-2058411	205841-1	A	11	8	4.14	3.80	3.42
571-2064861	206486-1	B	11	9	4.14	3.83	3.22
571-2058403	205840-3	A	17	28	4.71	4.31	3.80
571-2058431	205843-1	A	23	63	6.95	6.44	5.85
<b>Standard Sex Free-Hanging Receptacles (For Pin Contacts)</b>							
571-2058412	205841-2	B	11	8	4.10	3.81	3.39
571-2064862	206486-2	B	11	9	4.43	4.04	3.69
571-2061521	206152-1	B	17	28	5.41	4.97	4.60
571-2058432	205843-2	B	23	63	7.20	6.66	6.10
<b>Standard Sex Plugs (For Socket Contacts)</b>							
571-2058381	205838-1	C	11	8	5.21	4.82	4.21
571-2064851	206485-1	C	11	9	5.10	4.73	4.13
571-2058393	205839-3	C	17	28	5.54	5.13	4.48
571-2058421	205842-1	C	23	63	7.38	6.70	6.15
<b>Reverse Sex Square Flange Receptacles-w/Mounting Holes</b>							
571-2064331	206433-1	A	11	8	4.10	3.84	3.45
571-2060381	206038-1	A	17	28	4.45	4.08	3.79
571-2064381	206438-1	A	23	57	7.07	6.49	5.98
<b>Reverse Sex Free-Hanging Receptacles (For Socket Contacts)</b>							
571-2064332	206433-2	B	11	8	4.28	4.01	3.60
571-2060382	206038-2	B	17	28	5.45	5.05	4.90
571-2064382	206438-2	B	23	57	11.50	10.40	9.60
<b>Reverse Sex Plugs (For Pin Contacts)</b>							
571-2064341	206434-1	C	11	8	5.21	4.82	4.21
571-2060391	206039-1	C	17	28	5.55	5.20	4.68
571-2064371	206437-1	C	23	57	7.42	6.99	6.20

**Contacts**

- Plating:
  - Select gold flash over nickel
  - Gold flash over nickel
  - Gold flash over nickel w/ additional gold on mating end
  - Gold over copper
- RoHS Compliant per Tyco Electronics documentation

RoHS Compliant

For quantities of 5,000 and up, call for quote.

MOUSER STOCK NO.	AMP Part No.	Fig.	AWG	Plating	Type	Price Each		
						1	100	1000
<b>Pin Contacts</b>								
571-665079	66507-9	D	28-24	a	20 DF Crimp	.19	.17	.129
571-665069	66506-9	D	24-20	a	20 DF Crimp	.17	.15	.13
571-1665060	1-66506-0	D	24-20	b	20 DF Crimp	.21	.18	.15
571-665703	66570-3	E	18max	c	20 DF Solder	.30	.19	.17
571-2050891	205089-1	F	24-20	d	20 DM Crimp	.51	.40	.355
<b>Socket Contacts</b>								
571-665059	66505-9	G	28-24	a	20 DF Crimp	.21	.16	.132
571-665049	66504-9	G	24-20	a	20 DF Crimp	.20	.17	.15
571-1665040	1-66504-0	G	24-20	b	20 DF Crimp	.16	.15	.14
571-665693	66569-3	H	18max	c	20 DF Solder	.29	.20	.159
571-2050901	205090-1	I	24-20	d	20 DM Crimp	.85	.60	.41

**Tools**

For quantities of 5 and up, call for quote.

MOUSER STOCK NO.	AMP Part No.	Fig.	Description	Price Each
571-910672	91067-2	J	Insertion/extraction tool	5.54
571-912851	91285-1	K	Insertion/extraction tool	13.65
571-584482	58448-2	L	Pro-Crimper II Hand tool	201.43

## SERIES 3 (TYPE XII CONTACTS) - POWER DENSITY CONNECTORS

Power applications with Type XII contacts capable of carrying up to 25 amps of current.

**Features:**

- Housing Material: Black thermoplastic
- Flammability rating: UL94V-0
- Accommodates 16 to 10 AWG
- RoHS Compliant per Tyco Electronics documentation



E28476

LR7189

RoHS Compliant

For quantities of 100 and up, call for quote.

MOUSER STOCK NO.	AMP Part No.	Fig.	Shell Size	No. of Contacts	Price Each		
					1	25	50
<b>Standard Sex Square Flange Receptacles With Mounting Holes (For Pin Contacts)</b>							
571-2060362	206036-2	M	17	3	2.96	2.66	2.52
571-206137-1	206137-1	M	23	7	4.73	4.26	3.91
<b>Standard Sex Free-Hanging Receptacles (For Pin Contacts)</b>							
571-206207-1	206207-1	N	17	3	2.96	2.66	2.52
571-206137-2	206137-2	N	23	7	4.64	4.18	4.01
<b>Standard Sex Plugs (For Socket Contacts)</b>							
571-2060372	206037-2	O	17	3	3.88	3.49	3.30
571-2061361	206136-1	O	23	7	4.35	4.10	3.61
<b>Reverse Sex Square Flanges Receptacles-w/Mounting Holes (For Socket Contacts)</b>							
571-2064251	206425-1	M	17	3	2.96	2.66	2.52
571-2062271	206227-1	M	23	7	3.73	3.51	3.13
<b>Reverse Sex Free-Hanging Receptacles (For Socket Contacts)</b>							
571-2064252	206425-2	N	17	3	4.15	3.91	3.42
571-2062272	206227-2	N	23	7	3.88	3.66	3.17
<b>Reverse Sex Plugs (For Pin Contacts)</b>							
571-206426-1	206426-1	O	17	3	5.50	5.15	4.51
571-2062261	206226-1	O	23	7	4.55	4.18	3.62

## Type XII, Precision Formed, Crimp Power Contacts

For quantities of 5,000 and up, call for quote.

MOUSER STOCK NO.	AMP Part No.	Fig.	AWG	Finish	Contact Type	Price Each		
						1	100	1000
571-662592	66259-2	P	10-8	Gold	Pin	5.94	4.38	4.01
571-66259-5	66259-5	P	10	Tin	Pin	1.80	1.71	1.34
571-662612	66261-2	P	16, 14-12	Gold	Pin	10.00	6.28	5.75
571-66261-5	66261-5	P	16, 14-12	Tin	Pin	1.77	1.60	1.49
571-667416	66741-6	Q	10	Gold	Socket	9.04	7.11	6.28
571-2-66741-1	2-66741-1	Q	10	Tin	Socket	3.93	3.43	3.21
571-667406	66740-6	Q	16, 14-12	Gold	Socket	7.22	5.90	4.91
571-2-66740-1	2-66740-1	Q	16, 14-12	Tin	Socket	5.72	3.99	2.81

**Tools**

For quantities of 5 and up, call for quote.

MOUSER STOCK NO.	AMP Part No.	Fig.	Description	Price Each
571-910193	91019-3	R	Extraction tool	212.89
571-903822	90382-2	S	Certi-Crimp, 12-16 AWG, type XII	836.59
571-903841	90384-1	S	Certi-Crimp, 8-10 AWG, type XII	836.59