

# KYCON Ferrite Filtered D-Subminiature Connectors



## KF22 SERIES - RIGHT ANGLE, .318" FOOTPRINT

This product is RoHS compliant.

### Specifications:

- PCB Mount - .318" Footprint
- Grounding board locks
- Riveted threaded inserts
- Shell: Steel, Tin plated
- Insulator: PBT Thermoplastic with glass-fiber reinforcement, UL94V-0 rated
- Color: Black
- Contact Material: Plug: Brass; Socket: Phosphor Bronze
- Contact Plating: Gold flash on mating end with Nickel underplate on entire contact, Tin over Nickel on termination end
- Current Rating: 5A
- Voltage Rating: 300VDC
- Insulation Resistance: more than 1000MΩ
- Operating Temperature: -55°C to +105°C
- RoHS Compliance per Kycon Documentation

### Features:

- EMI/RFI noise suppression in data communication lines
- Cost effective way to meet FCC and VDE Class B requirements
- Does not require any more board space that a standard D-Sub

Ferrite filters provide an easy and efficient way of reducing both radiated and conducted interference. KYCON uses a medium permeability nickel zinc ferrite material that is effective at attenuating frequencies above 30 MHz.

Ferrite Specifications		
Test Frequency	Edge Hole	Inner Hole
30 MHz	17-27 Ohms	22-30 Ohms
50 MHz	22-30 Ohms	29-37 Ohms
100 MHz	29-34 Ohms	35-40 Ohms

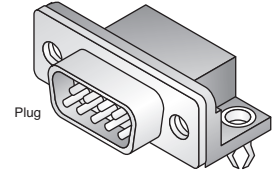


LR78160

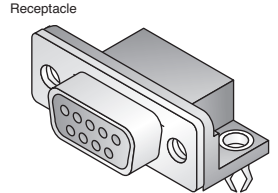
E140125



RoHS Compliant



Plug



Receptacle

**For quantities of 500 and up, call for quote.**

MOUSER STOCK NO.	Kycon Part No.	No. of Pos.	Type	Description	Price Each			
					1	25	50	100
806-KF22X-E9P-N	KF22X-E9P-N	9	Plug	Threaded Inserts	2.93	2.84	2.08	1.67
806-KF22X-E9P-NJ	KF22X-E9P-NJ	9	Plug	4-40 Hex. Jack Screws Installed	3.39	2.89	2.48	1.99
806-KF22X-E9S-N	KF22X-E9S-N	9	Receptacle	Threaded Inserts	3.12	3.11	2.27	1.76
806-KF22X-E9S-NJ	KF22X-E9S-NJ	9	Receptacle	4-40 Hex. Jack Screws Installed	3.40	2.90	2.48	2.00
806-KF22X-A15P-N	KF22X-A15P-N	15	Plug	Threaded Inserts	3.86	3.82	2.79	2.20
806-KF22X-A15P-NJ	KF22X-A15P-NJ	15	Plug	4-40 Hex. Jack Screws Installed	3.87	3.74	3.11	2.50
806-KF22X-A15S-N	KF22X-A15S-N	15	Receptacle	Threaded Inserts	2.89	2.56	2.30	2.08
806-KF22X-A15S-NJ	KF22X-A15S-NJ	15	Receptacle	4-40 Hex. Jack Screws Installed	4.26	3.63	3.12	2.51
806-KF22X-B25P-N	KF22X-B25P-N	25	Plug	Threaded Inserts	4.10	3.87	2.83	2.47
806-KF22X-B25P-NJ	KF22X-B25P-NJ	25	Plug	4-40 Hex. Jack Screws Installed	4.53	4.30	3.14	2.75
806-KF22X-B25S-N	KF22X-B25S-N	25	Receptacle	Threaded Inserts	3.27	2.89	2.59	2.35
806-KF22X-B25S-NJ	KF22X-B25S-NJ	25	Receptacle	4-40 Hex. Jack Screws Installed	3.63	3.21	2.88	2.61
806-KF22X-C37P-N	KF22X-C37P-N	37	Plug	Threaded Inserts	9.03	8.76	6.41	5.16
806-KF22X-C37P-NJ	KF22X-C37P-NJ	37	Plug	4-40 Hex. Jack Screws Installed	7.21	6.37	5.71	5.17
806-KF22X-C37P-HJ	KF22X-C37P-HJ	37	Plug	4-40 Hex. Jack Screws, Top GS	9.48	8.91	6.51	5.43

## KF66 SERIES - RIGHT ANGLE HIGH DENSITY, .350" FOOTPRINT

### Specifications:

- PCB Mount - .350" Footprint
- Grounding board locks
- Riveted threaded inserts
- Shell: Steel, Tin plated
- Insulator: PBT Thermoplastic with glass-fiber reinforcement, UL94V-0 rated
- Color: Black
- Contact Material: Plug: Brass; Socket: Phosphor Bronze
- Contact Plating: Gold flash on mating end with Nickel underplate on entire contact, Tin over Nickel on termination end
- Current Rating: 5A
- Voltage Rating: 300VDC
- Insulation Resistance: more than 1000MΩ
- Operating Temperature: -55°C to +105°C
- RoHS Compliance per Kycon Documentation

### Features:

- EMI/RFI noise suppression in data communication lines
- Cost effective way to meet FCC and VDE Class B requirements
- Does not require any more board space that a standard D-Sub

Ferrite filters provide an easy and efficient way of reducing both radiated and conducted interference. KYCON uses a medium permeability nickel zinc ferrite material that is effective at attenuating frequencies above 30 MHz.

Ferrite Specifications		
Test Frequency	Outer Row	Inner Row
30 MHz	20-23 Ohms	31-38 Ohms
50 MHz	24-27 Ohms	37-43 Ohms
100 MHz	29-31 Ohms	41-48 Ohms

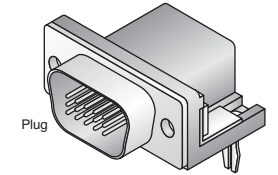


LR78160

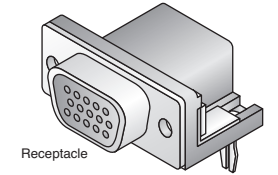
E140125



RoHS Compliant



Plug



Receptacle

**For quantities of 500 and up, call for quote.**

MOUSER STOCK NO.	Kycon Part No.	No. of Pos.	Type	Description	Price Each			
					1	25	50	100
806-KF66X-E15P-N	KF66X-E15P-N	15	Plug	Threaded Inserts	5.21	4.60	4.12	3.73
806-KF66X-E15P-NJ	KF66X-E15P-NJ	15	Plug	4-40 Hex. Jack Screws Installed	6.12	5.41	4.85	4.39
806-KF66X-E15S-N	KF66X-E15S-N	15	Receptacle	Threaded Inserts	3.58	3.16	2.83	2.56
806-KF66X-E15S-NJ	KF66X-E15S-NJ	15	Receptacle	4-40 Hex. Jack Screws Installed	5.06	4.91	3.59	2.89
806-KF66X-A26P-N	KF66X-A26P-N	26	Plug	Threaded Inserts	6.94	6.14	5.50	4.98
806-KF66X-A26P-NJ	KF66X-A26P-NJ	26	Plug	4-40 Hex. Jack Screws Installed	7.26	6.42	5.75	5.21
806-KF66X-A26S-N	KF66X-A26S-N	26	Receptacle	Threaded Inserts	9.47	8.37	7.51	6.80
806-KF66X-A26S-NJ	KF66X-A26S-NJ	26	Receptacle	4-40 Hex. Jack Screws Installed	9.90	8.74	7.83	7.09
806-KF66X-B44S-N	KF66X-B44S-N	44	Receptacle	Threaded Inserts	16.68	15.86	11.60	9.81
806-KF66X-B44S-NJ	KF66X-B44S-NJ	44	Receptacle	4-40 Hex. Jack Screws Installed	13.34	11.78	10.56	9.56

## KF66 VESA SERIES - RIGHT ANGLE HIGH DENSITY, .350" FOOTPRINT

### Specifications:

- PCB Mount - .350" Footprint
- Grounding board locks
- Riveted threaded inserts
- Shell: Steel, Tin plated
- Insulator: PBT Thermoplastic with glass-fiber reinforcement, UL94V-0 rated
- Color: Blue
- Contact Material: Plug: Brass; Socket: Phosphor Bronze
- Contact Plating: Gold flash on mating end with Nickel underplate on entire contact, Tin over Nickel on termination end
- Current Rating: 5A
- Voltage Rating: 300VDC
- Insulation Resistance: more than 1000MΩ
- Operating Temperature: -55°C to +105°C
- RoHS Compliance per Kycon Documentation

### Features:

- Pin# 9 recessed 0.050" for last mate/first break on 5V supply voltage
- EMI/RFI noise suppression in data communication lines
- Cost effective way to meet FCC and VDE Class B requirements
- Does not require any more board space than a standard D-Sub

Ferrite filters provide an easy and efficient way of reducing both radiated and conducted interference. KYCON uses a medium permeability nickel zinc ferrite material that is effective at attenuating frequencies above 30 MHz.

Ferrite Specifications		
Test Frequency	Outer Row	Inner Row
30 MHz	20-23 Ohms	31-38 Ohms
50 MHz	24-27 Ohms	37-43 Ohms
100 MHz	29-31 Ohms	41-48 Ohms

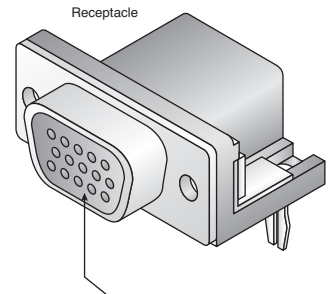


LR78160

E140125



RoHS Compliant



Receptacle

Blue color signifies 5V capability and full feature AccessBus capability.

**For quantities of 500 and up, call for quote.**

MOUSER STOCK NO.	Kycon Part No.	No. of Pos.	Type	Description	Price Each			
					1	25	50	100
806-KF66X-E15S-NVESA	KF66X-E15S-N-VESA	15	Receptacle	Threaded Inserts	4.67	4.13	3.69	3.34
806-KF66X-E15SNJVESA	KF66X-E15S-NJ-VESA	15	Receptacle	4-40 Hex. Jack Screws Installed	6.25	5.95	4.36	3.85