

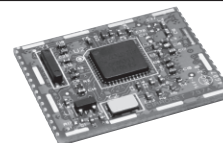
# RFM 802.15.4, FHSS, Mesh Networking and 802.11



RFM offers a complete line of spread spectrum wireless products for industrial and factory applications. Using both patented frequency hopping technology and open-standard direct sequence technologies, these products fall in two categories: ready-to-use devices for systems integration, and design-in OEM modules for custom applications.

## 802.15.4 PRODUCTS

RFM's LPR2430 Series of 802.15.4 2.4GHz modules is comprised of the low-power LPR2430/LPR2430A and the extended range LPR2430ER/LPR2430ERA. The RFM LPR2430 Series modules are easy to integrate and provide robust wireless communications in applications where meshing is not needed or desired.

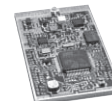


LPR2430 Shown

| MOUSER STOCK NO.        | RFM Part No. | Description  | Transmit Power | Channels | Data Rate | Price Each |       |
|-------------------------|--------------|--|----------------|----------|-----------|------------|-------|
|                         |              |  |                |          |           | 1          | 100   |
| 725-LPR2430             | LPR2430      | 2.4 GHz Transceiver Module, Low-Power                              | 1 mW           | 16       | 250 kbps  | 22.53      | 22.16 |
| 725-LPR2430A            | LPR2430A     | 2.4 GHz Transceiver Module, Low-Power, with Chip Antenna           | 1 mW           | 16       | 250 kbps  | 23.18      | 22.79 |
| 725-LPR2430ER           | LPR2430ER    | 2.4 GHz Transceiver Module, Extended Range                         | 10-100mW       | 15       | 250 kbps  | 36.00      | 33.75 |
| 725-LPR2430ERA          | LPR2430ERA   | 2.4 GHz Transceiver Module, Extended Range, with Chip Antenna      | 10-100mW       | 15       | 250 kbps  | 37.50      | 35.50 |
| <b>Development Kits</b> |              |  |                |          |           |            |       |
| 725-LPR2430DK           | LPR2430DK    | 2.4 GHz 802.15.4 Development Kit for LPR2430 Transceiver Module    | 1 mW           | 16       | 250 kbps  | 299.00     | -     |
| 725-LPR2430ADK          | LPR2430ADK   | 2.4 GHz 802.15.4 Development Kit for LPR2430A Transceiver Module   | 1 mW           | 16       | 250 kbps  | 299.00     | -     |
| 725-LPR2430ERDK         | LPR2430ERDK  | 2.4 GHz 802.15.4 Development Kit for LPR2430ER Transceiver Module  | 10-100mW       | 15       | 250 kbps  | 299.00     | -     |
| 725-LPR2430ERADK        | LPR2430ERADK | 2.4 GHz 802.15.4 Development Kit for LPR2430ERA Transceiver Module | 10-100mW       | 15       | 250 kbps  | 299.00     | -     |

## FREQUENCY HOPPING SPREAD SPECTRUM PRODUCTS

RFM FHSS transceiver modules are based on RFM proprietary technology to ensure secure, error-free delivery of data that is desirable in industrial and factory environments.

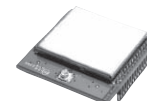


DNT2400P

| MOUSER STOCK NO.        | RFM Part No. | Description   | Transmit Power | Channels | Data Rate     | Price Each |        |
|-------------------------|--------------|---|----------------|----------|---------------|------------|--------|
|                         |              |   |                |          |               | 1          | 500    |
| 725-DNT900P             | DNT900P      | 900MHz Transceiver Module with I/O                  | 1mW to 1W      | 50       | 500kbps       | 69.00      | 67.13  |
| 725-DNT2400P            | DNT2400P     | 2.4GHz Transceiver Module with I/O                  | 100 mW         | 50       | 38.4-500 kbps | 69.00      | 67.13  |
| 725-WIT2450             | WIT2450M2    | 2.4GHz Transceiver OEM Module                       | 40/100/250mW   | 95       | 460.8kbps     | 125.00     | 120.00 |
| 725-WIT2410             | WIT2410M4G   | 2.4GHz Transceiver OEM Module w/ Roaming Capability | 10/100mW       | 75       | 460.8kbps     | 259.00     | 254.00 |
| 725-WIT2410S4G          | WIT2410S4G   | 2.4GHz Transceiver OEM Module                       | 10/100mW       | 75       | 460.8Kbps     | 259.00     | 246.38 |
| 725-WIT2411D            | WIT2411D     | 2.4GHz Transceiver OEM Module                       | 10/100mW       | 43       | 1.23Mbps      | 425.00     | 416.08 |
| <b>Development Kits</b> |              |   |                |          |               |            |        |
| 725-DNT900DK            | DNT900DK     | DNT900 Developer Kit                                | 1mW to 1W      | 50       | 500kbps       | 337.34     | -      |
| 725-DNT2400DK           | DNT2400DK    | DNT2400 Development Kit                             | 100 mW         | 50       | 38.4-500 kbps | 359.00     | -      |
| 725-WIT910DK            | WIT910DK     | WIT910 Development Kit                              | 10/100mW/1W    | 54       | 172.8kbps     | 795.00     | -      |
| 725-WIT2450DK           | WIT2450DK    | WIT2450 Development Kit                             | 40/100/250mW   | 95       | 460.8Kbps     | 495.00     | -      |
| 719-WIT2410DK           | WIT2410DK    | WIT2410 Development Kit                             | 10/100mW       | 75       | 460.8Kbps     | 795.00     | -      |
| 725-WIT2410SDK          | WIT2410SDK   | WIT2410 Developer Kit w/SNAP2410                    | 10/100mW       | 75       | 460.8Kbps     | 1795.00    | -      |
| 719-WIT2411DK           | WIT2411DK    | WIT2411 Developer Kit                               | 10/100mW       | 43       | 1.23Mbps      | 995.00     | -      |
| 725-WIT2411SDK          | WIT2411SDK   | WIT2411 Developer Kit w/SNAP2411                    | 10/100mW       | 43       | 1.23Mbps      | 1995.00    | -      |

## WIRELESS MESH NETWORKING PRODUCTS

The 2.4GHz SmartMesh-XD Module is RFM's newest addition to their Wireless Mesh Networking products. The XDM2140 modules are based on DUST Networks' SmartMesh-XD™ technology and are designed to provide excellent communications reliability and long battery life in a wide range of sensor network applications.



XDM2140

| MOUSER STOCK NO.                       | RFM Part No.   | Description                             | Transmit Power | Channels | Data Rate | Price Each |        |
|--|----------------|---|----------------|----------|-----------|------------|--------|
|  |                |   |                |          |           | 1          | 50     |
| <b>SmartMesh-XD Module</b>             |                |   |                |          |           |            |        |
| 725-XDM2140P                           | XDM2140P       | 2.4GHz Ultra Low Power RF Transceiver   | 10mW           | 15       | 250Kbps   | 109.00     | 107.49 |
| <b>Proprietary Mesh OEM RF Modules</b> |                |   |                |          |           |            |        |
| 725-DM1800-434MB                       | DM1800-434MB   | 434MHz DM1800 Base Station              | 1mW            | 1        | 4800bps   | 30.00      | 28.33  |
| 725-DM1800-434MN                       | DM1800-434MN   | 434MHz DM1800 Field Node                | 1mW            | 1        | 4800bps   | 30.00      | 28.33  |
| 725-DM1800-434MN-V                     | DM1800-434MN-V | 434MHz DM1800 Field Node Vertical Mount | 1mW            | 1        | 4800bps   | 30.00      | 28.33  |
| 725-DM1800-434MR                       | DM1800-434MR   | 434MHz DM1800 Router                    | 1mW            | 1        | 4800bps   | 30.00      | 28.33  |
| 725-DM1800-434MR-V                     | DM1800-434MR-V | 434MHz DM1800 Router Vertical Mount     | 1mW            | 1        | 4800bps   | 30.00      | 28.33  |
| 725-DM1810-434MB                       | DM1810-434MB   | 434MHz DM1810 Base Station              | 10mW           | 1        | 4800bps   | 35.00      | 33.00  |
| 725-DM1810-434MN                       | DM1810-434MN   | 434MHz DM1810 Field Node                | 10mW           | 1        | 4800bps   | 35.00      | 33.00  |
| 725-DM1810-434MN-V                     | DM1810-434MN-V | 434MHz DM1810 Field Node Vertical Mount | 10mW           | 1        | 4800bps   | 35.00      | 33.34  |
| 725-DM1810-434MR                       | DM1810-434MR   | 434MHz DM1810 Router                    | 10mW           | 1        | 4800bps   | 35.00      | 33.00  |
| 725-DM1810-434MR-V                     | DM1810-434MR-V | 434MHz DM1810 Router Vertical Mount     | 10mW           | 1        | 4800bps   | 35.00      | 33.34  |
| 725-DM2200-434VM                       | DM2200-434VM   | 434MHz DM2200 Module                    | 10mW           | 1        | 9600bps   | 60.00      | 55.43  |
| 725-DM1800-916MB                       | DM1800-916MB   | 916MHz DM1800 Base Station              | 1mW            | 1        | 4800bps   | 30.00      | 28.33  |
| 725-DM1800-916MN                       | DM1800-916MN   | 916MHz DM1800 Field Node                | 1mW            | 1        | 4800bps   | 30.00      | 28.33  |
| 725-DM1800-916MN-V                     | DM1800-916MN-V | 916MHz DM1800 Field Node Vertical Mount | 1mW            | 1        | 4800bps   | 30.00      | 28.33  |
| 725-DM1800-916MR                       | DM1800-916MR   | 916MHz DM1800 Router                    | 1mW            | 1        | 4800bps   | 30.00      | 28.33  |
| 725-DM1800-916MR-V                     | DM1800-916MR-V | 916MHz DM1800 Router Vertical Mount     | 1mW            | 1        | 4800bps   | 30.00      | 28.33  |
| 725-DM1810-916MN-V                     | DM1810-916MN-V | 916MHz DM1810 Field Node Vertical Mount | 10mW           | 1        | 4800bps   | 35.00      | 33.34  |
| 725-DM1810-916MR-V                     | DM1810-916MR-V | 916MHz DM1810 Router Vertical Mount     | 10mW           | 1        | 4800bps   | 35.00      | 33.34  |
| <b>Development Kits and Gateways</b>   |                |   |                |          |           |            |        |
| 725-XG2400E                            | XG2400E        | 2.4GHz Gateway with Network Manager     | 10mW           | 15       | 250Kbps   | 1067.80    | --     |
| 725-XDM2140DK                          | XDM2140DK      | 2.4GHz Mesh RF Module Development Kit   | 10mW           | 15       | 250Kbps   | 2995.00    | --     |
| 719-DM1810-434-DK                      | DM1810-434-DK  | 434MHz DM1810 Development Kit           | 10mW           | 1        | 4800bps   | 495.00     | --     |
| 719-DM1810-434-QK                      | DM1810-434-QK  | 434MHz DM1810 Quick Development Kit     | 10mW           | 1        | 4800bps   | 199.00     | --     |
| 719-DM2200-434-DK                      | DM2200-434-DK  | 434MHz DM2200 Development Kit           | 10mW           | 1        | 9600bps   | 495.00     | --     |
| 725-DM1810-916-DK                      | DM1810-916-DK  | 916MHz DM1810 Development Kit           | 10mW           | 1        | 4800bps   | 495.00     | --     |
| 719-DM1810-916-QK                      | DM1810-916-QK  | 916MHz DM1810 Quick Development Kit     | 10mW           | 1        | 4800bps   | 199.00     | --     |
| 725-DM2200-916-DK                      | DM2200-916-DK  | 916MHz DM2200 Development Kit           | 10mW           | 1        | 9600bps   | 495.00     | --     |

## 802.11 PRODUCTS

RFM's WSN802G is a 2.4GHz IEEE 802.11 g Radio Transceiver Module that enables OEMs to build low-power wireless local area networking (WLAN) and sensor monitoring solutions for the global market. The WSN802G delivers an exceptionally low power profile and long battery life capabilities in a fully functional, certified radio module that is easily interfaced to existing 802.11. b/g infrastructure for a wide variety of sensor monitoring and WLAN applications.



WSN802G

| MOUSER STOCK NO.        | RFM Part No. | Description                             | Transmit Power | Channels | Data Rate  | Price Each |       |
|-------------------------|--------------|---|----------------|----------|------------|------------|-------|
|                         |              |   |                |          |            | 1          | 100   |
| 725-WSN802GP            | WSN802GP     | 2.4GHz 802.11g Radio Transceiver Module | 10mW           | 14       | 1 or 2Mbps | 69.00      | 68.08 |
| <b>Development Kits</b> |              |   |                |          |            |            |       |
| 725-WSN802GDK           | WSN802GDK    | 2.4GHz 802.11g Development Kit          | 10mW           | 14       | 1 or 2Mbps | 139.00     | --    |
| 725-WSN802GDK-A         | WSN802GDK-A  | 2.4GHz 802.11g Development Kit w/Router | 10mW           | 14       | 1 or 2Mbps | 199.00     | --    |