

QUALTEK EMI Power Line Filters

Qualtek ELECTRONICS CORPORATION

P Primary Power Components Div.
 FCI EMI Power Line Filters

862 SERIES MULTI-FUNCTION MODULE FILTERS

A multi-function power entry module filter that incorporates an IEC connector, a fuse holder with optional power on/off switch, and voltage selector switch.

- With IEC Connector
- With Fuse Holder



For quantities of 50 and up, call for quote.

MOUSER STOCK NO.	Qualtek Part No.	Fig.	Electrical Schematic Fig.	Amp Rating 115-250	Dimensions: in.			Power Switch	Voltage Selector	Price Each		
					L	W	H			1	10	25
562-862-06/1	862-06/001	A	1	6	2.17	1.15	2.65	No	No	13.25	12.59	11.96
562-862-06/2	862-06/002	A	1	6	2.17	1.15	2.65	SP	No	16.25	14.80	13.50
562-862-06/3	862-06/003	A	2	6-4	2.17	1.15	2.65	DP	No	18.21	16.50	15.10
562-862-06/7	862-06/007	A	3	6	2.17	1.15	2.65	No	Yes	20.00	18.15	16.65

864 SERIES MULTI-FUNCTION MODULE FILTERS

Effectively suppress EMI noise, both line-to-ground (common mode) and line-to-line (differential mode) for general applications. Compact design provides significant savings in space and cost compared with individual components.

Note: 5 x 20mm Fuse sold separately

Specifications:

- Maximum leakage current each line-to-ground @ 115VAC 60Hz: .25mA @ 250VAC 50Hz: .45mA
- Rated voltage: 115/250/VAC
- Hipot rating (one minute) line-to-ground: 2250VDC; line-to-line: 1450VDC
- Operating frequency: 50-60Hz



For quantities of 100 and up, call for quote.

MOUSER STOCK NO.	Qualtek Part No.	Fig.	Electrical Schematic Fig.	Inductance	Rated Current @ 250VAC	Dimensions: in.			Price Each		
						L	W	H	1	25	50
562-864-03/1	864-03/001	B	4	8.0mH	3A	3.51	1.12	2.58	24.93	23.37	22.59
562-864-03/3	864-03/003	B	4	8.0mH	3A	3.51	1.12	2.58	24.93	23.37	22.59
562-864-06/5	864-06/005	B	4	2.5mH	6A	3.51	1.12	2.58	24.93	23.37	22.59
562-864-06/7	864-06/007	B	4	2.5mH	6A	3.51	1.12	2.58	24.93	23.37	22.59
562-864-10/9	864-10/009	B	4	1.6mH	10A	3.51	1.12	2.58	24.93	23.37	22.59
562-864-10/11	864-10/011	B	4	1.6mH	10A	3.51	1.12	2.58	24.93	23.37	22.59

880 SERIES MULTI-FUNCTION MODULE FILTERS

A multi-function power entry module filter that incorporates an IEC connector, double pole power switch, voltage selector switch, and optional single or double fuse holder (5 x 20) offering space savings.

- With IEC Connector
- Voltage Selector: No
- Power Switch: DP (UL/CSA 125/250 VAC 10A VDE 250VAC 4A)



For quantities of 50 and up, call for quote.

MOUSER STOCK NO.	Qualtek Part No.	Fig.	Electrical Schematic Fig.	Amp Rating 115-250	Dimensions: in.			Fuse Holder	Price Each		
					L	W	H		1	10	25
562-880-01/1	880-01/001	C	5	1	2.46	1.13	2.59	Double	21.25	20.18	19.18
562-880-01/4	880-01/004	C	6	1	2.46	1.13	2.59	Single	18.84	17.89	17.00
562-880-03/2	880-03/002	C	5	3	2.46	1.13	2.59	Double	18.84	17.89	17.00
562-880-03/5	880-03/005	C	6	3	2.46	1.13	2.59	Single	18.84	17.89	17.00
562-880-06/3	880-06/003	C	5	6	2.46	1.13	2.59	Double	19.27	18.30	17.38
562-880-06/6	880-06/006	C	6	6	2.46	1.13	2.59	Single	19.27	18.30	17.38

882 SERIES COMPACT SNAP-IN MULTI-FUNCTION MODULE FILTERS

- With IEC Connector
- Power Switch: DP
- Voltage Selector: Yes



For quantities of 50 and up, call for quote.

MOUSER STOCK NO.	Qualtek Part No.	Fig.	Electrical Schematic Fig.	Amp Rating 115-250	Dimensions: in.			Fuse Holder	Price Each		
					L	W	H		1	10	25
562-882-03/1	882-03/001	D	7	3/3	2.17	1.26	2.28	Double	22.10	20.85	20.00
562-882-03/3	882-03/003	D	7	3/3	2.17	1.26	2.28	Single	22.10	20.85	20.00
562-882-06/11	882-06/011	D	7	6/6	2.17	1.26	2.28	Double	22.10	20.85	20.00
562-882-06/13	882-06/013	D	7	6/6	2.17	1.26	2.28	Single	22.10	20.85	20.00
562-882-10/16	882-10/016	D	7	10/6	2.17	1.26	2.28	Double	22.10	20.85	20.00
562-882-10/18	882-10/018	D	7	10/6	2.17	1.26	2.28	Single	22.10	20.85	20.00

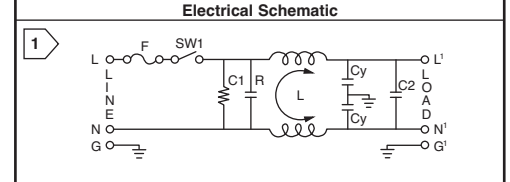
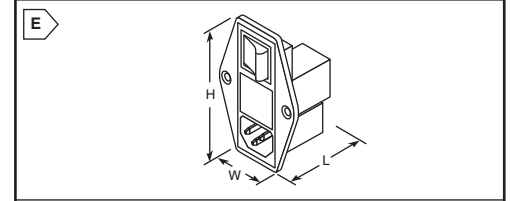
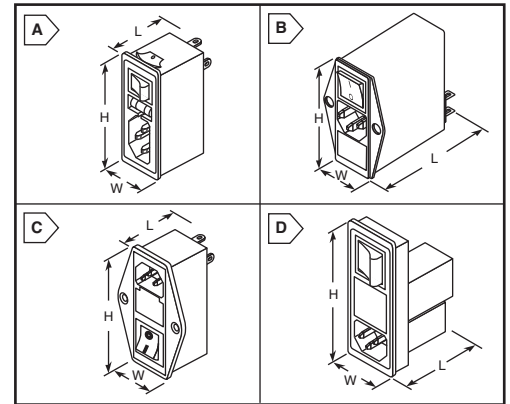
883 SERIES COMPACT SCREW MOUNT MULTI-FUNCTION MODULE FILTERS

- With IEC Connector
- Power Switch: DP
- Voltage Selector: Yes

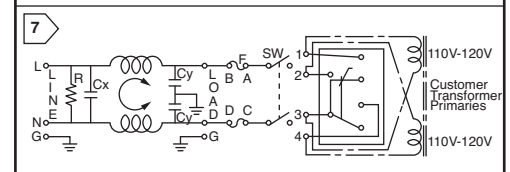
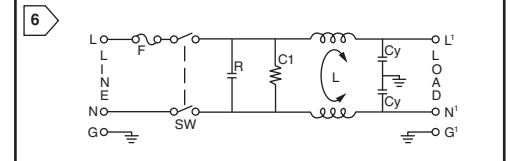
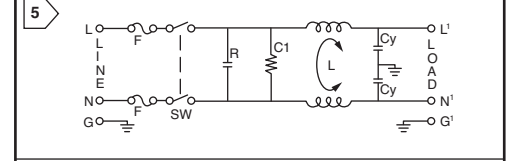
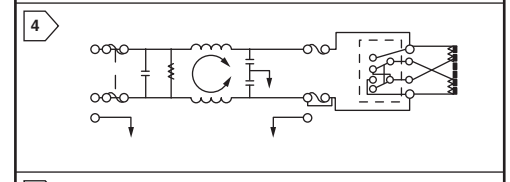
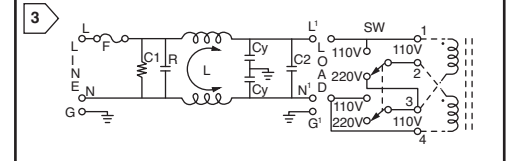
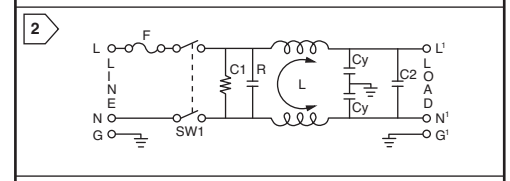
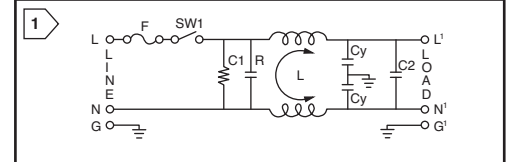


For quantities of 50 and up, call for quote.

MOUSER STOCK NO.	Qualtek Part No.	Fig.	Electrical Schematic Fig.	Amp Rating	Dimensions: in.			Fuse Holder	Price Each		
					L	W	H		1	10	25
562-883-03/1	883-03/001	E	7	3/3	2.17	1.10	2.28	Double	22.00	20.90	19.86
562-883-03/3	883-03/003	E	7	3/3	2.17	1.10	2.28	Single	22.00	20.90	19.86
562-883-06/11	883-06/011	E	7	6/6	2.17	1.10	2.28	Double	22.00	20.90	19.86
562-883-06/13	883-06/013	E	7	6/6	2.17	1.10	2.28	Single	22.00	20.90	19.86
562-883-10/16	883-10/016	E	7	10/6	2.17	1.10	2.28	Double	23.75	22.35	21.50
562-883-10/18	883-10/018	E	7	10/6	2.17	1.10	2.28	Single	23.75	22.35	21.50



Electrical Schematic



AC Power Connectors Qualtek