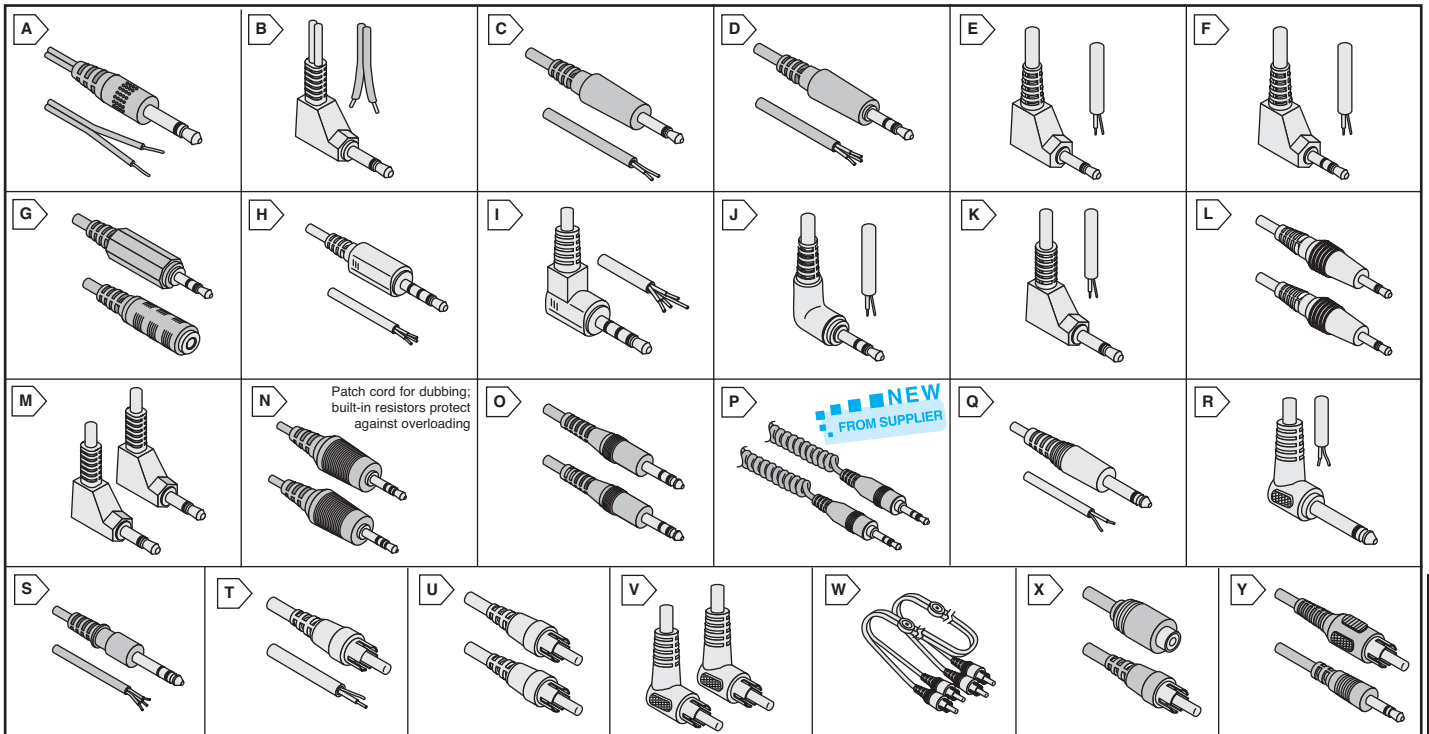


KOBICONN Cable Assemblies and Adapters



PHONE TYPE CABLES

For quantities of 500 and up, call for quote.

MOUSER STOCK NO.	Fig.	Meters	Color	Termination	Termination	Price Each		
						1	10	100
2.5mm Connector, Parallel Cable								
172-2133	A	.914	Black	Mono plug	Stripped & tinned	1.94	1.49	1.35
172-2103	A	1.82	Black	Mono plug	Stripped & tinned	2.60	2.00	1.82
172-2113	A	3.05	Black	Mono plug	Stripped & tinned	3.11	2.39	2.17
172-2003	B	1.82	Gray	Mono, 90° plug	Stripped & tinned	2.89	2.22	2.02
2.5mm Connector, Shielded Cable								
172-2104	C	1.82	Black	Mono plug	Stripped & tinned	3.16	2.43	2.21
172-2114	C	3.05	Black	Mono plug	Stripped & tinned	3.80	2.92	2.65
172-2134	C	.914	Black	Mono plug	Stripped & tinned	2.26	1.74	1.58
172-0120	C	1.82	Gray	Mono plug	Stripped & tinned	4.46	3.43	3.12
172-2234	D	.914	Black	Stereo plug	Stripped & tinned	3.59	2.76	2.51
172-2204	D	1.82	Black	Stereo plug	Stripped & tinned	4.58	3.52	3.20
172-2214	D	3.05	Black	Stereo plug	Stripped & tinned	6.01	4.62	4.20
172-2304	D	1.82	Gray	Stereo plug	Stripped & tinned	4.20	3.23	2.94
172-2004	E	1.82	Gray	Mono, 90° plug	Stripped & tinned	3.15	2.42	2.20
172-2009	E	.914	Black	Mono, 90° plug	Stripped & tinned	2.42	1.86	1.69
172-2069	E	1.82	Black	Mono, 90° plug	Stripped & tinned	3.26	2.51	2.28
172-2019	E	3.05	Black	Mono, 90° plug	Stripped & tinned	4.46	3.43	3.12
172-2310	F	.914	Black	Stereo, 90° plug	Stripped & tinned	3.71	2.85	2.59
172-2010	F	1.82	Black	Stereo, 90° plug	Stripped & tinned	4.73	3.64	3.31
172-2110	F	3.05	Black	Stereo, 90° plug	Stripped & tinned	5.49	4.22	3.84
172-2533	G	.914	Black	Stereo plug	Stereo Jack	4.73	3.64	3.31
172-2574	G	1.82	Black	Stereo plug	Stereo Jack	5.90	4.54	4.13
172-2535	G	3.05	Black	Stereo plug	Stereo Jack	7.23	5.56	5.05
172-7425	H	1.82	Black	4 Cond Stereo plug	Stripped & tinned	5.62	4.32	3.93
172-7446-E	I	1.82	Black	4 Cond Stereo 90°	Stripped & tinned	4.62	3.08	2.80
172-MC254-EX	J	1.82	Black	4 Cond 90° deg plug, use w/161-2828-E only	Stripped & tinned	13.83	10.64	9.67

For quantities of 500 and up, call for quote.

MOUSER STOCK NO.	Fig.	Meters	Color	Termination	Termination	Price Each		
						1	10	100
3.5mm Connector, Shielded Cable (Cont.)								
172-0106	L	1.82	Gray	Mono plug	Mono plug	4.13	3.18	2.89
172-2007	M	1.52	Gray	Mono, 90° plug	Mono, 90° plug	3.47	2.67	2.43
172-2008	M	1.82	Gray	Mono, 90° plug	Mono, 90° plug	3.81	2.93	2.66
172-3534	N	.914	Black	Stereo plug	Stereo plug	6.15	4.73	4.30
172-3504	N	1.82	Black	Stereo plug	Stereo plug	7.18	5.52	5.02
172-3514	N	3.05	Black	Stereo plug	Stereo plug	8.58	6.60	6.00
172-3533	G	.914	Black	Stereo plug	Stereo jack	4.13	3.18	2.89
172-3574	G	1.82	Black	Stereo plug	Stereo jack	5.24	4.03	3.66
172-3535	G	3.05	Black	Stereo plug	Stereo jack	6.60	5.08	4.62
172-8362-E	O	.914	Black	Stereo plug	Stereo plug	3.50	2.33	2.12
172-8361-E	O	1.82	Black	Stereo plug	Stereo plug	3.98	3.33	3.03
172-8363-E	O	3.05	Black	Stereo plug	Stereo plug	5.19	3.99	3.63
172-JT01-EX	P	1.54	Black	3.5mm	3.5mm	10.04	8.34	7.58
172-7435	H	1.82	Black	4 Cond Stereo plug	Stripped & tinned	5.24	4.03	3.66
172-7447-E	I	1.82	Black	4 Cond Stereo 90°	Stripped & tinned	4.55	3.03	2.75
1/4" Connector, Shielded Cable								
172-0110	Q	1.82	Gray	Mono plug	Stripped & tinned	3.81	2.93	2.66
172-3101	Q	1.82	Black	Mono plug	Stripped & tinned	3.15	2.42	2.20
172-3001	R	1.82	Gray	Mono, 90° plug	Stripped & tinned	3.45	2.65	2.41
172-0001	O	1.82	Black	Stereo plug	Stereo plug	5.19	3.99	3.63
1/4" Connector, Unshielded Cable								
172-0108	S	1.82	Black	Stereo plug	Stripped & tinned	4.97	3.82	3.47

RCA PHONO TYPE CABLES / ADAPTERS

Shielded Cable

For quantities of 500 and up, call for quote.

MOUSER STOCK NO.	Fig.	Meters	Color	Termination	Termination	Price Each		
						1	10	100
172-1133	T	.914	Black	RCA plug	Stripped & tinned	2.16	1.66	1.51
172-1103	T	1.82	Black	RCA plug	Stripped & tinned	3.03	2.33	2.12
172-1113	T	3.05	Black	RCA plug	Stripped & tinned	4.19	3.22	2.93
17FH101	U	.914	Gray	RCA plug	RCA plug	2.76	2.12	1.93
17FH105	U	1.52	Gray	RCA plug	RCA plug	3.09	2.38	2.16
172-1011	U	3.05	Gray	RCA plug	RCA plug	4.46	3.43	3.12
172-1101	U	.914	Black	RCA plug	RCA plug	2.48	1.91	1.74
172-1166	U	1.82	Black	RCA plug	RCA plug	3.30	2.54	2.31
172-1112	U	1.82	Gray	RCA plug	RCA plug	3.63	2.79	2.54
172-1001	V	.914	Gray	Rt. angle RCA plug	Rt. angle RCA plug	2.65	2.04	1.85
172-1002	V	1.52	Gray	Rt. angle RCA plug	Rt. angle RCA plug	3.30	2.54	2.31
172-1110	V	3.05	Gray	Rt. angle RCA plug	Rt. angle RCA plug	4.85	3.73	3.39
172-0043	W	.914	Black	1red/1blk RCA plug	1red/1blk RCA plug	4.57	3.81	3.46
172-0004	W	1.82	Black	1red/1blk RCA plug	1red/1blk RCA plug	5.42	4.17	3.79
172-0041	W	3.05	Black	1red/1blk RCA plug	1red/1blk RCA plug	7.17	5.52	5.01
172-0023	X	.914	Black	RCA plug	RCA jack	2.48	1.91	1.74
172-0020	X	1.82	Black	RCA plug	RCA jack	3.30	2.54	2.31
172-0021	X	3.05	Black	RCA plug	RCA jack	4.10	3.15	2.86
172-0002	Y	1.82	Black	RCA plug	3.5mm mono plug	2.59	1.99	1.81
172-0012	Y	.914	Black	RCA plug	3.5mm mono plug	2.40	1.85	1.68
172-0013	Y	3.05	Black	RCA plug	3.5mm mono plug	3.86	2.97	2.70

