

# CW INDUSTRIES Rocker Switches



## STYLELINE™ ROCKER SWITCHES

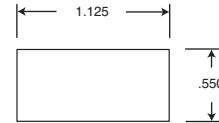
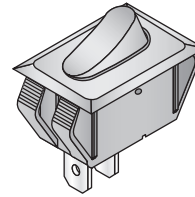
- Specifications:**
- Ratings: 16A @ 125VAC
  - Terminals: .250" QC

- Features:**
- Ideal for use in appliances, test equipment, security systems, etc.
  - Attractively styled

\* SPDT-CO = SPDT-Center Off

For quantities of 1000 and up, call for quote.

MOUSER STOCK NO.	CW Industries Part Number	Circuit	Type	Rocker Color	Price Each			
					1	10	100	500
<b>Matte Finish</b>								
629-GRS20112400	GRS-2011-2400	SPST	On-Off	Black	1.31	1.15	.87	.58
629-GRS20112401	GRS-2011-2401	SPST	On-Off	White	1.37	1.23	.92	.61
629-GRS20122400	GRS-2012-2400	SPDT	On-Off	Black	1.48	1.30	.99	.88
629-GRS20122401	GRS-2012-2401	SPDT	On-Off	White	1.55	1.36	1.03	.70
629-GRS2013A2400	GRS-2013A-2400	SPDT-CO*	On-Off-On	Black	1.91	1.68	1.28	.87
629-GRS2013A2401	GRS-2013A-2401	SPDT-CO*	On-Off-On	White	1.98	1.74	1.32	.90
<b>Gloss Finish</b>								
629-GRS20112500	GRS-2011-2500	SPST	On-Off	Black	1.31	1.15	.87	.58
629-GRS20112501	GRS-2011-2501	SPST	On-Off	White	1.37	1.23	.92	.61
629-GRS20122503	GRS-2012-2503	SPDT	On-Off	Black	1.48	1.30	.99	.87
629-GRS20122504	GRS-2012-2504	SPDT	On-Off	White	1.55	1.36	1.03	.70
629-GRS2013A2500	GRS-2013A-2500	SPDT-CO*	On-Off-On	Black	1.91	1.68	1.28	.87
629-GRS2013A2501	GRS-2013A-2501	SPDT-CO*	On-Off-On	White	1.98	1.74	1.32	.90



DIMENSIONS (IN.)

## STANDARD ROCKER SWITCHES

**Specifications:**

- Contact resistance: < .01Ω @ 10mA
- Operating temperature: 105°C max.
- Dielectric withstand voltage: 2,500V, 60Hz for 1 minute
- Housing and knob material: nylon
- Terminal and contact material: copper
- Terminals: .250" QC

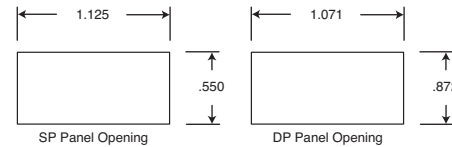
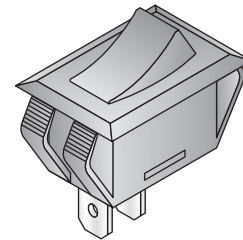
- Illuminated style has 120VAC neon bulb
- Markings are hot stamped

**Features:**

- Crisp detent action
- Self cleaning contacts
- High current switching
- All 16A and non-illuminated have UL, CSA, and VDE approvals
- All 13A and illuminated have UL, CSA approvals

For quantities of 1000 and up, call for quote.

MOUSER STOCK NO.	CW Industries Part Number	Circuit	Type	Rating Current	Rocker Color	Marking	Price Each			
							1	10	100	500
629-GRL20111600	GRL-2011-1600	SPST-NO	On-Off	16A	Red illum.	None	1.97	1.77	1.43	1.05
629-GRS20112019	GRS-2011-2019	SPST-NO	On-Off	16A	Red	None	1.10	.98	.70	.49
629-GRS20112080	GRS-2011-2080	SPST-NO	On-Off	16A	Black	Vertical I/O	1.20	1.05	.82	.55
629-GRS20113000	GRS-2011-3000	SPST-NO	On-Off	16A	Black	None	1.10	.98	.70	.49
629-GRS2011C2000	GRS-2011C-2000	SPST-NC	On-Mom	13A	Black	None	1.20	1.02	.82	.55
629-GRS20112126	GRS-2011-2600	SPST	On-Off	16A	Black	None	.61	.55	.50	.47
629-GRS2011B2	GRS-2011B-2000	SPST-NO	Off-Mom	13A	Black	None	.76	.70	.59	.55
629-GRS201226	GRS-2012-2600	SPDT	On-Off	16A	Black	None	.97	.88	.76	.70
629-GRS20122028	GRS-2012-2028	SPDT	On-On	16A	Black	Vertical I/O	1.35	1.22	.90	.62
629-GRS20123000	GRS-2012-3000	SPDT	On-On	16A	Black	None	1.15	1.05	.80	.54
629-GRS2013A26	GRS-2013A-2600	SPDT	On-Off-On	16A	Black	None	.97	.88	.76	.70
629-GRS2013C13	GRS-2013C-1300	SPDT	(On)-Off-On	13A	Black	None	1.01	.92	.78	.72
629-GR2020007	GR-2022-0007	DPDT	On-On	16A	Black	None	3.02	2.70	2.01	1.37
629-GR20221600	GR-2022-1600	DPDT	On-On	16A	Black	Vertical I/O	2.85	2.55	1.92	1.29



DIMENSIONS (IN.)

## MINIATURE ROCKER SWITCHES

**Specifications:**

- Contact resistance: < .01Ω @ 10mA
- Operating temperature: 105°C max.
- Dielectric withstand voltage: 2,500V, 60Hz for 1 min.
- Housing and knob material: nylon
- Terminal and contact material: copper
- Terminals: .187" QC, except GRS-4011-0024 which has solder eyelet terminals

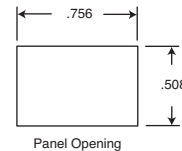
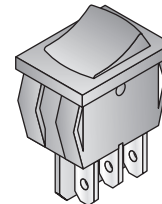
- Illuminated style has 120VAC neon bulb
- Markings are hot stamped

**Features:**

- Crisp detent action
- Self cleaning contacts
- High current switching
- All 16A and non-illuminated have UL, CSA, and VDE approvals
- All 13A and illuminated have UL, CSA approvals

For quantities of 1000 and up, call for quote.

MOUSER STOCK NO.	CW Industries Part Number	Circuit	Type	Rating Current	Rocker Color	Marking	Price Each			
							1	10	100	500
629-GRS401116	GRS-4011-1600	SPST	On-Off	16A	Black	None	.72	.65	.61	.56
629-GRS401140	GRS-4011-0040	SPST	On-Off	16A	Red	None	.72	.65	.61	.56
629-GRS40110024	GRS-4011-0024	SPST	On-Off	16A	Black	None	1.20	1.05	.80	.69
629-GRL40111600	GRL-4011-1600	SPST	On-Off	16A	Red Illum.	None	2.35	2.10	1.55	1.22
629-GRS40110068	GRS-4011-0068	SPST	On-Off	16A	Black	Horiz I/O	1.11	1.00	.78	.60
629-GRS401176	GRS-4011-0076	SPST	On-Off	16A	Black	Vert I/O	.89	.81	.69	.64
629-GRS4011B13	GRS-4011B-1300	SPST	Off-Mom	13A	Black	None	.89	.81	.69	.64
629-GRS40120047	GRS-4012-0047	SPDT	On-On	16A	Black	Vert I/O	1.19	1.07	.85	.64
629-GRS4013A0008	GRS-4013A-0008	SPDT	On-Off-On	13A	Red	None	1.33	1.19	.95	.71
629-GRS401216	GRS-4012-1600	SPDT	On-On	16A	Black	None	.83	.75	.64	.59
629-GRS401226	GRS-4012-0026	SPDT	On-On	16A	Red	None	.83	.75	.64	.59
629-GRS4013A13	GRS-4013A-1300	SPDT	On-Off-On	13A	Black	None	1.04	.95	.80	.74
629-GRS4013C01	GRS-4013C-0001	SPDT	(On)-Off-(On)	13A	Black	None	1.04	.95	.80	.74
629-GRS4021B	GRS-4021B-0000	DPST	Off-(On)	13A	Black	None	1.24	1.13	.96	.89
629-GRS4023A0009	GRS-4023A-0009	DPDT	On-Off-On	13A	Red	None	2.10	1.84	1.40	.95
629-GRS4023C0005	GRS-4023C-0005	DPDT	(On)-Off-(On)	13A	Red	None	2.10	1.84	1.40	.95
629-GRS402216	GRS-4022-1600	DPDT	On-On	16A	Black	None	1.21	1.11	.94	.87
629-GRS402210	GRS-4022-0010	DPDT	On-On	16A	Red	None	1.21	1.11	.94	.87
629-GRS402213	GRS-4022-0013	DPDT	On-On	16A	Black	Vert I/O	1.30	1.18	1.00	.93
629-GRS4023A13	GRS-4023A-1300	DPDT	On-Off-On	13A	Black	None	1.39	1.27	1.07	.99
629-GRS4023C13	GRS-4023C-1300	DPDT	(On)-Off-(On)	13A	Black	None	1.41	1.28	1.08	1.00



DIMENSIONS (IN.)

## INDICON™ ROCKER SWITCHES

**Specifications:**

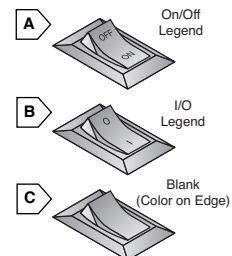
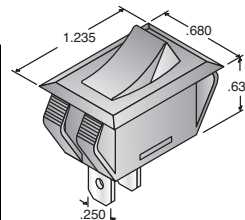
- Ratings: 16A @ 125VAC; 12A @ 250VAC
- Housing and knob material: nylon
- Terminal and contact material: copper

**Features:**

- Two-color knob provides positive indication of switch position
- Economical alternative to expensive lighted switches

For quantities greater than listed, call for quote.

MOUSER STOCK NO.	CW Industries Part Number	Fig.	Circuit	Indicator Color	Panel Openings	Price Each			
						1	10	100	500
629-AA111B11	NAA-111-B111-00	A	SPST	Red	1.125 x .550	.67	.62	.52	.49
629-AA211B11	NAA-211-B111-00	A	SPST	Red	1.072 x .480	.67	.62	.52	.49
629-AA211B21	NAA-211-B121-00	B	SPST	Red	1.072 x .480	.67	.62	.52	.49
629-AA111B21	NAA-111-B121-00	B	SPST	Red	1.125 x .550	.67	.62	.52	.49
629-AA111B31	NAA-111-B131-00	C	SPST	Red	1.125 x .550	.62	.56	.51	.48
629-AA211B31	NAA-211-B131-00	C	SPST	Red	1.072 x .480	.62	.56	.51	.48
629-BA111B31	NBA-111-B131-00	C	SPDT	Red	1.125 x .550	.83	.75	.64	.59
629-BA211B31	NBA-211-B131-00	C	SPDT	Red	1.072 x .480	.83	.75	.64	.59



DIMENSIONS (IN.)

